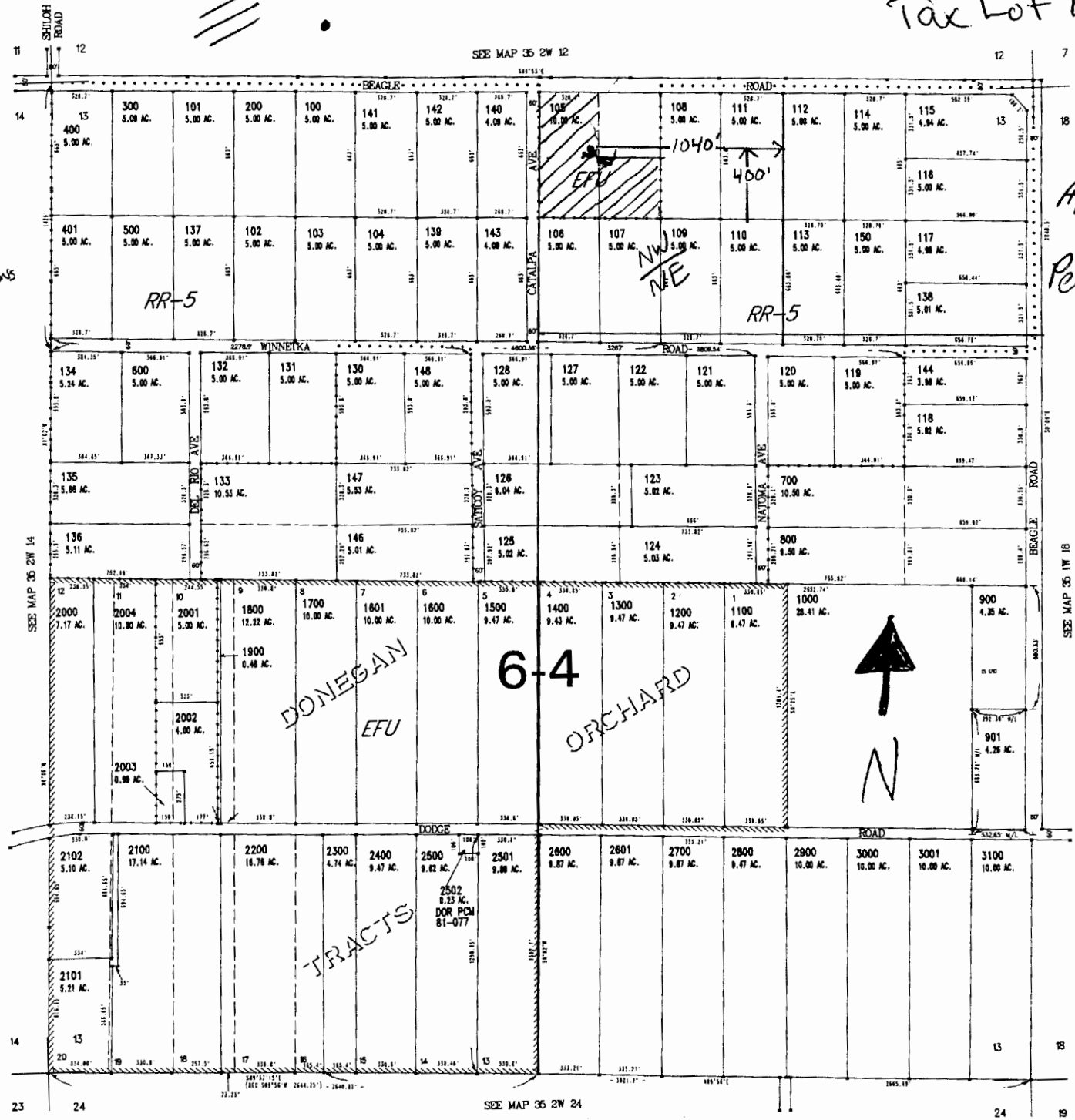


7 AC WELL

1" = 800'

352W13  
Tax Lot 105

Lot 111 - 663' LONG  
167' x 80' WIDE, SO  
WELL = 303' SOUTH  
1040' WEST  
FROM E 1/16 COR  
BETWEEN SECTIONS  
12+13



CANCELLED NO.  
App #  
6-15943  
Permit #

RECEIVED  
MAR 07 2003  
WATER RESOURCES DEPT.  
SALEM, OREGON