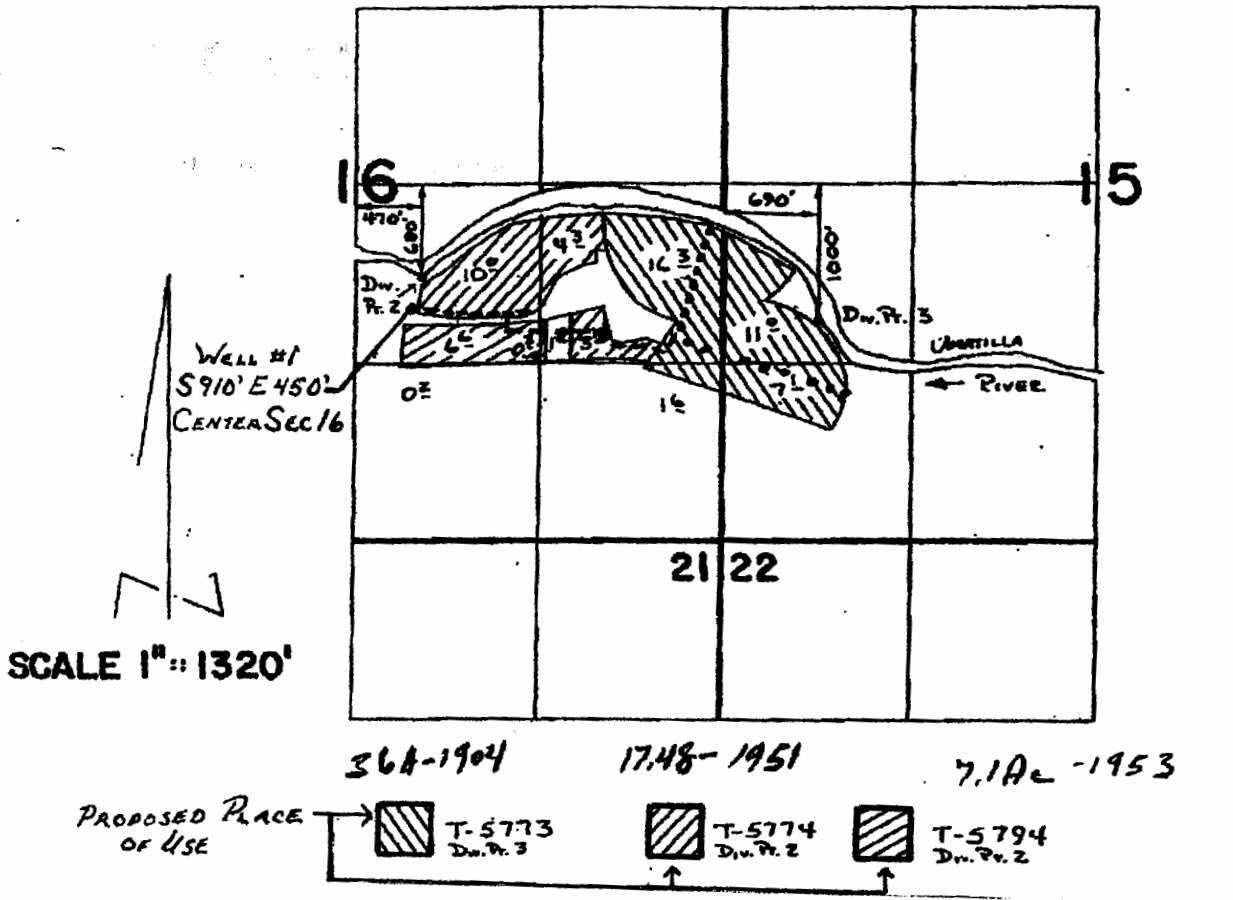


T. 2N., R. 31E., W.M.

RECEIVED
APR 08 2004
WATER RESOURCES DEPT
SALEM, OREGON



PROPOSED PLACE OF USE →

	T-5773 Div. P. 3		T-5774 Div. P. 2		T-5794 Div. P. 2
--	---------------------	--	---------------------	--	---------------------

8" MAINLINE - - - - -

TOTAL ACREAGE 60.58

6" MAINLINE

MAP T2N, R 31E, W.M.

SECTION 15
NW 1/4, SW 1/4
SW 1/4, SW 1/4

ALL IN TAX LOT 3400

SECTION 16
SE 1/4

Application No. G-16225
Permit No.