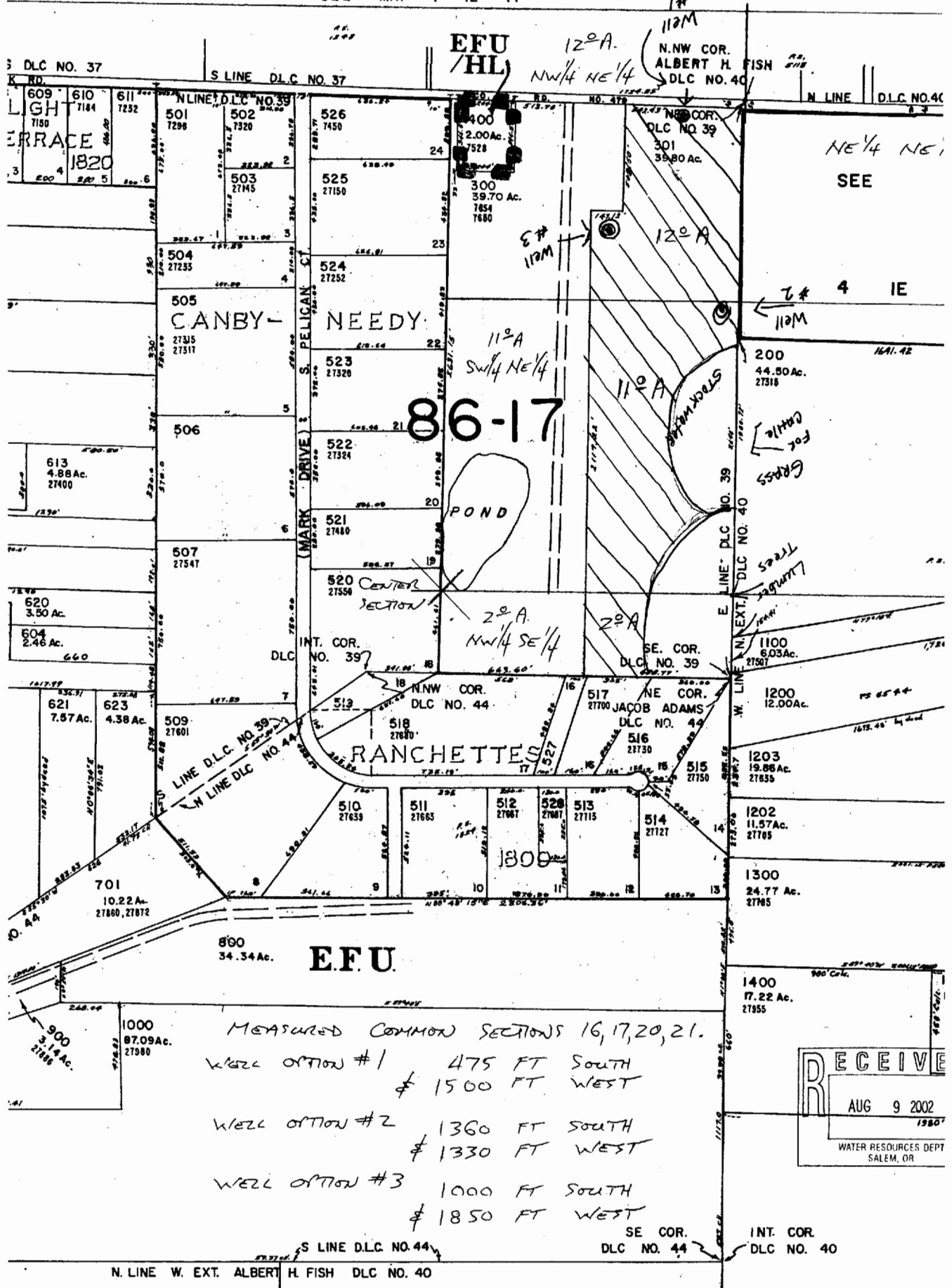


This map was prepared for
assessment purpose only.

1" = 400'

7500

SEE MAP 4 IE 17



MEASURED COMMON SECTIONS 16, 17, 20, 21.
 WELL OPTION #1 475 FT SOUTH
 & 1500 FT WEST
 WELL OPTION #2 1360 FT SOUTH
 & 1330 FT WEST
 WELL OPTION #3 1000 FT SOUTH
 & 1850 FT WEST

RECEIVED
 AUG 9 2002
 19807
 WATER RESOURCES DEPT
 SALEM, OR

N. LINE W. EXT. ALBERT H. FISH D.L.C. NO. 40

SE COR. D.L.C. NO. 44 INT. COR. D.L.C. NO. 40