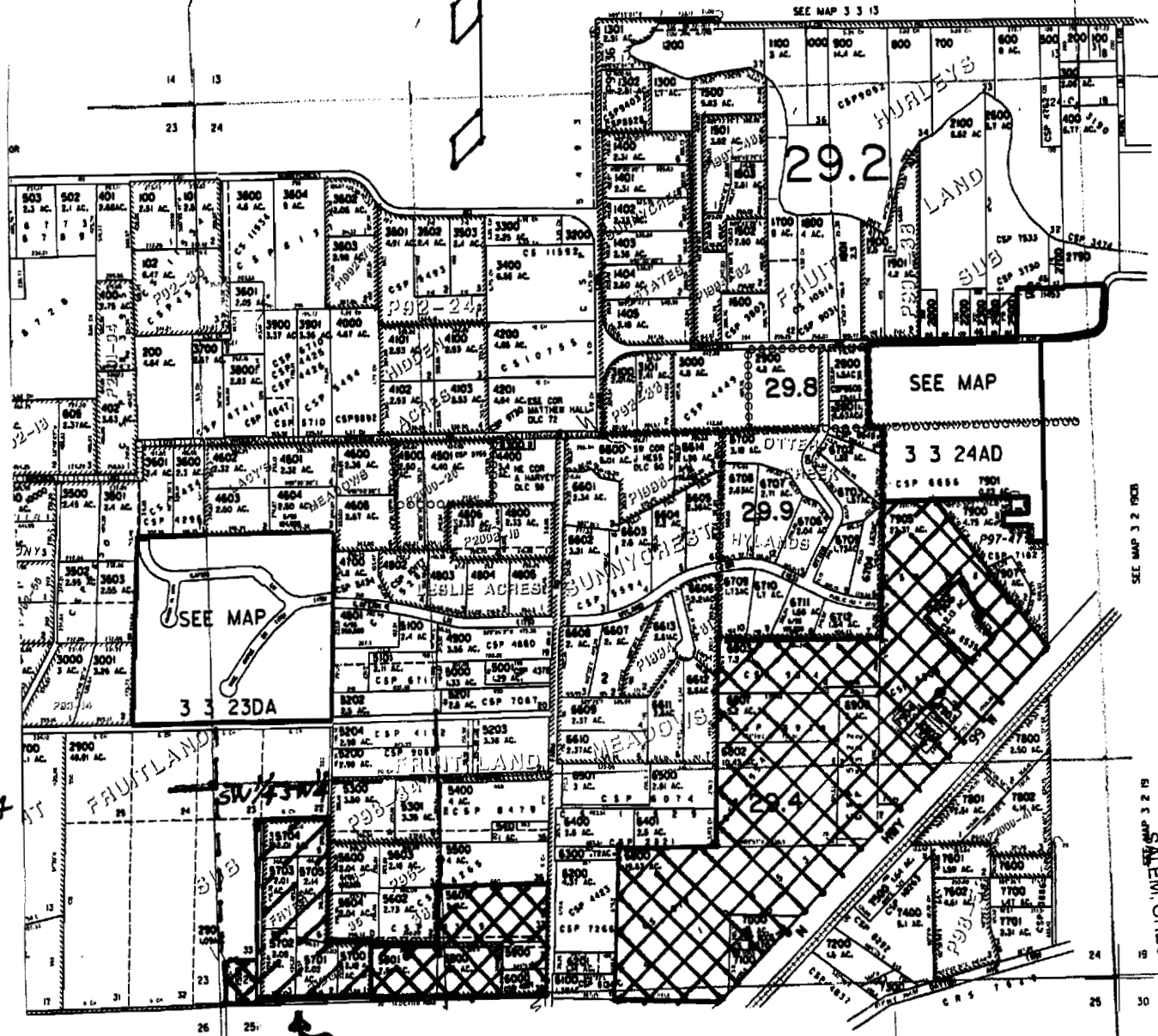


SECTION 24 T3S R3W W.M.
YAMHILL COUNTY
1" = 400'

THIS MAP WAS PREPARED FOR
ASSESSMENT PURPOSE ONLY

CANCELLED



P.O.U. Revised
as of March 13, 2004

Scale: 1" = 1000'



Area to be included in proposed POU
(Tax lots 5700, -01, -02, -03, -04, & -05)
(All in SW 1/4 SW 1/4 Sec 24)



Area to be deleted
from proposed POU

See original POU map
for well locations

WATER RESOURCES DEPT
1123 S.W. ALLEM, OREGON
MAR 15 2004

RECEIVED

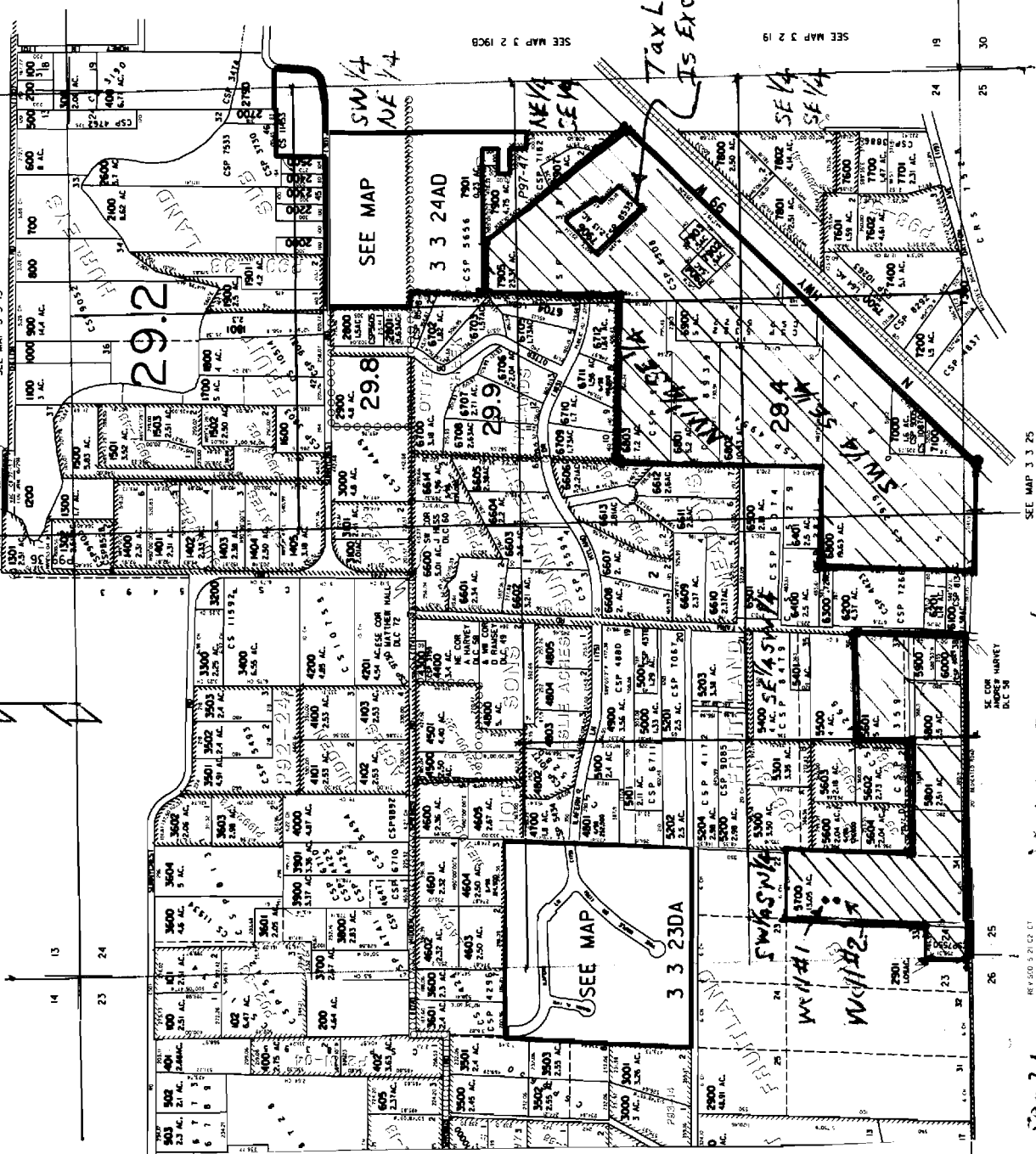
3 3 24

SECTION 24 T3S R3W W.M.
YAMHILL COUNTY

1" = 400'

THIS MAP WAS PREPARED FOR
ASSESSMENT PURPOSE ONLY

CANCELLED
1401



SEE MAP 3 3 13

SEE MAP 3 2 19

SEE MAP 2 19CB

SEE MAP 3 2 19

SEE MAP 3 3 25

REV 5/20/03 BY GJ

Notes: I've checked in rec 24
Yamhill County record. Tax Lot 2901
IN SECTION 23.

Notes: Map is Prepared F.O.U.
Scale: 1" = 1000'

SUPERSEDED
USE FOR WELL
REFERENCE
ONLY

APP NO G-116067

Well #1 = 350ft East
and 24' =
North -
SW Cor Sec 25
Well #2 = 350ft East
and 825ft
North of
SW Cor Sec 25

3 3 24