

WATER RESOURCES DEPT
SALEM OREGON
FEB 05 2004

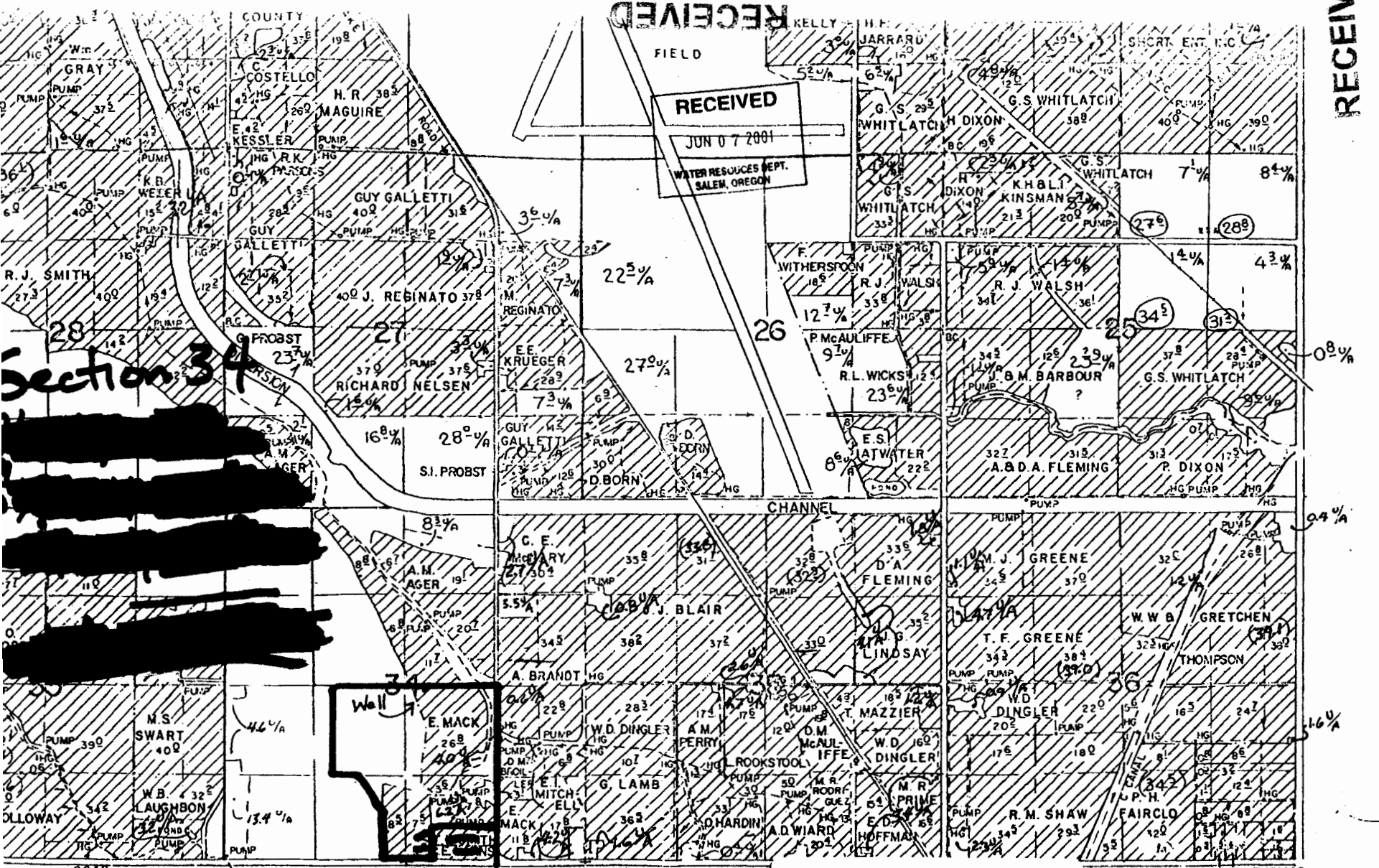
RECEIVED

RECEIVED
JUN 07 2001
WATER RESOURCES DEPT.
SALEM, OREGON

RECEIVED

FEB 17 2004

WATER RESOURCES DEPT
SALEM, OREGON



Section 34



Well 7
E. MACK
26 1/4
40 1/4

(34.5) Indicates corrected acreage for the area
34.5 u/a Indicates unirrigated acreage under contract

J.M. KING S.L. THOMAS
T39S R9E 79
39S 9E

97 301 0157 E 1/4 Corner Section 34
54.2 ACRES (E. MACK) T 39 S R 9 E, W 1/4

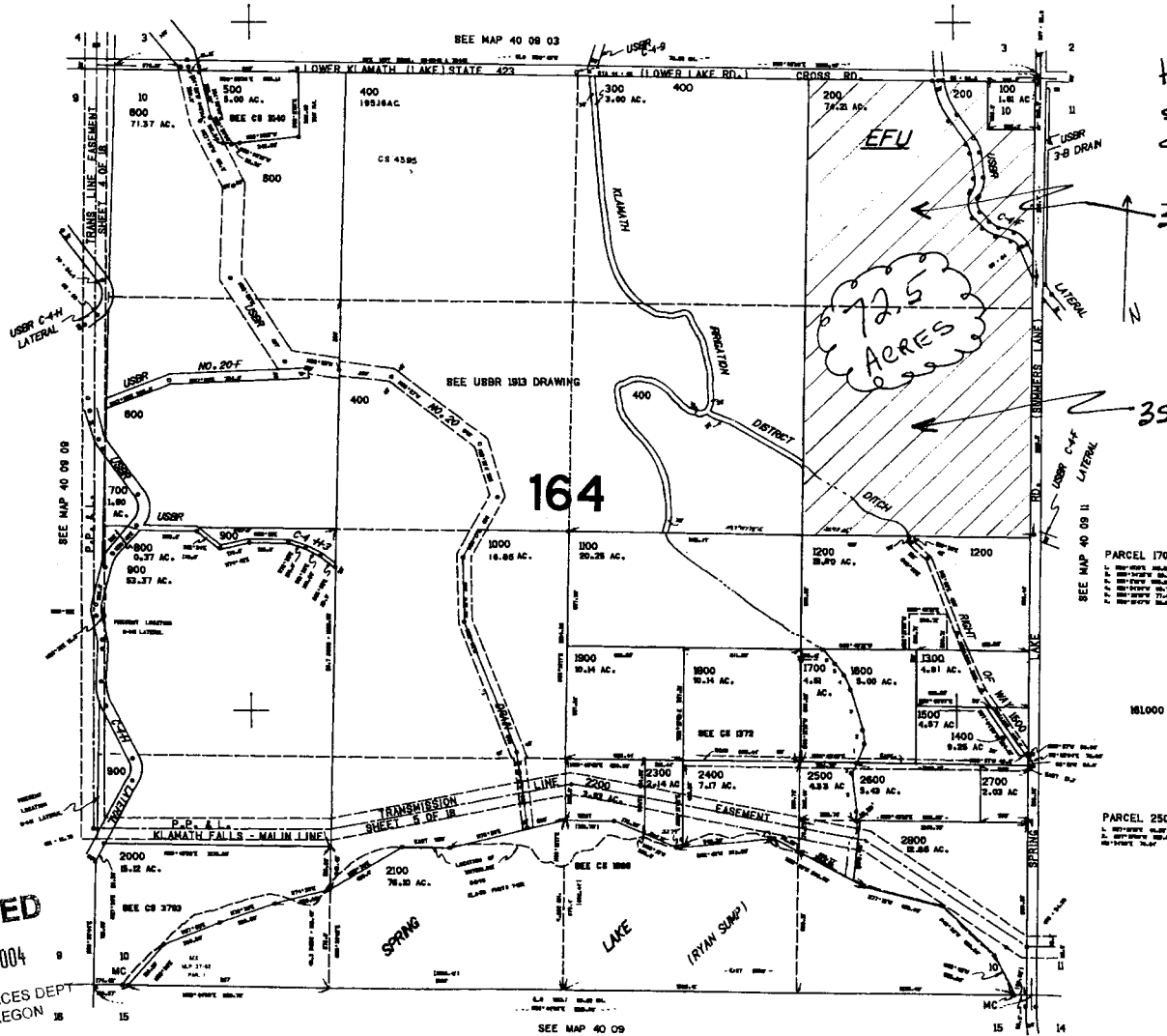
app no. G-16189

THIS MAP WAS PREPARED FOR
ASSESSMENT PURPOSE ONLY

SECTION 10 T.40S. R.09E. W.M.
KLAMATH COUNTY

40 09 10

1"=400'



Irrigated Acres = 72.5 @
the E 1/2 of the NE 1/4 in
section 10, TS 40 south, Range
9 East of Willamette Meridian.

37 Acres

35.5 Acres

RECEIVED

FEB 17 2004
WATER RESOURCES DEPT
SALEM, OREGON

RECEIVED

FEB 05 2004
WATER RESOURCES DEPT
SALEM, OREGON

40 09 10

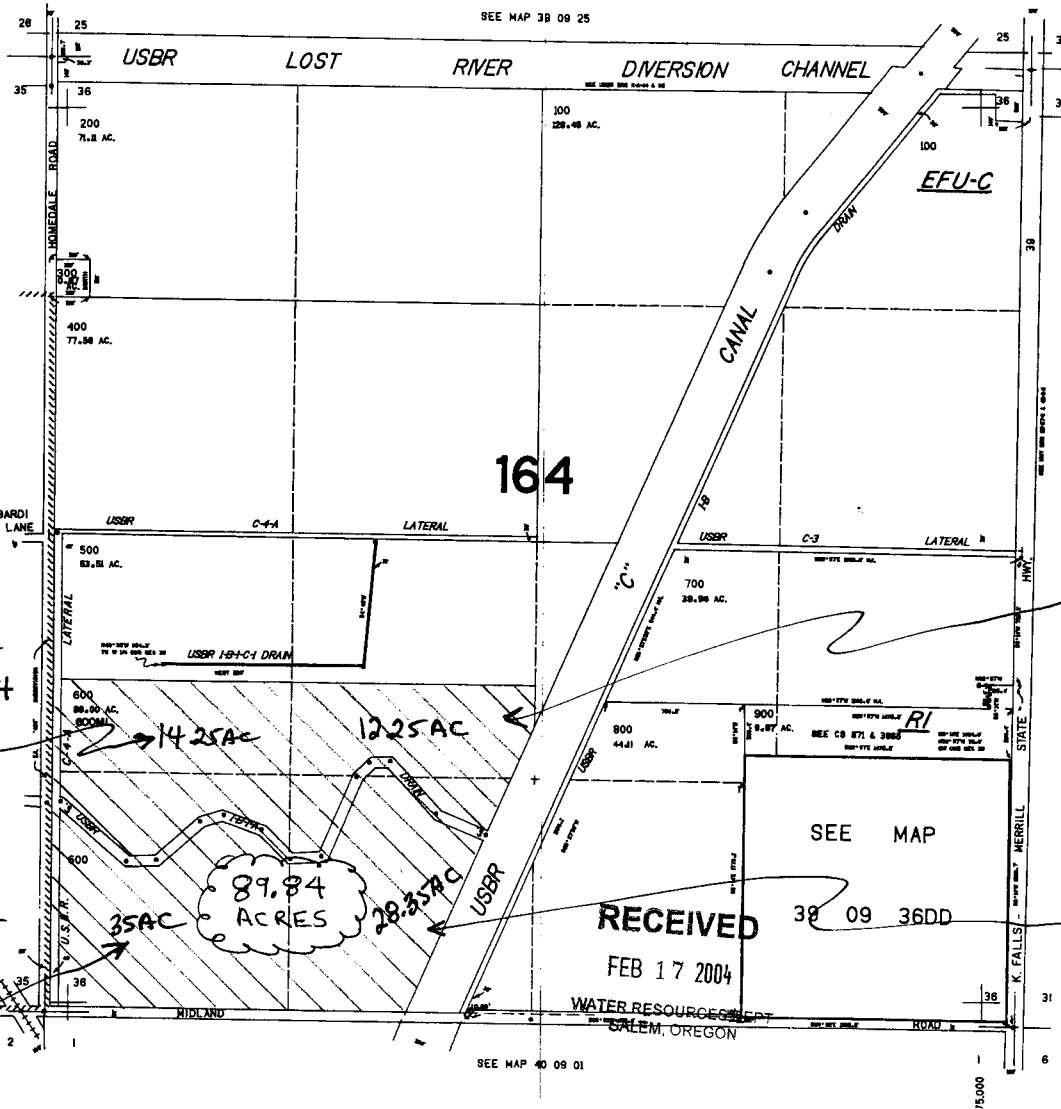
app no. G-16189

THIS MAP WAS PREPARED FOR ASSESSMENT PURPOSE ONLY.

SECTION 36, T.39S, R.09E, W.M.
KLAMATH COUNTY

39 09 36
& INDEX

1"=400'



S26, T39S, R9E
POR S2NW4SW4
14.25 AC

S36, T39S, R9E
SW4SW4
35 AC

S36, T39S, R9E
POR S2NE4SW4
12.25 AC

S36, T39S, R9E
POR SE4SW4
28.35 AC

RECEIVED
FEB 17 2004
WATER RESOURCES DEPT
SALEM, OREGON

RECEIVED
FEB 05 2004
WATER RESOURCES DEPT
SALEM, OREGON

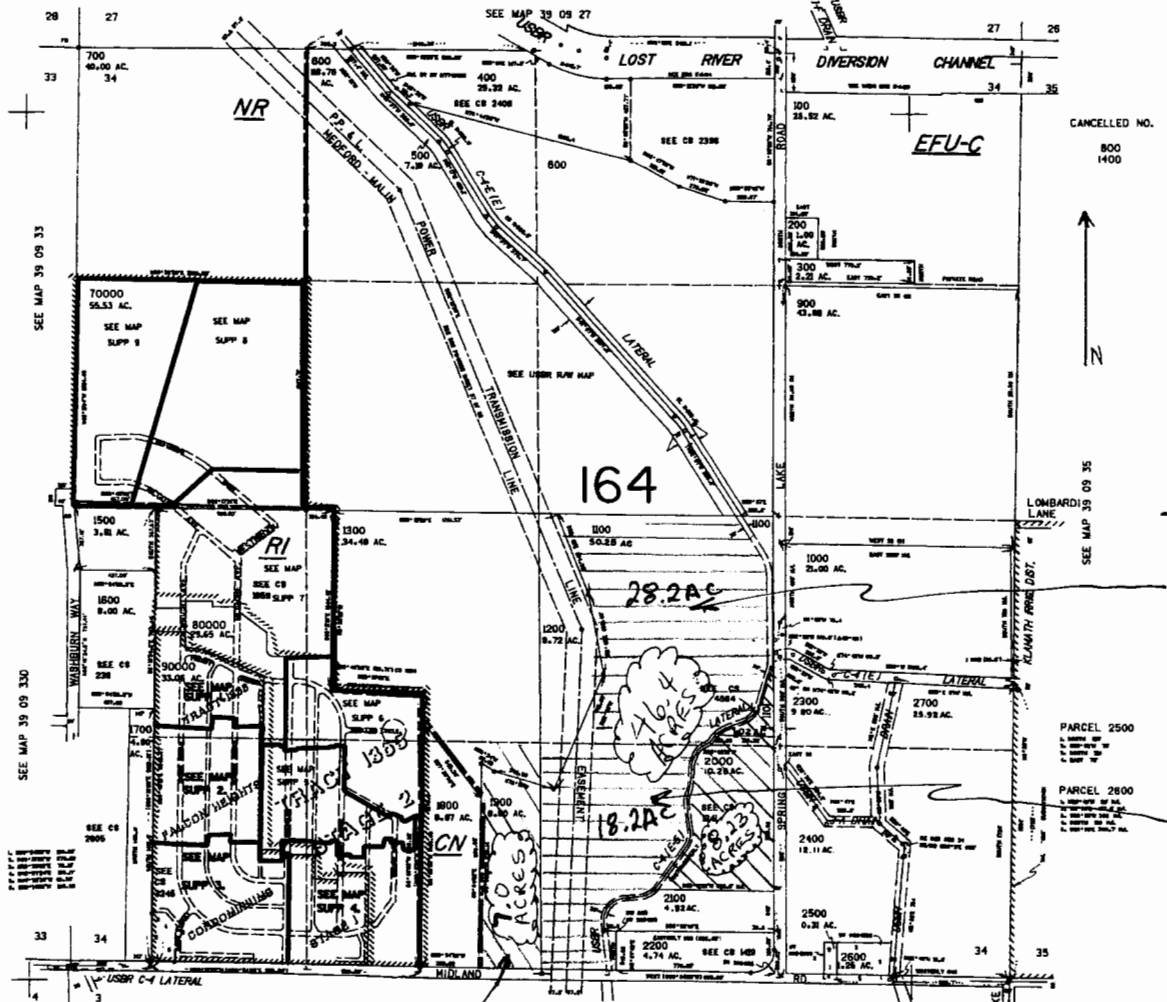
39 09 36
& INDEX

app no. G-16189

THIS MAP WAS PREPARED FOR
ASSESSMENT PURPOSE ONLY

SECTION 34 T.39S. R.09E. W.M.
KLAMATH COUNTY
1" = 400'

39 09 34



CANCELLED NO.
800
1400

TS 39, R9E, S34
FOR NW 4 SE 4
28.2 AC

TS 39, R9E, S34
FOR SW 4 SE 4
18.2 AC + 8.23 AC

TS 39, R9E, S34
FOR E 2 E 2 SE 4 SW 4
7.0 ACRES

39 09 34

RECEIVED
FEB 17 2004
WATER RESOURCES DEPT
SALEM, OREGON

RECEIVED
FEB 05 2004
WATER RESOURCES DEPT
SALEM, OREGON

app no. G-16189