

This supercedes earlier calculations
(5/1/04)

CSA

SECTION 19 T4S R3W W.M.
YAMHILL COUNTY,
1" = 400'

4 3 19

THIS MAP WAS PREPARED FOR
ASSESSMENT PURPOSE ONLY

CANCELLED
1102

RECEIVED

MAY 26 2004

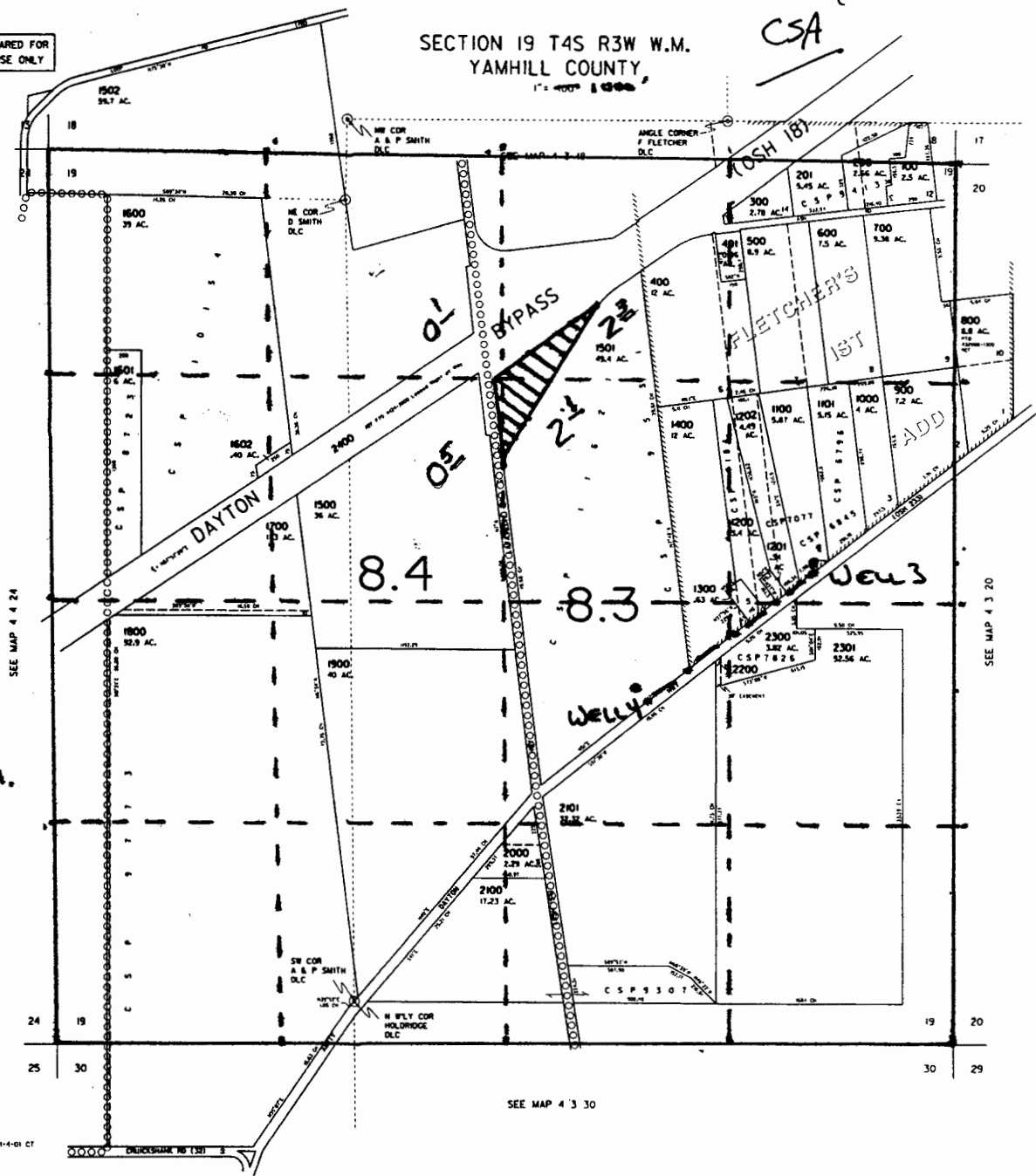
WATER RESOURCES DEPT
SALEM, OREGON

WELL LOCATIONS:

WELL 3 (YAMH 52469): 2410'S
AND 870'W

WELL 4 (YAMH 5447): 3190'S
AND 1930'W

BOTH FROM THE NE CORNER
OF SECTION 19, T4S, R3W, W.M.



SEE MAP 4 3 24

SEE MAP 4 3 20

SEE MAP 4 3 30

REVISED 11-4-01 CT

4 3 19

app no. G 16124