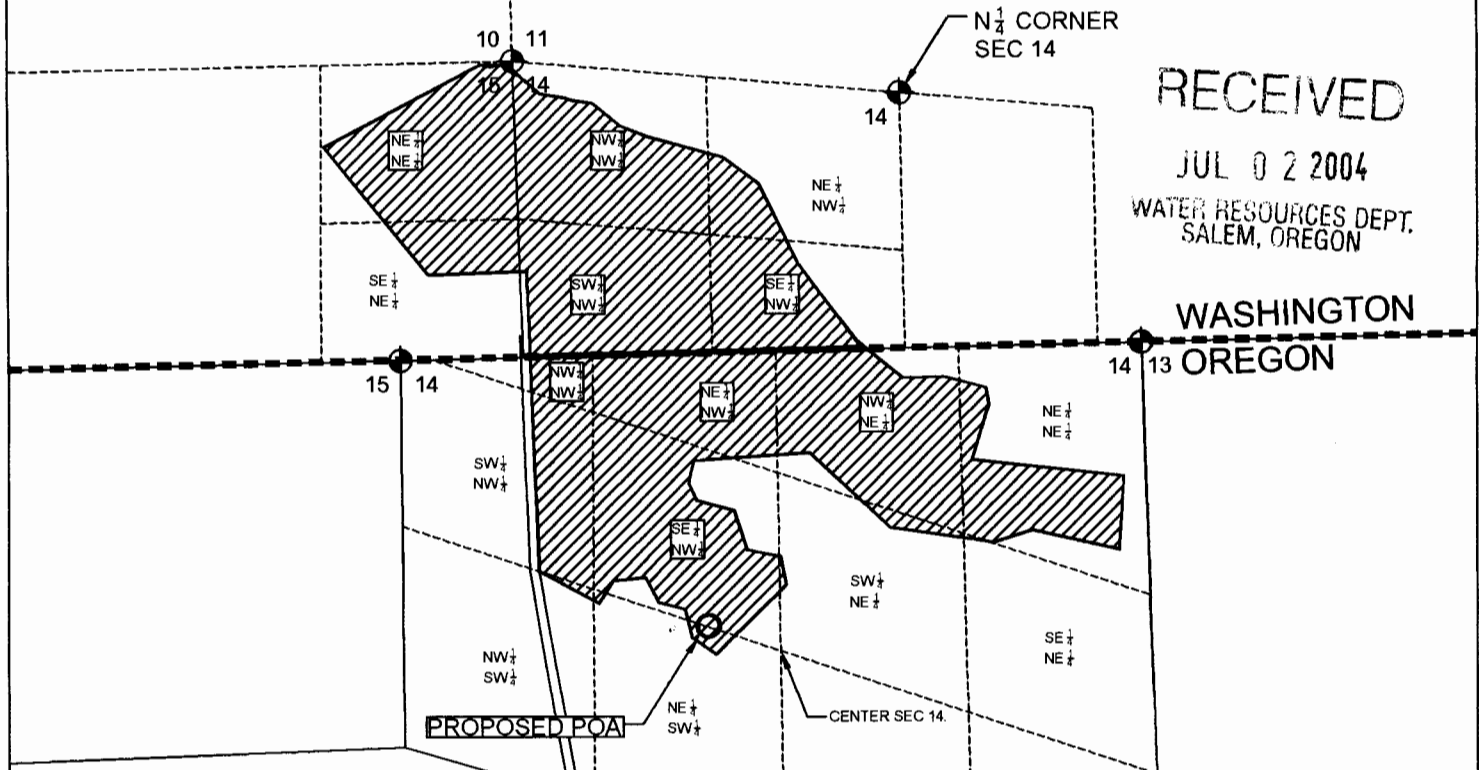
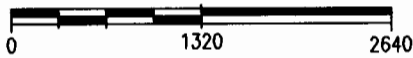


APPLICATION MAP
T6N, R33E, WM



SCALE: 1 inch = 1320 feet



RECEIVED

JUL 02 2004

WATER RESOURCES DEPT.
SALEM, OREGON

WASHINGTON
OREGON

- PROPOSED POA, 173 FT NORTH, 500 FT WEST FROM, CENTER OF SEC 14, T6N, R33E, WM.

WATER TO BE USED FOR AGRICULTURAL IRRIGATION.

PLACE OF USE (WASHINGTON)

NE 1/4, NW 1/4, SEC 14 = 4.0 AC
NW 1/4, NW 1/4, SEC 14 = 18.7 AC
SW 1/4, NW 1/4, SEC 14 = 28.6 AC
SE 1/4, NW 1/4, SEC 14 = 13.8 AC
NE 1/4, NE 1/4, SEC 15 = 16.2 AC
SE 1/4, NE 1/4, SEC 15 = 12.9 AC

TOTAL FOR WA = 94.2 AC

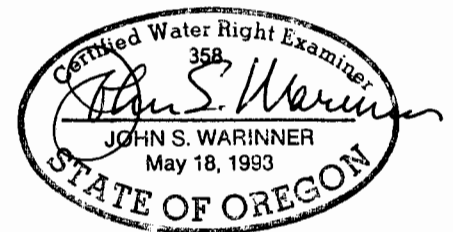
PLACE OF USE (OREGON)

NE 1/4, NE 1/4, SEC 14 = 17.5 AC
NW 1/4, NE 1/4, SEC 14 = 29.8 AC
SW 1/4, NE 1/4, SEC 14 = 1.6 AC
SE 1/4, NE 1/4, SEC 14 = 0.1 AC
NE 1/4, NW 1/4, SEC 14 = 17.6 AC
NW 1/4, NW 1/4, SEC 14 = 1.6 AC
SW 1/4, NW 1/4, SEC 14 = 5.5 AC
SE 1/4, NW 1/4, SEC 14 = 31.4 AC
NE 1/4, SW 1/4, SEC 14 = 1.0 AC
NW 1/4, SW 1/4, SEC 14 = 0.1 AC

TOTAL FOR OR = 106.2 AC

Permittee Signature

*Barbara Brown
Judy Poitras*



APPLICATION MAP

For Permit To Use Groundwater
As Supplemental Water Source
For Agricultural Irrigation

IN THE NAME OF
Barbara Brown and Judy Poitras

Project Name:
Barbara Brown
Judy Poitras
Milton-Freewater, OR
Date:
23 JUNE 2004



**Fountainhead
Irrigation, Inc.**

PO Box 2197 Walla Walla, WA 99362
Phone (509) 529-2646 Fax (509) 522-5251

app no. G-16272