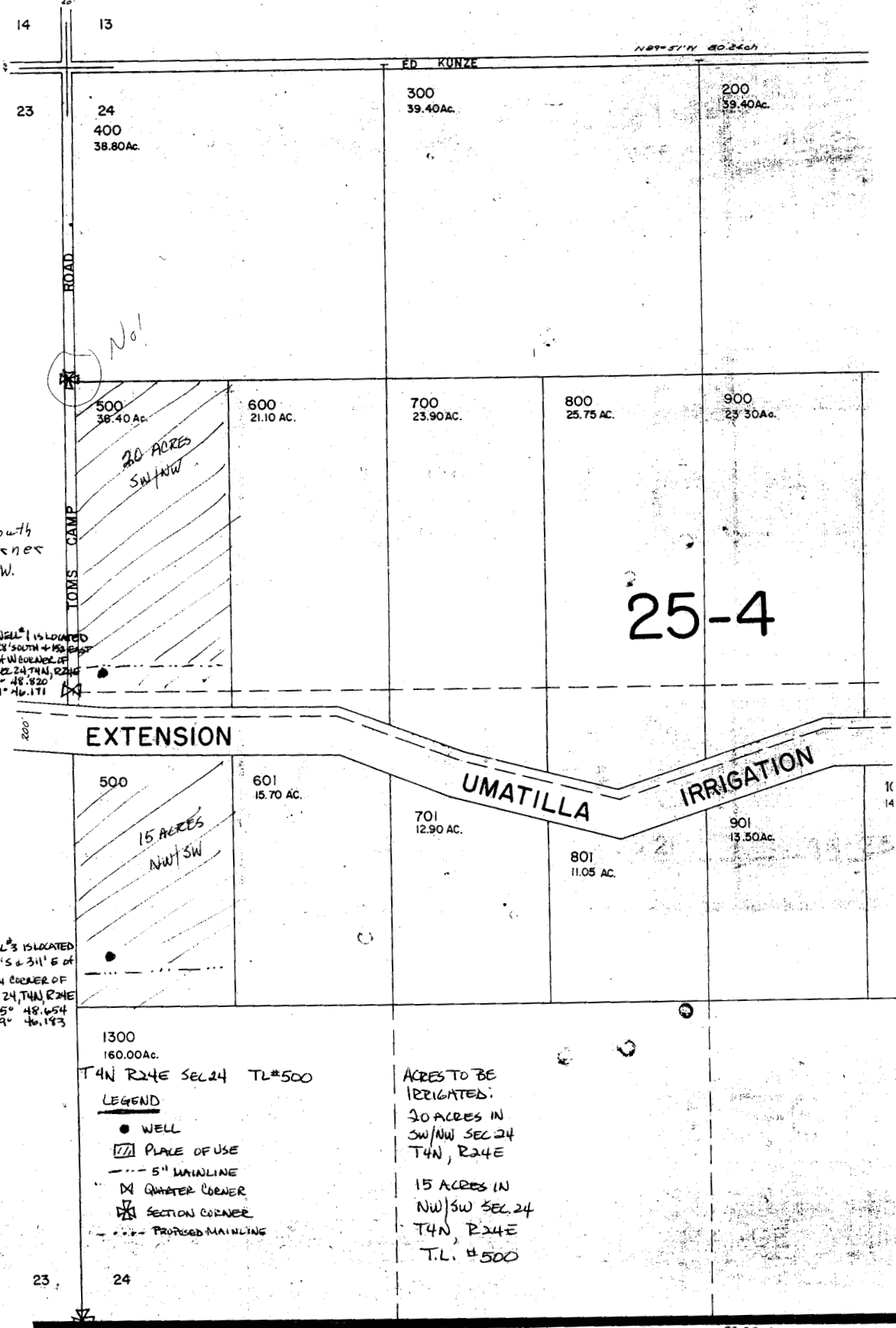


WORK COPY

RECEIVED
AUG 25 2004
WATER RESOURCES DEPT
SALEM, OREGON

SECTION 24 T4N. R24E. W.M
MORROW COUNTY
1" = 400'

SEE MAP 4N 24 13



Well #1
1250' South
of W. Corner
152' E of W.
Corner

WELL #1 IS LOCATED
28' SOUTH + 150' EAST
OF W. CORNER OF
1/4 SEC 24, T4N, R24E
GPS: N 45° 48.820'
W 19° 46.171'

SEE MAP 23

WELL #3 IS LOCATED
1240' S + 311' E of
W 1/4 CORNER OF
SEC 24, T4N, R24E
GPS: N 45° 48.654'
W 19° 46.143'

1300
160.00Ac.
T4N R24E SEC 24 TL#500

- LEGEND**
- WELL
 - ▨ PLACE OF USE
 - 5" MAINLINE
 - ⊠ QUARTER CORNER
 - ⊞ SECTION CORNER
 - - - - PROPOSED MAINLINE

ACRES TO BE
IRRIGATED:
20 ACRES IN
SW/4W SEC 24
T4N, R24E

15 ACRES IN
NW/4W SEC 24
T4N, R24E
T.L. #500

IVED
5 1990
STATE OF OREGON
APPRAISAL DIV.

app no. G16303