

IN 13E 36

SE/SE

ANNUL  
WATER  
CORP

IN 13E 35

RECEIVED

AUG 30 2004

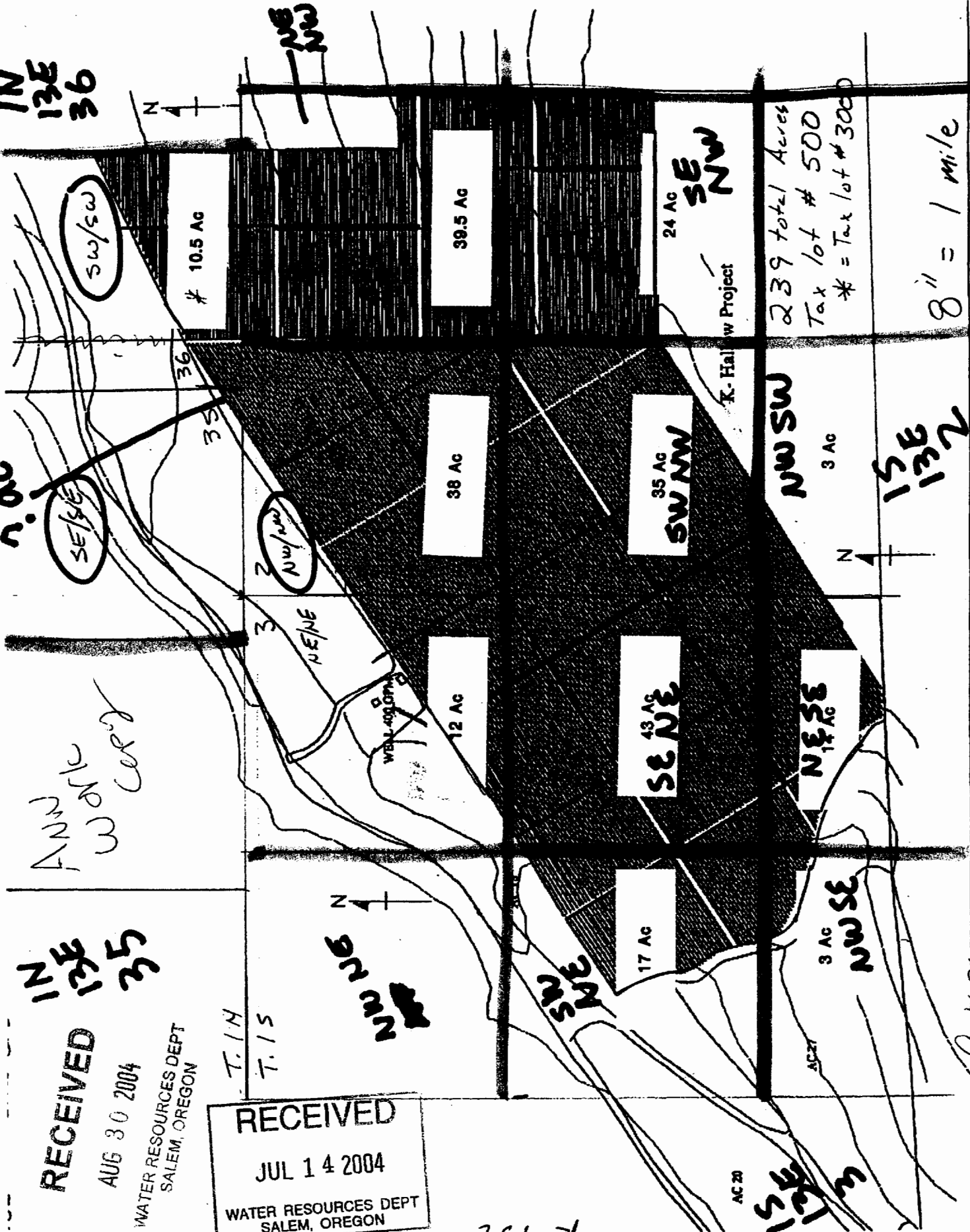
WATER RESOURCES DEPT  
SALEM, OREGON

RECEIVED  
JUL 14 2004  
WATER RESOURCES DEPT  
SALEM, OREGON

T. 1 N  
T. 1 S

WATER  
CORP

R 13 E



239 total Acres  
Tax lot # 500  
\* = Tax lot # 3000

8" = 1 mile

App no. G 16307  
Well = 650 ft S and 550 ft W from NE cor Sec 3