

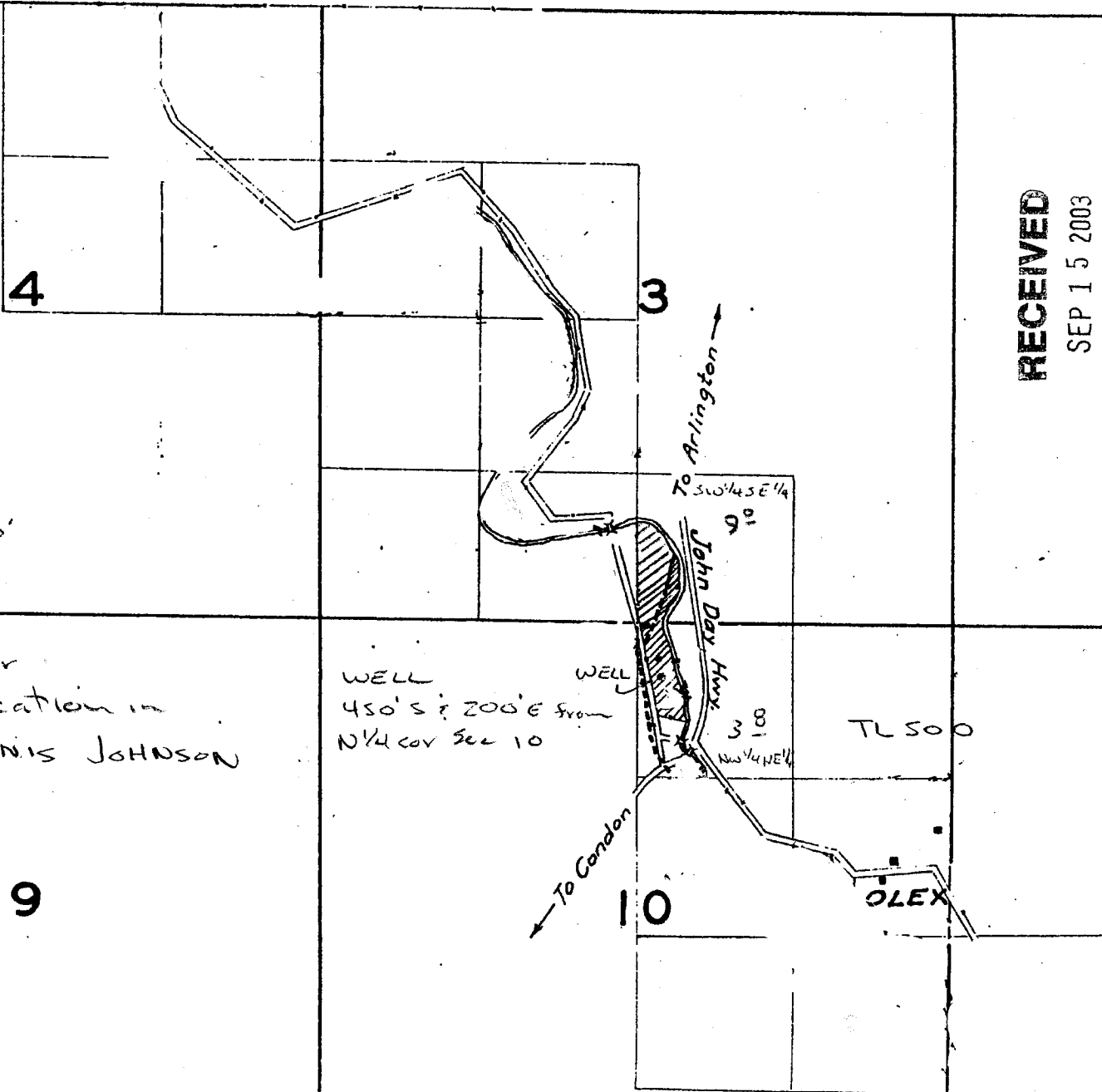
# TOWNSHIP 1 S., RANGE 21 E.

App no. G-16275

RECEIVED  
JUL 16 2004  
WATER RESOURCES DEPT  
SALEM, OREGON



SCALE 1" = 1320'



This map is for  
WELL application in  
name of TANIS JOHNSON

WELL  
450'S; 200'E from  
NW 1/4 cor Sec 10

To Arlington  
30' 1/4 SE 1/4  
John Day Hwy  
3-8  
NW 1/4 NE 1/4

TL 500

OLEX

RECEIVED  
SEP 15 2003  
WATER RESOURCES DEPT  
SALEM, OREGON