

THIS MAP WAS PREPARED FOR ASSESSMENT PURPOSE ONLY

NE 1/4 SEC. 6 T. 2N. R. 1W. W.M.  
MULTNOMAH COUNTY  
1" = 200'

2N

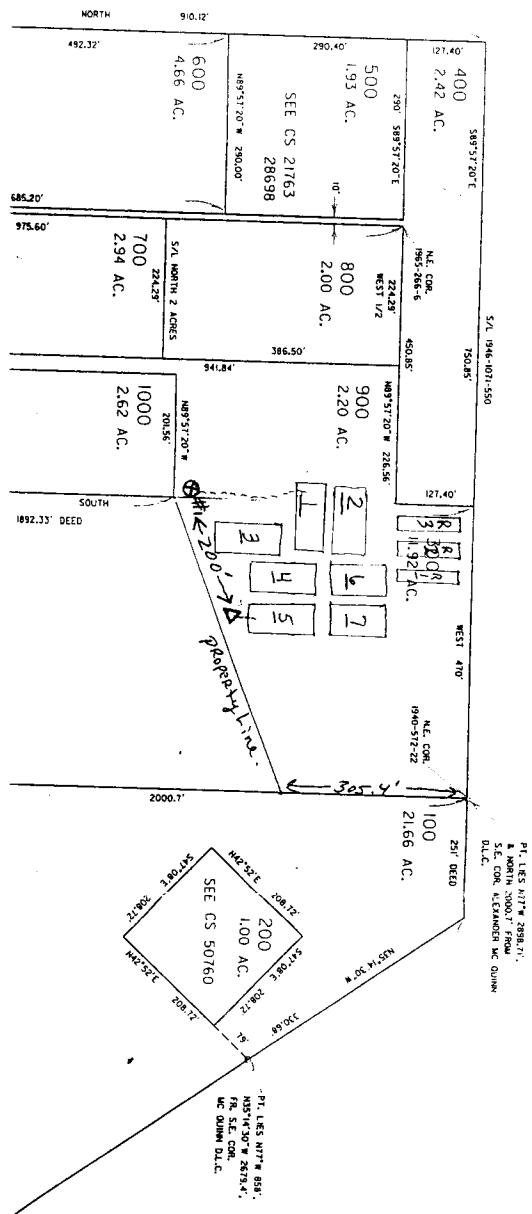
1/4 COR.  
S/L ALEXANDER MC QUINN D.L.C. 41  
N/L ALEXANDER MC QUINN D.L.C. 50

PROPOSED WELL #2 TO BE LOCATED FROM COMMON BOUNDARIES 31, 32, 5, 6.

1160 ft SOUTH  
1700 ft WEST

EXISTING WELL #1 LOCATED 1365 FT NORTH & 755 FT EAST FROM THIS CORNER 1/4 CORNER OF SECTION 6.

SEE MAP 3N 1W 31 SEE MAP 3N 1W



RECEIVED  
SEP 30 2004  
WATER RESOURCES DEPT  
SALEM, OREGON

#1 - First well & water right & permit #  
#2 - Second proposed well & p.  
Approx 200' from #1 well

App no. G-16250