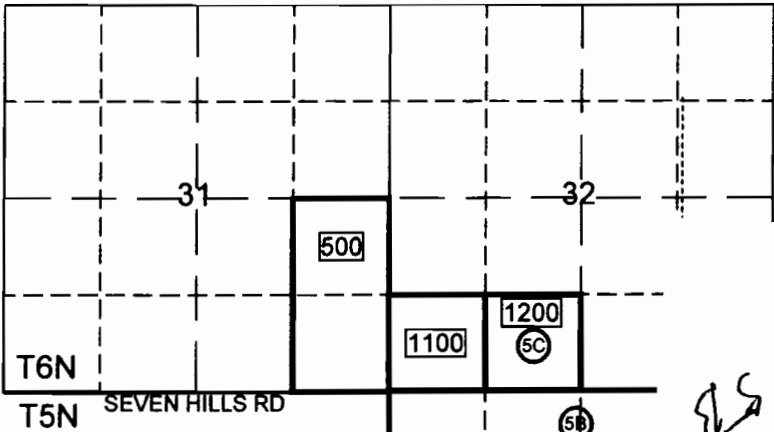


App# G-16-225

T5 & 6N, R35E, WM - UMATILLA COUNTY



RECEIVED  
SEP 29 2004  
WATER RESOURCES DEPT  
SALEM, OREGON

- Proposed POA'S
- 3A) 1261 Feet South and 232 Feet West From Center of Section 3.
- 3B) 666 Feet South and 1781 Feet West From NE Corner of Section 10.
- 4A) 1830 Feet South and 686 Feet East From NW Corner of Section 4.
- 4B) 320 Feet South and 226 Feet East From Center of Section 4.
- 5A) 81 Feet North and 1292 Feet East From Center of Section 5.
- 5B) 452 Feet South and 2575 Feet East From NW Corner of Section 5.
- 5C) 812 Feet North and 1985 Feet East From SW Corner of Section 32.

SEC	QTR - QTR	ACRES	TAXLOT #
31	NE 1/4 - SE 1/4	40.0	500
31	SE 1/4 - SE 1/4	40.0	500
32	SW 1/4 - SW 1/4	40.0	1100
32	SE 1/4 - SW 1/4	40.0	1200
3	NW 1/4 - SE 1/4	40.0	3000
3	SW 1/4 - SE 1/4	40.0	3000
3	SE 1/4 - SW 1/4	40.0	3000
3	NE 1/4 - SW 1/4	40.0	3000
4	NE 1/4 - SE 1/4	30.0	400
4	NW 1/4 - SE 1/4	30.0	400
4	SW 1/4 - SE 1/4	40.0	400
4	SE 1/4 - SE 1/4	40.0	400
4	NE 1/4 - SW 1/4	25.7	400
4	NW 1/4 - SW 1/4	29.6	800/400
4	SE 1/4 - SW 1/4	12.7	400
4	SW 1/4 - SW 1/4	21.3	800
4	SW 1/4 - NW 1/4	27.3	400/800
5	NE 1/4 - NE 1/4	16.5	8
5	SE 1/4 - NE 1/4	25.3	8
5	SW 1/4 - NE 1/4	40.0	8
5	NW 1/4 - NE 1/4	40.0	8
5	NE 1/4 - SE 1/4	40.0	8
5	SE 1/4 - SE 1/4	40.0	8
5	SW 1/4 - SE 1/4	40.0	8
5	NW 1/4 - SE 1/4	40.0	8
5	NE 1/4 - SW 1/4	40.0	8
5	SE 1/4 - SW 1/4	40.0	8
5	SW 1/4 - SW 1/4	35.8	8
5	NW 1/4 - SW 1/4	35.8	8
5	NE 1/4 - NW 1/4	40.0	8
5	SE 1/4 - NW 1/4	40.0	8
5	SW 1/4 - NW 1/4	35.8	8
5	NW 1/4 - NW 1/4	35.8	8
8	NE 1/4 - NE 1/4	40.0	8
8	SE 1/4 - NE 1/4	25.4	8
8	SW 1/4 - NE 1/4	20.0	8
8	NW 1/4 - NE 1/4	40.0	8
8	NE 1/4 - NW 1/4	40.0	8
8	SE 1/4 - NW 1/4	20.4	8
9	NE 1/4 - NE 1/4	40.0	9
9	SE 1/4 - NE 1/4	40.0	400
9	NW 1/4 - NE 1/4	33.5	400
9	NE 1/4 - NW 1/4	0.7	400
9	NW 1/4 - NW 1/4	8.4	800
10	NW 1/4 - NE 1/4	25.0	1500
10	SW 1/4 - NE 1/4	15.8	1500
10	NW 1/4 - NW 1/4	25.7	1401
10	SW 1/4 - NW 1/4	1.2	1401
10	NE 1/4 - NW 1/4	0.3	1401

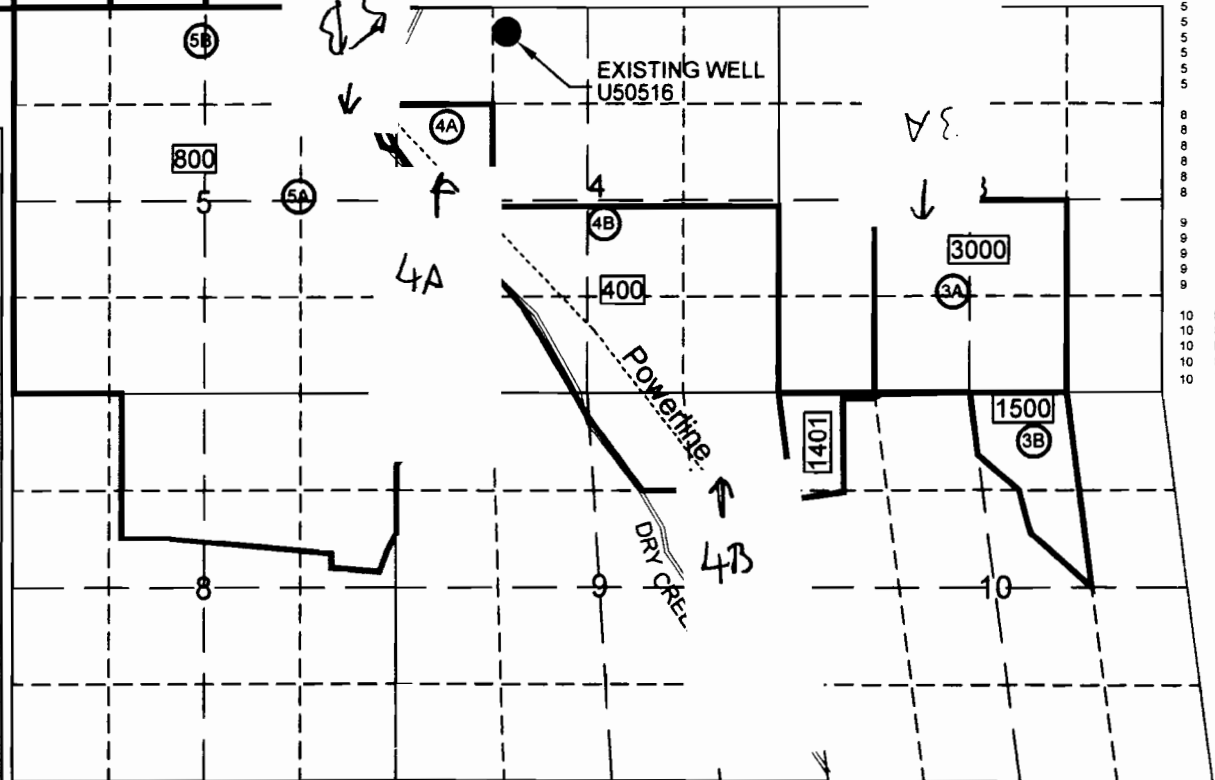
TOTAL ACRES BY TAXLOT #

ACRES	TAXLOT #
326.5	400
80.0	500
813.5	800
40.0	1100
40.0	1200
27.2	1401
40.8	1500
180.0	3000
1528	TOTAL AC.

Permittee Signature  
*Mary Kibben*

Certified Water Right Examiner  
35B  
*John S. Warinner*  
JOHN S. WARINNER  
May 18, 1993  
STATE OF OREGON

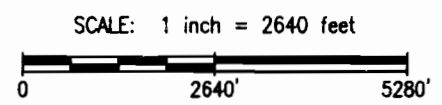
APPLICATION MAP  
For Permit To  
Appropriate Groundwater  
FOR  
SEVEN HILLS PROPERTIES, LLC  
1244 FORREST LANE  
WALLA WALLA, WA 99362  
Mapped, Sept 15, 2004



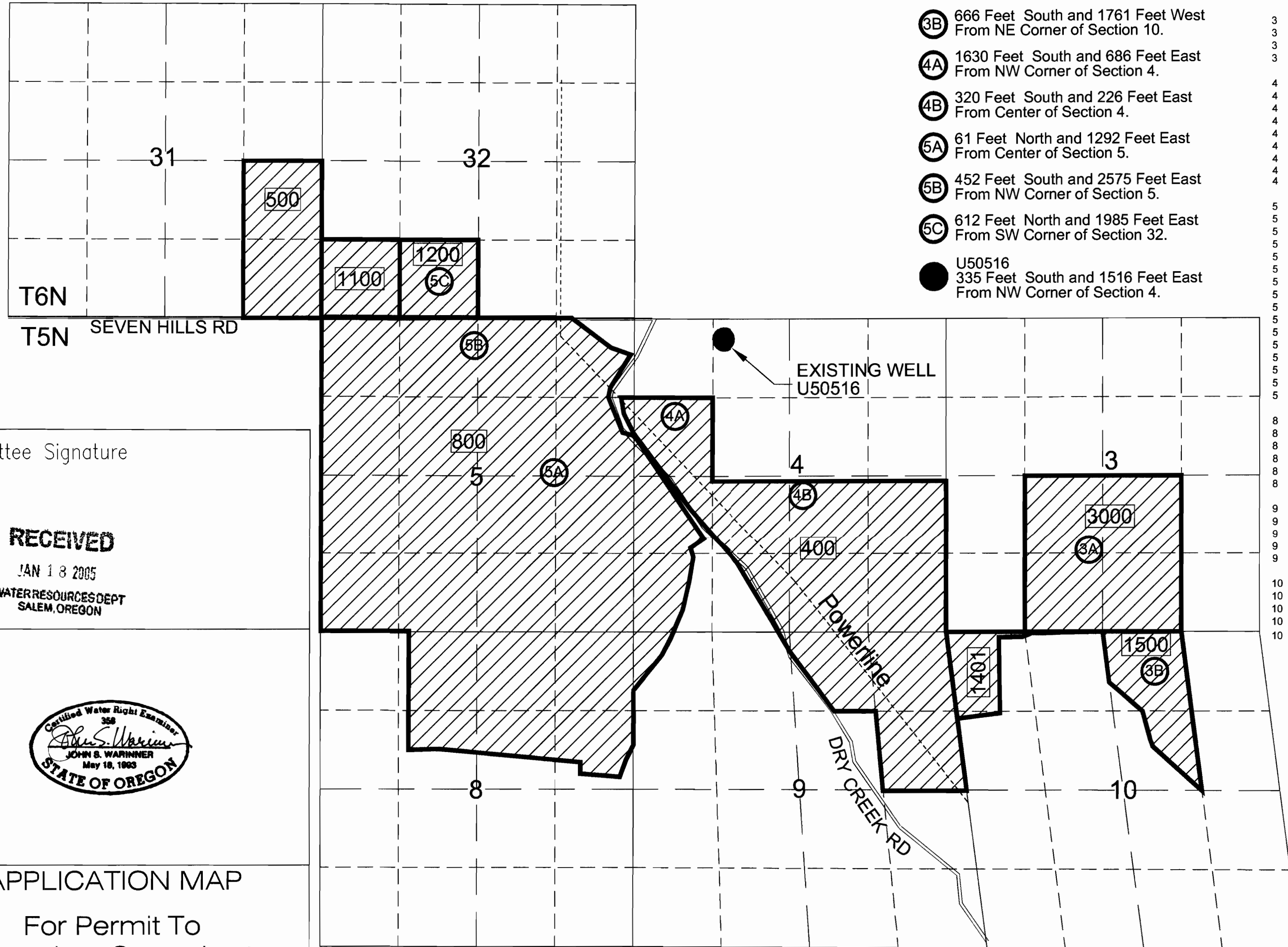
The purpose of this map is to identify the location of the water right. It is not intended to provide information relative to the location of property ownership boundary lines.



**Fountainhead Irrigation, Inc.**  
PO Box 2197 Walla Walla, WA 99362  
Phone (509) 529-2646 Fax (509) 522-5251



# T5 & 6N, R35E, WM - UMATILLA COUNTY



- Proposed POA'S
- ③A 1261 Feet South and 232 Feet West From Center of Section 3.
- ③B 666 Feet South and 1761 Feet West From NE Corner of Section 10.
- ④A 1630 Feet South and 686 Feet East From NW Corner of Section 4.
- ④B 320 Feet South and 226 Feet East From Center of Section 4.
- ⑤A 61 Feet North and 1292 Feet East From Center of Section 5.
- ⑤B 452 Feet South and 2575 Feet East From NW Corner of Section 5.
- ⑤C 612 Feet North and 1985 Feet East From SW Corner of Section 32.
- U50516  
335 Feet South and 1516 Feet East From NW Corner of Section 4.

SEC	QTR - QTR	ACRES	TAXLOT #
31	NE 1/4 - SE 1/4	40.0	500
31	SE 1/4 - SE 1/4	40.0	500
32	SW 1/4 - SW 1/4	40.0	1100
32	SE 1/4 - SW 1/4	40.0	1200
3	NW 1/4 - SE 1/4	40.0	3000
3	SW 1/4 - SE 1/4	40.0	3000
3	SE 1/4 - SW 1/4	40.0	3000
3	NE 1/4 - SW 1/4	40.0	3000
4	NE 1/4 - SE 1/4	30.0	400
4	NW 1/4 - SE 1/4	30.0	400
4	SW 1/4 - SE 1/4	40.0	400
4	SE 1/4 - SE 1/4	40.0	400
4	NE 1/4 - SW 1/4	25.7	400
4	NW 1/4 - SW 1/4	29.6	800/400
4	SE 1/4 - SW 1/4	12.7	400
4	SW 1/4 - SW 1/4	21.3	800
4	SW 1/4 - NW 1/4	27.3	400/800
5	NE 1/4 - NE 1/4	16.5	800
5	SE 1/4 - NE 1/4	25.3	800/400
5	SW 1/4 - NE 1/4	40.0	800
5	NW 1/4 - NE 1/4	40.0	800
5	NE 1/4 - SE 1/4	40.0	800
5	SE 1/4 - SE 1/4	40.0	800
5	SW 1/4 - SE 1/4	40.0	800
5	NW 1/4 - SE 1/4	40.0	800
5	NE 1/4 - SW 1/4	40.0	800
5	SE 1/4 - SW 1/4	40.0	800
5	SW 1/4 - SW 1/4	35.8	800
5	NW 1/4 - SW 1/4	35.8	800
5	NE 1/4 - NW 1/4	40.0	800
5	SE 1/4 - NW 1/4	40.0	800
5	SW 1/4 - NW 1/4	35.8	800
5	NW 1/4 - NW 1/4	35.8	800
8	NE 1/4 - NE 1/4	40.0	800
8	SE 1/4 - NE 1/4	25.4	800
8	SW 1/4 - NE 1/4	20.0	800
8	NW 1/4 - NE 1/4	40.0	800
8	NE 1/4 - NW 1/4	30.0	800
8	SE 1/4 - NW 1/4	20.4	800
9	NE 1/4 - NE 1/4	40.0	400
9	SE 1/4 - NE 1/4	40.0	400
9	NW 1/4 - NE 1/4	33.5	400
9	NE 1/4 - NW 1/4	0.7	400
9	NW 1/4 - NW 1/4	8.4	800
10	NW 1/4 - NE 1/4	25.0	1500
10	SW 1/4 - NE 1/4	15.8	1500
10	NW 1/4 - NW 1/4	25.7	1401
10	SW 1/4 - NW 1/4	1.2	1401
10	NE 1/4 - NW 1/4	0.3	1401

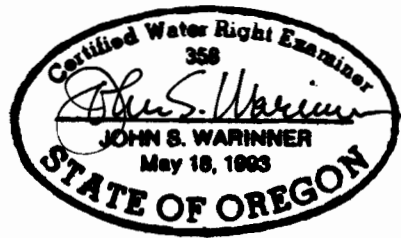
\*TOTAL ACRES BY TAXLOT #

ACRES	TAXLOT #
326.5	400
80.0	500
813.5	800
40.0	1100
40.0	1200
27.2	1401
40.8	1500
160.0	3000
1528	TOTAL AC.

Permittee Signature

**RECEIVED**

JAN 18 2005  
WATER RESOURCES DEPT  
SALEM, OREGON

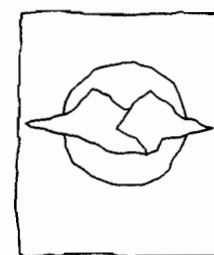


APPLICATION MAP  
For Permit To  
Appropriate Groundwater

FOR  
SEVEN HILLS PROPERTIES, LLC  
1244 FORREST LANE  
WALLA WALLA, WA 99362

Map Revised Jan 12, 2005

The purpose of this map is to identify the location of the water right. It is not intended to provide information relative to the location of property ownership boundary lines.



**Fountainhead  
Irrigation, Inc.**

PO Box 2197 Walla Walla, WA 99362  
Phone (509) 529-2646 Fax (509) 522-5251



SCALE: 1 inch = 1320 feet  
0 1320' 2640'