



SCALE 1" = 1320'



Lands with Primary rights from well #2 (G-3440) and supplemental rights from well #3 (G-3440) and supplemental rights from proposed well No. 4.



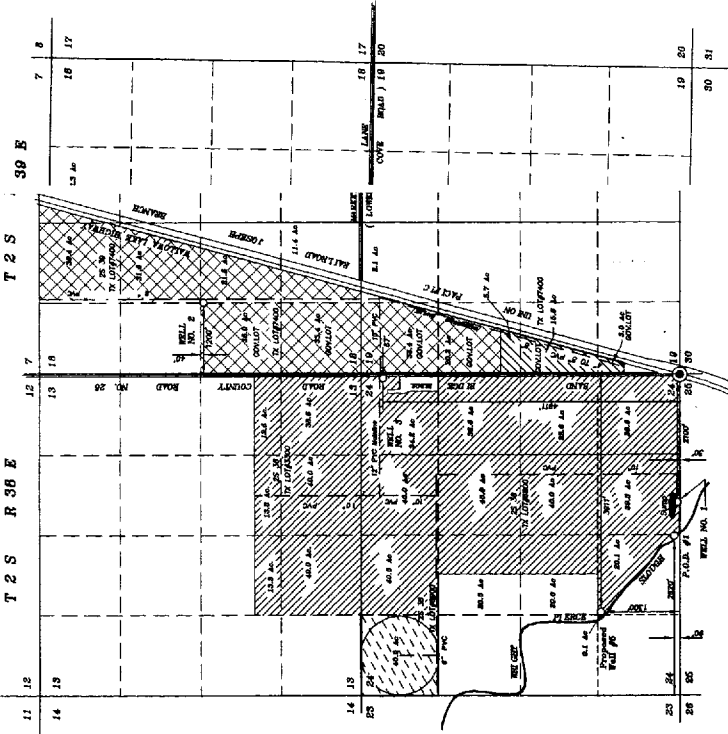
Lands with Primary rights from P.O.D. #1 (G-3440) and supplemental rights from well No. 1 and well No. 3 (G-3440) requiring supplemental rights from proposed well No. 4.



Lands with Primary rights from well #3 (G-3440) requiring supplemental rights from well No. 1, #2 and proposed well No. 4.



Lands with Primary rights from well #1 (G-3440) requiring supplemental rights from well No. 1, #2 and proposed well No. 4.



RECEIVED
MAR 05 2004
WATER RESOURCES DEPT
SALEM, OREGON

APPLICATION MAP OF
WATER RIGHTS FROM
A NEW WELL

FOR
JOHN C. CUTHBERT
BY
HAGETT - GRAYSON & BLACKMAN
2008
LAGRANDE, OREGON 97860
MARCH 3, 2004

APPLICATION NO. _____
PERMIT NUMBER _____

Application G-16200



NOTE: The preparation of this map was based on the information provided by the applicant. The Department of Water Resources does not warrant the accuracy of the information provided by the applicant.