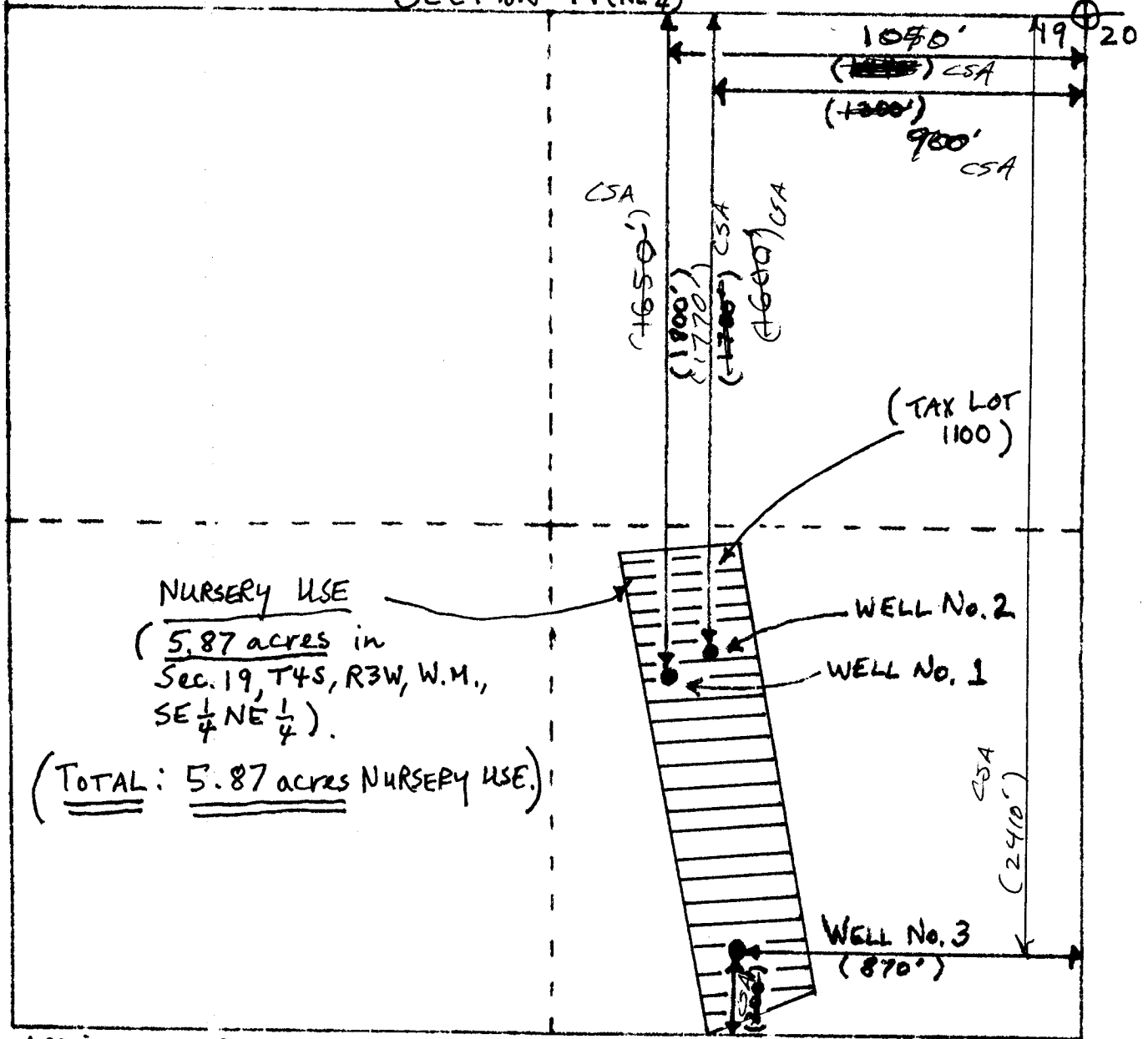


CHANGED OK!
JERRY
SCOTT

Scale:
1" = 400'



T4S, R3W, W.M.
SECTION 19 (NE 1/4)



NURSERY USE
(5.87 acres in
Sec. 19, T4S, R3W, W.M.,
SE 1/4 NE 1/4).

(TOTAL: 5.87 acres NURSERY USE.)

APPLICANT: BOB TERRY
REFERENCE: FILE G-15445

YAMHILL COUNTY