

This map was prepared for assessment purposes only.

SW 1/4 SEC 28 125. K.T.E. W.M. CLACKAMAS COUNTY D. L.C. NO. 56 3 1E 29D
17.800' APPROX 300 FEET
D. PENDLETON

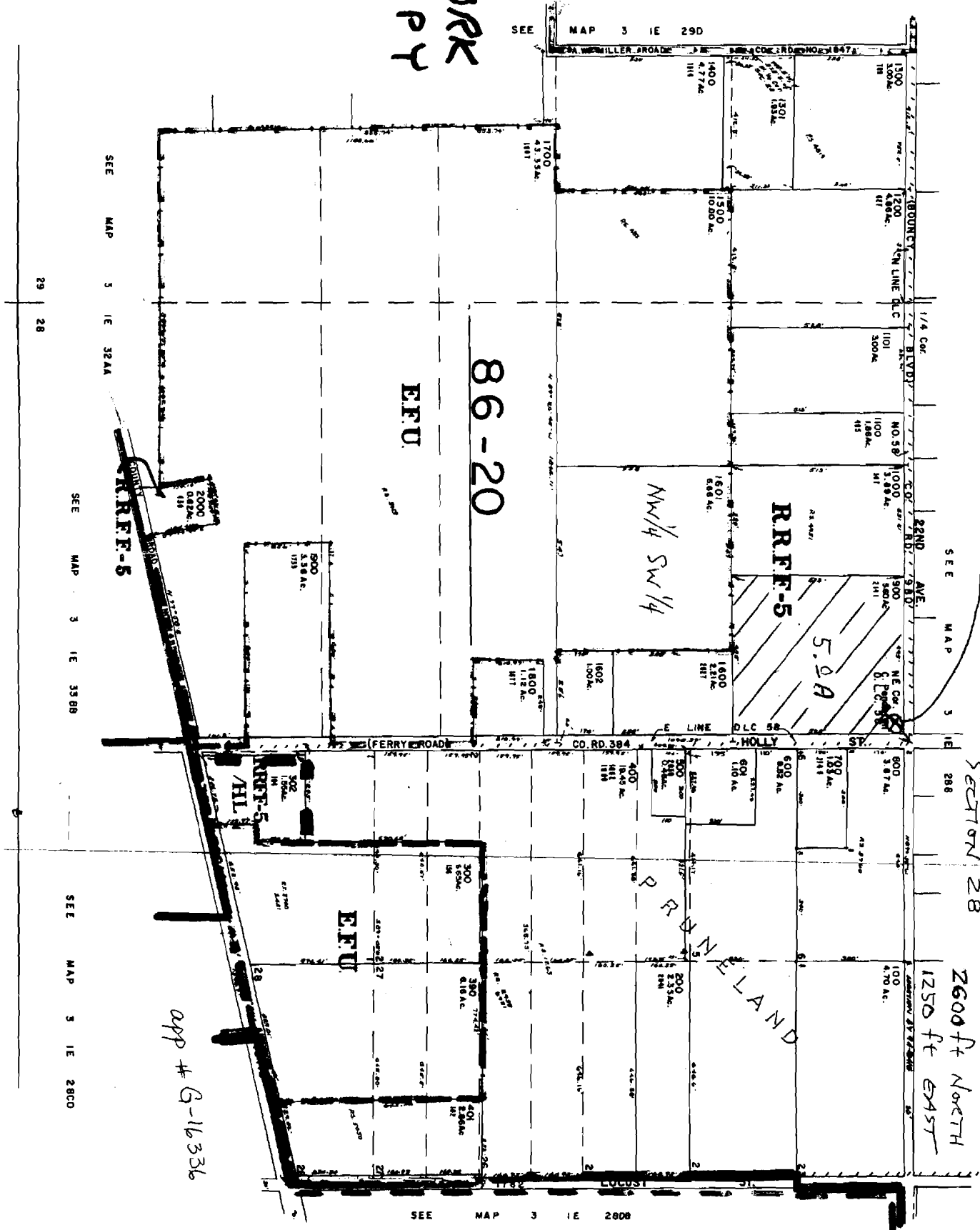
Well location FROM SW CORNER SECTION 28

2600 ft NORTH
1250 ft EAST

CANCELLED TAX LOTS
301
302

WORK COPY

RECEIVED
NOV 05 2004
WATER RESOURCES DEPT
SALEM, OREGON



app # G-16336