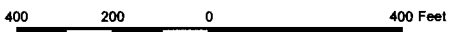


**JIM WALISER  
GROUND WATER APPLICATION  
T6 N, R35 E W.M. NW1/4 NW1/4 SEC 23  
TAX LOT # 300**







1 inch equals 400 feet

*app # G 16350*

RECEIVED

DEC 02 2004

**Legend**

-  Corner Section 23
-  Section Lines
-  Qtr Qtr Lines
-  Proposed POU 19.11 Acres in the NW1/4NW1/4 S23

WATER RESOURCES DEPT  
See attached map for tax lot boundaries.

Note: Lines and boundaries have been interpreted from public records. Locations shown are only approximate and should not be used in legal, financial, or real estate decisions.

THIS MAP WAS PREPARED FOR ASSESSMENT PURPOSES ONLY

3/31/05  
Entered in file  
by S Gamm

NW1/4 Sec. 23 T6N. R35E W1M.  
UMATILLA COUNTY

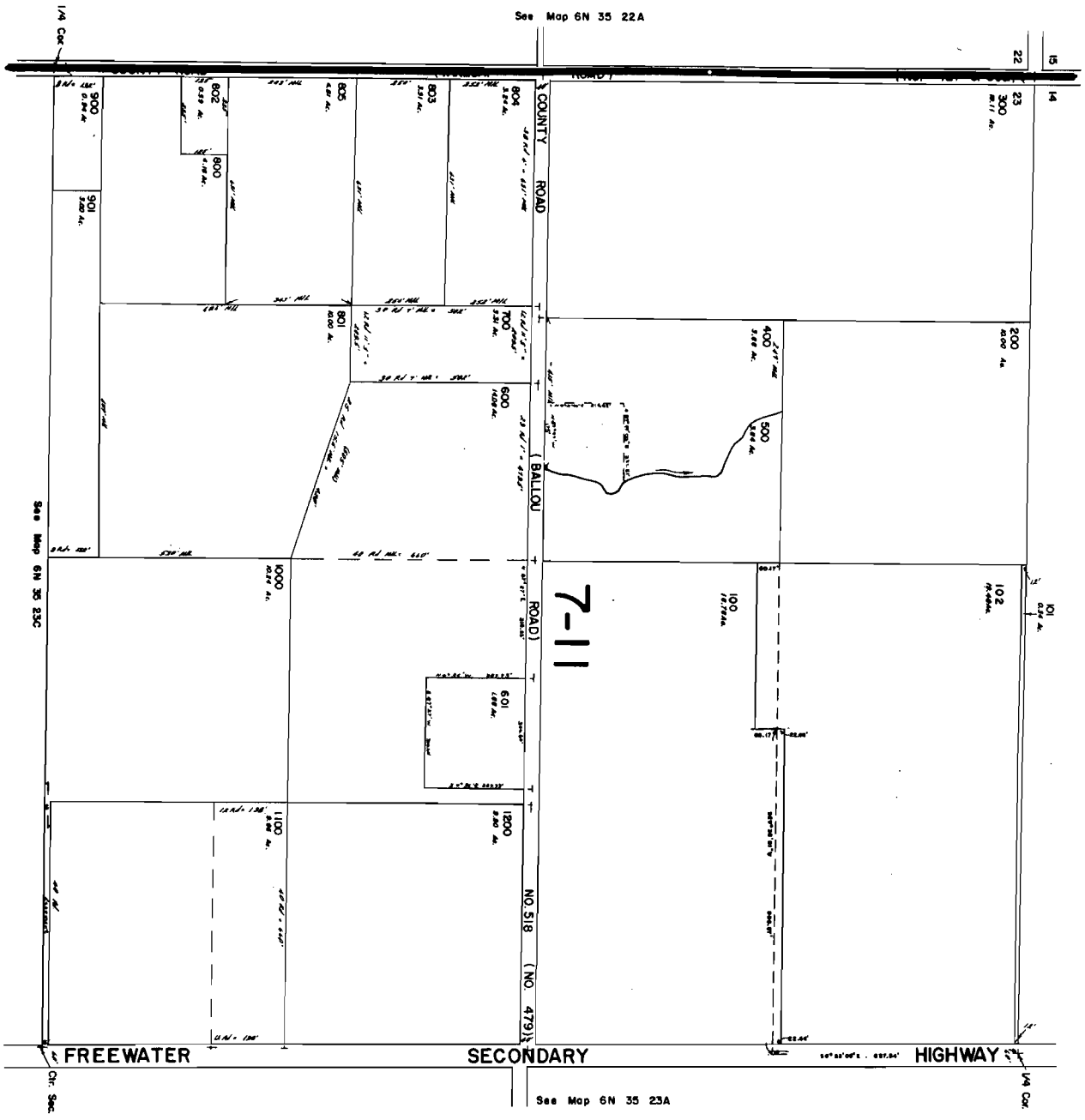
See Map 6N 35 14C

1"=200'

Aerial Photo No. NZ-6P-49

6N 35 23B

See Map 6N 35 22A



See Map 6N 35 23A

CANCELLED TL 501

6N 35 23B