

Well is located 583 ft N ↑
 South of Ctr line and
 787' East of Center line

Irrigation of 1^o acre
 in the NW/SE of Sect. 36
 5N 28E

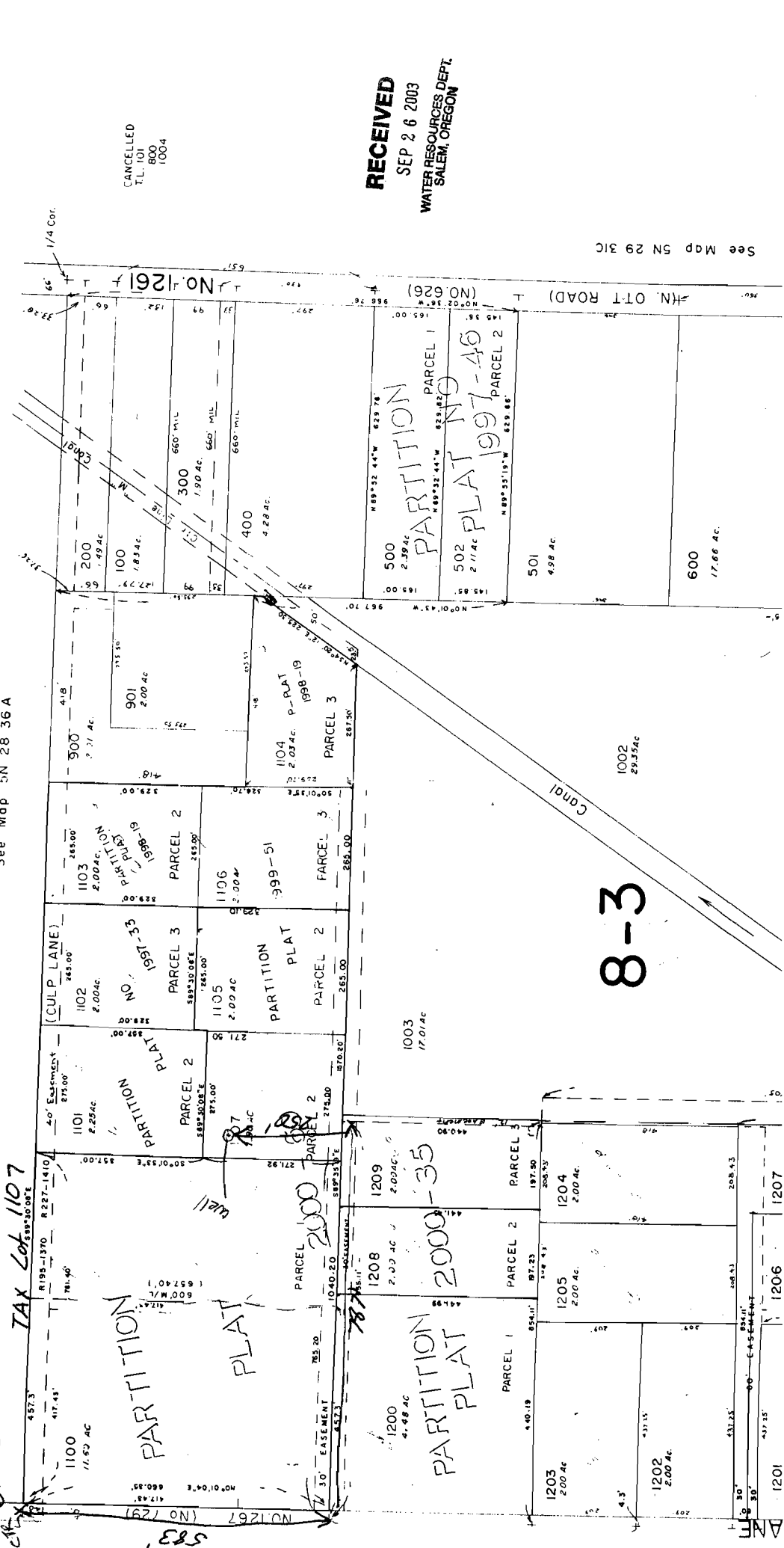
SE 1/4 Sec. 36 T.5N. R.28E.W.M.
 UMATILLA COUNTY

App # G-16094

5N 28 36D

1" = 200'

See Map 5N 28 36A



Aerial Photo No. IP-102

CANCELLED
 T.L. 100
 800
 1004

RECEIVED
 SEP 26 2003
 WATER RESOURCES DEPT.
 SALEM, OREGON

See Map 5N 29 31C

8-3