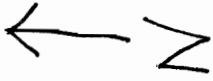


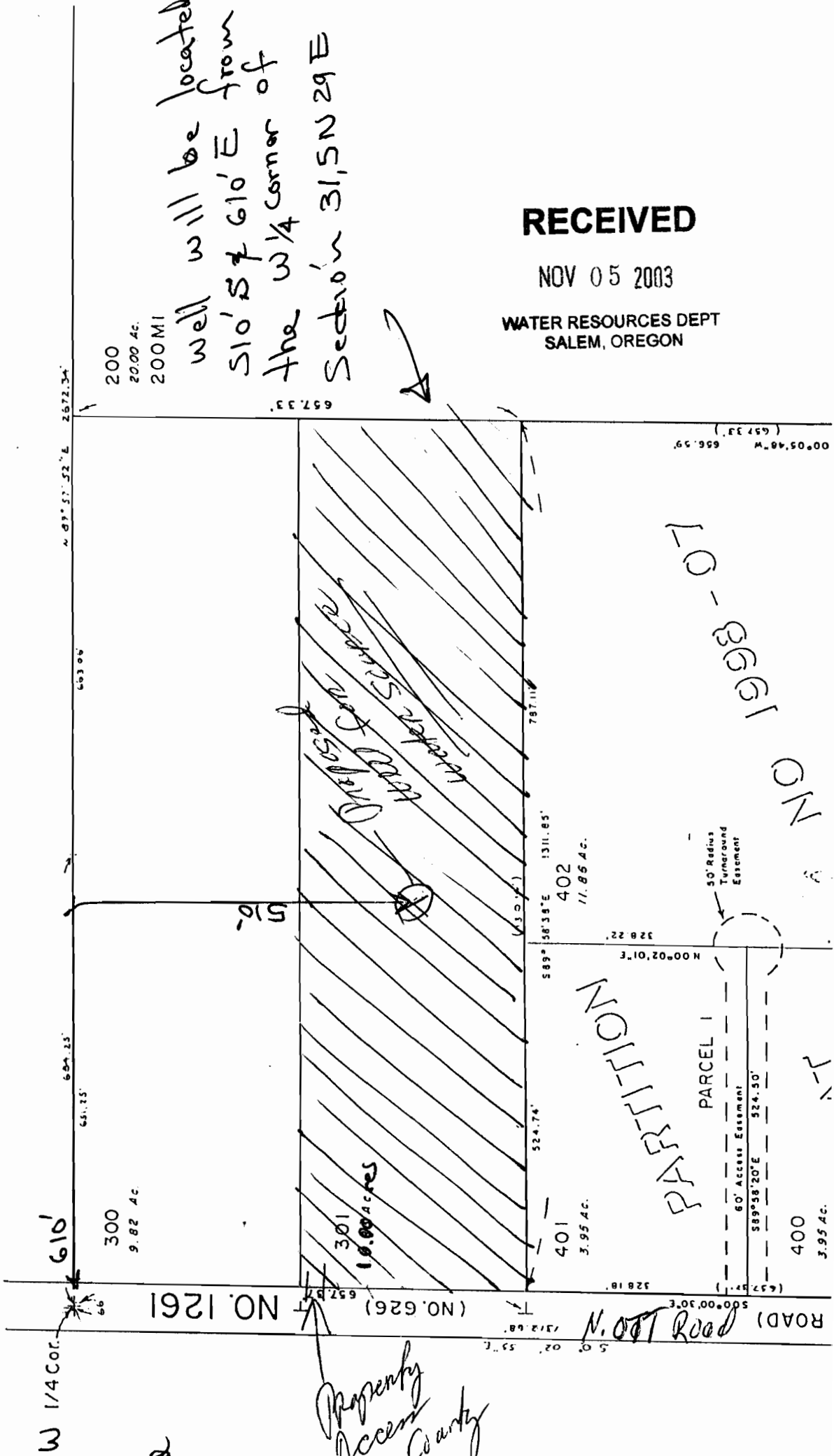
THIS MAP WAS PREPARED FOR  
ASSESSMENT PURPOSES ONLY

SW1/4 Sec. 31 T.5N. R.29 E.W.M.  
UMATILLA COUNTY



1" = 200'

See Map 5N 29 31B



10 Acres to be irrigated  
in the NW 1/4 of SW 1/4  
Section 31, 5N 29 E

Property Access  
from County  
Road

well will be located  
510' S x 610' E  
from  
the W 1/4 corner of  
Section 31, 5N 29 E

RECEIVED

NOV 05 2003

WATER RESOURCES DEPT  
SALEM, OREGON

PARCELS  
1999-07

NOV 05 2003