

EC 21 T 5N R 28E WM  
MATILLA COUNTY, OR

SCALE: 1" = 400'

See Map 5N 28B

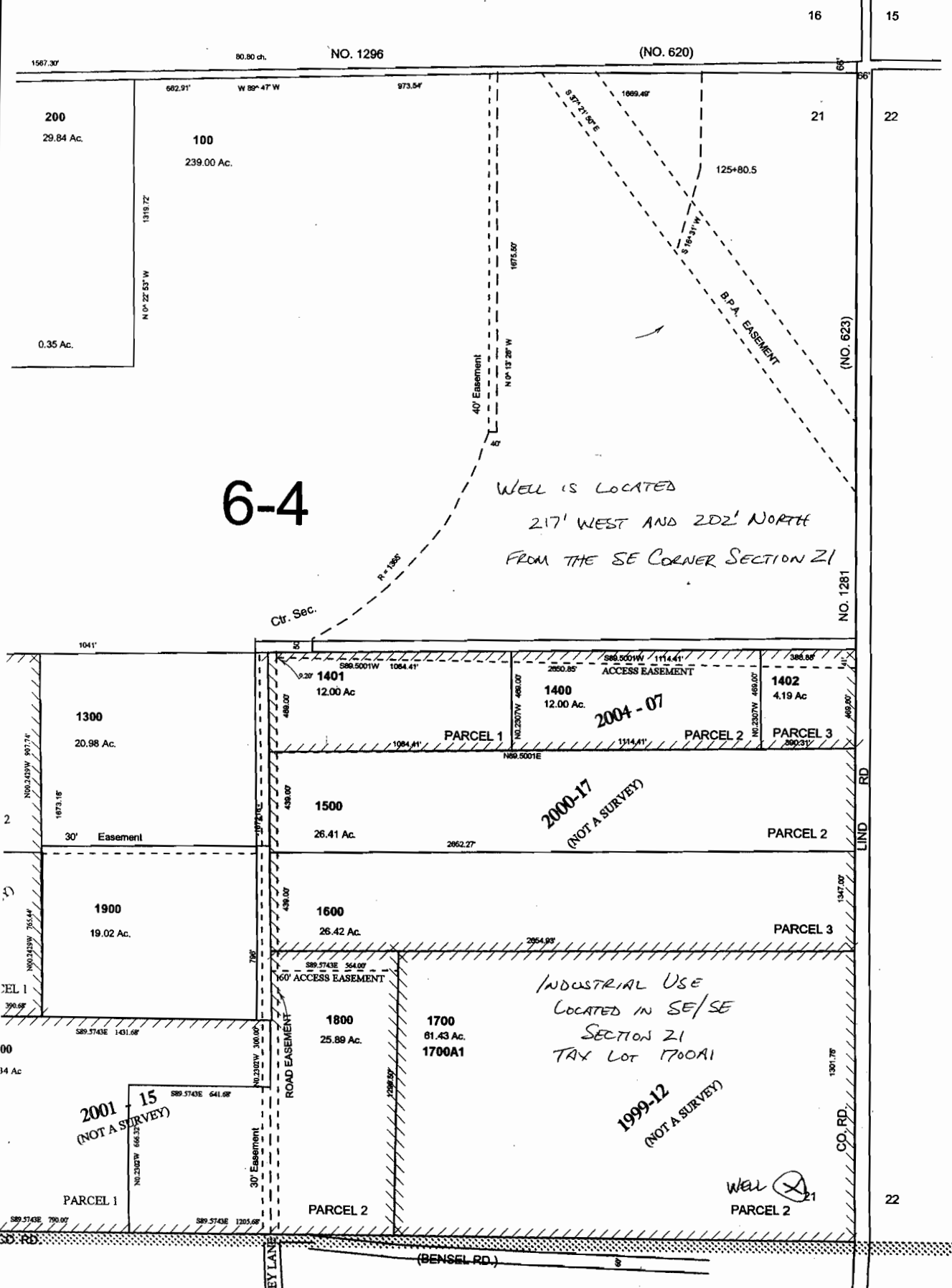
app no. G 16313



3/19/03  
**RECEIVED**

SEP 16 2004

WATER RESOURCES DEPT  
SALEM, OREGON



6-4

Well is located  
217' WEST AND 202' NORTH  
FROM THE SE CORNER SECTION 21

2000-17  
(NOT A SURVEY)

INDUSTRIAL USE  
LOCATED IN SE/SE  
SECTION 21  
TAX LOT 1700A1

1999-12  
(NOT A SURVEY)

2001-15  
(NOT A SURVEY)

Well (X)  
PARCEL 2