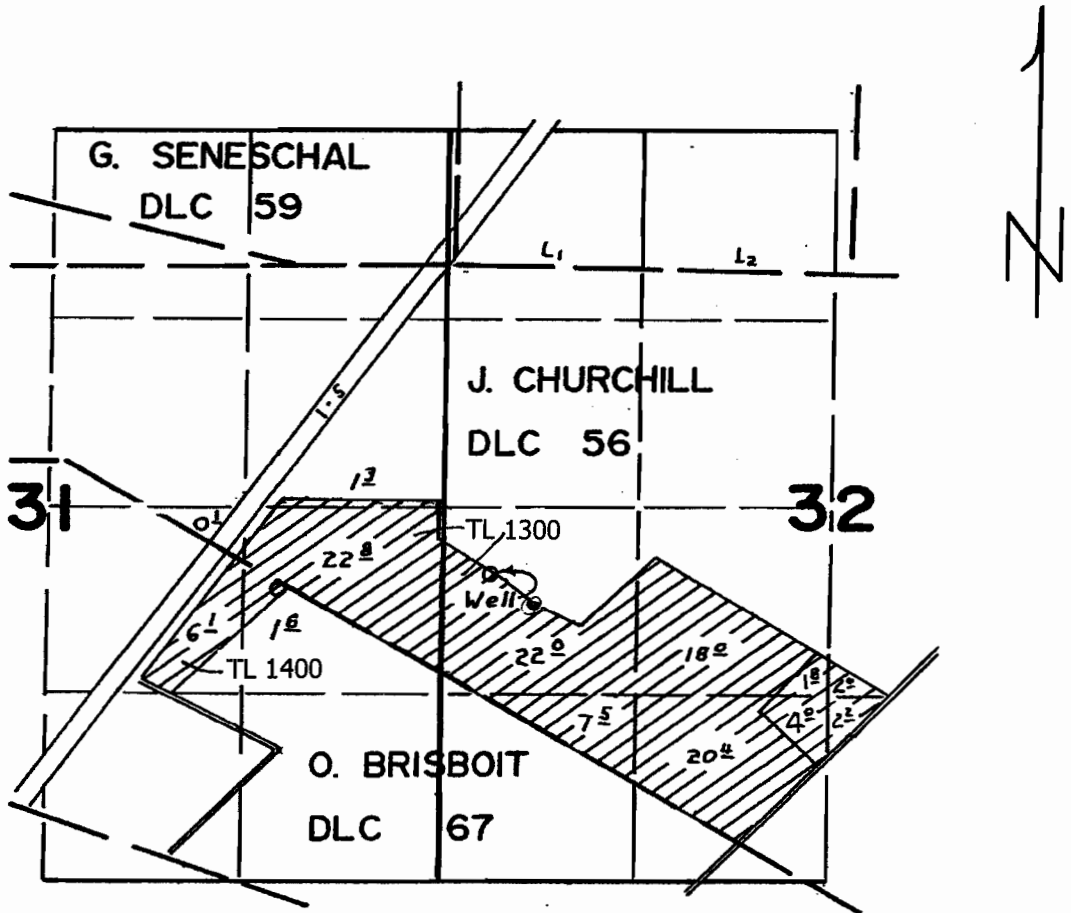


# T. 4 S. R. 1 W., W.M.



WELL: 460' South & 320' East  
from the West 1/4 Corner Section 32

**RECEIVED**

JUL 19 2004  
WATER RESOURCES DEPT  
SALEM, OREGON

Application Map for:

**BIZON NURSERY**

Application #: *G16277* Permit #:

Don Knauer Consulting  
P.O. Box 5416  
Salem, OR 97304

Scale 4" = 1 mile

**RECEIVED**

JUL 19 2004  
WATER RESOURCES DEPT  
SALEM, OREGON