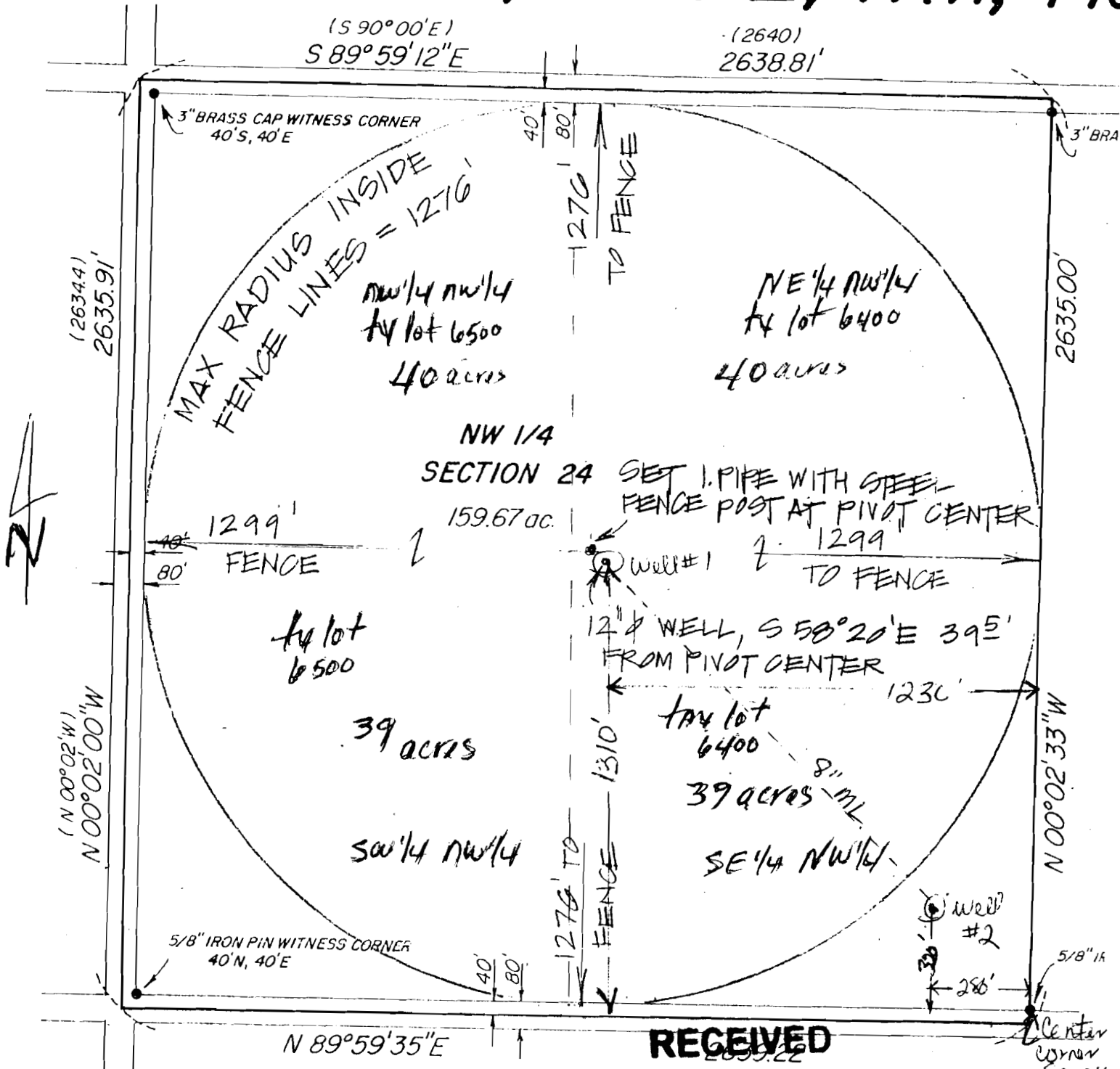


# T24S, R33E, WM, H



**RECEIVED**

NOV 05 2004

WATER RESOURCES DEPT  
SALEM, OREGON

**RECEIVED**

OCT 27 2004

WATER RESOURCES DEPT  
SALEM, OREGON

REGISTERED  
 PROFESSIONAL  
 LAND SURVEYOR  
 [Signature]  
 RENEW

1" = 400'

Application map for  
Jesse James Morlan

app # G 16335