

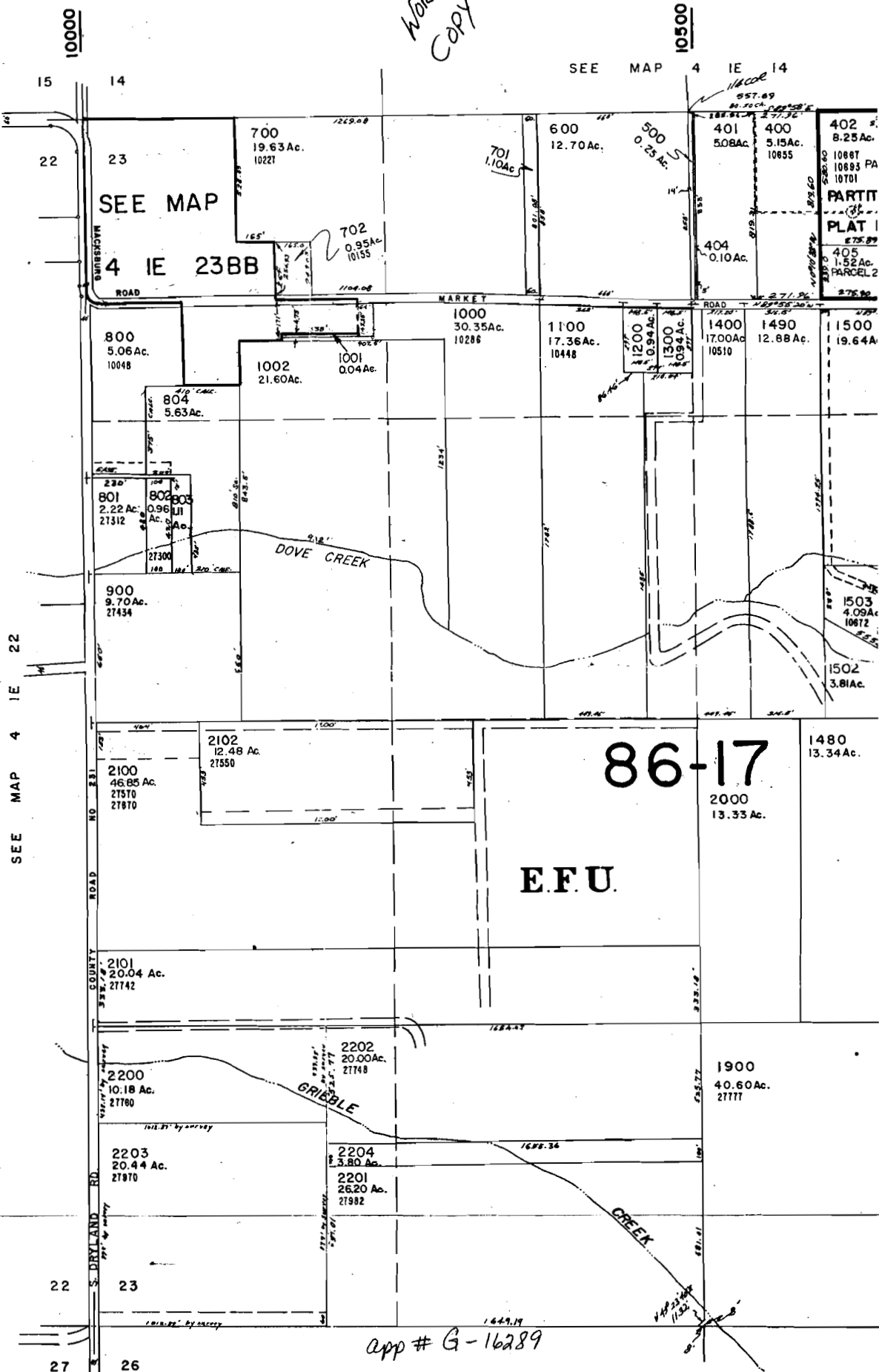
SECTION 23 T.4S. R.1E. W.M.

CLACKAMAS COUNTY

1" = 400'

This map was prepared for assessment purpose only.

Work Copy



app # G-16289

SECTION 23 T.4S. R.1E. W.M.

CLACKAMAS COUNTY

1" = 400'

Amended
5-11-05

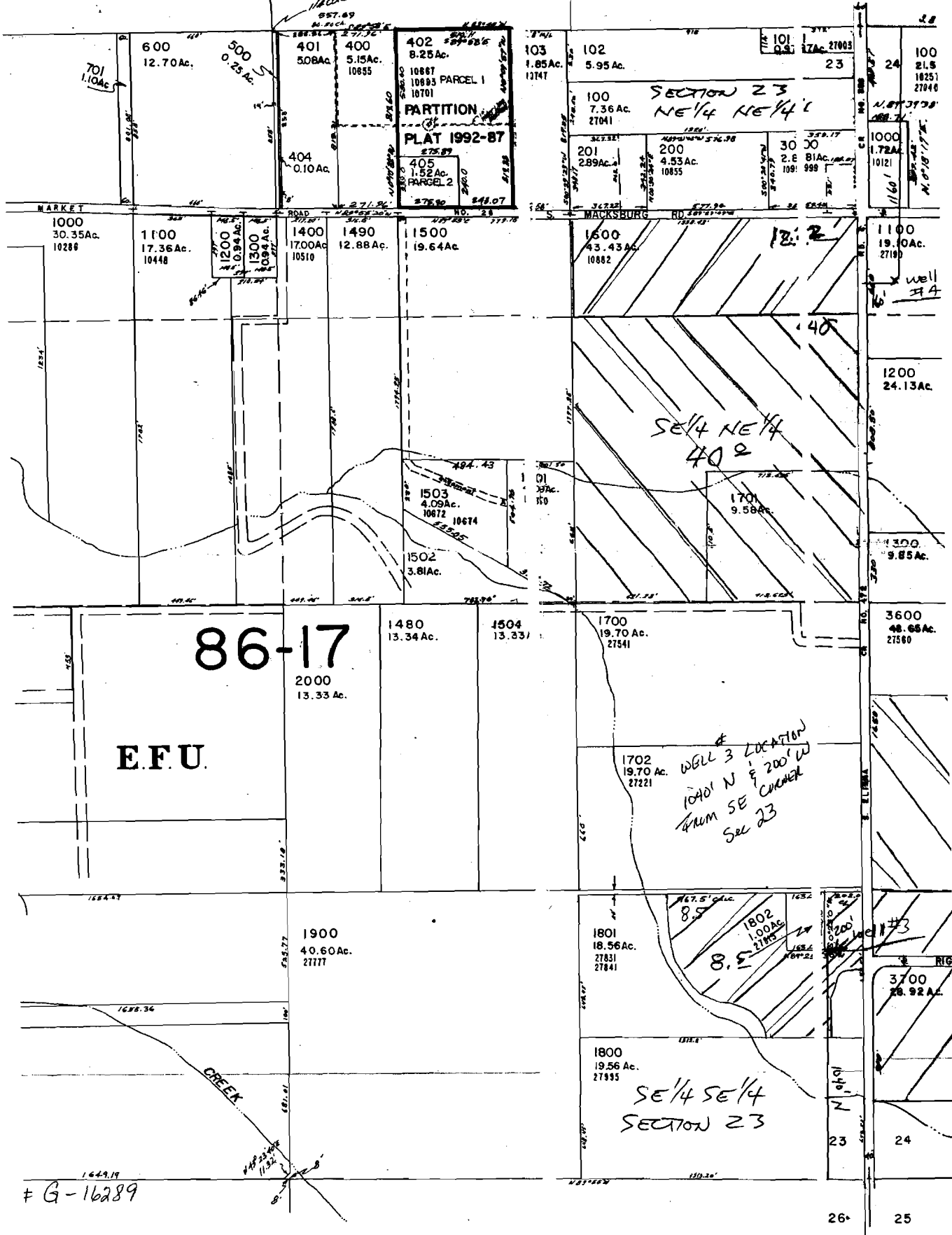
Work
Copy

RECEIVED

MAY 11 2005
WATER RESOURCES DEPT
SALEM, OREGON

SEE MAP 4 IE 14

14 13



G-16289

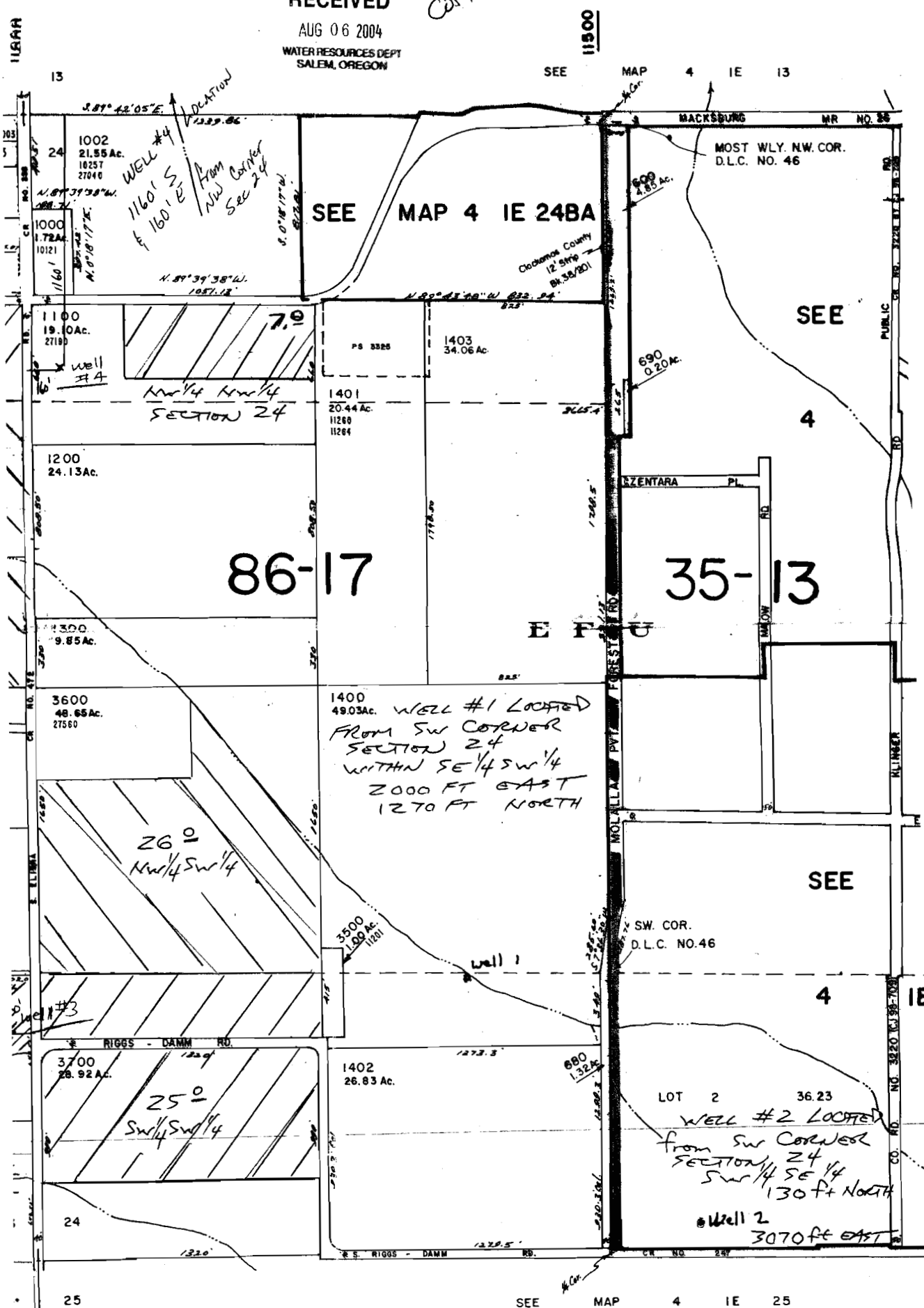
This map was prepared for assessment purpose only.

RECEIVED

AUG 06 2004

WATER RESOURCES DEPT
SALEM, OREGON

WORK COPY



11800

13

11500

SEE MAP 4 IE 13

BACKSBURG WR NO. 88

MOST WLY. NW. COR.
D.L.C. NO. 46

SEE MAP 4 IE 248A

SEE

86-17

35-13

E F U

SEE

SW. COR.
D.L.C. NO.46

4 IE

26⁰
NW 1/4 SW 1/4

25⁰
SW 1/4 SW 1/4

LOT 2 36.23
WELL #2 LOCATED
from SW CORNER
SECTION 24
SW 1/4 SE 1/4
130 ft NORTH

Well 2
3070 ft EAST

25

SEE MAP 4 IE 25