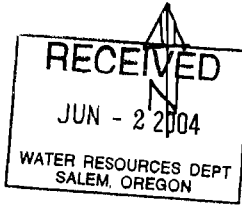


FINAL PROOF SURVEY

SITUATED IN THE SE 1/4 AND THE SW 1/4 SW 1/4 OF SECTION 35,
T38S, R10EWM, AND GOVERNMENT LOTS 1, 2, & 3
OF SECTION 2, T39S, R10EWM,
KLAMATH COUNTY, OREGON
SURVEYED: AUGUST 7, 2000

APPLICATION #G-13430

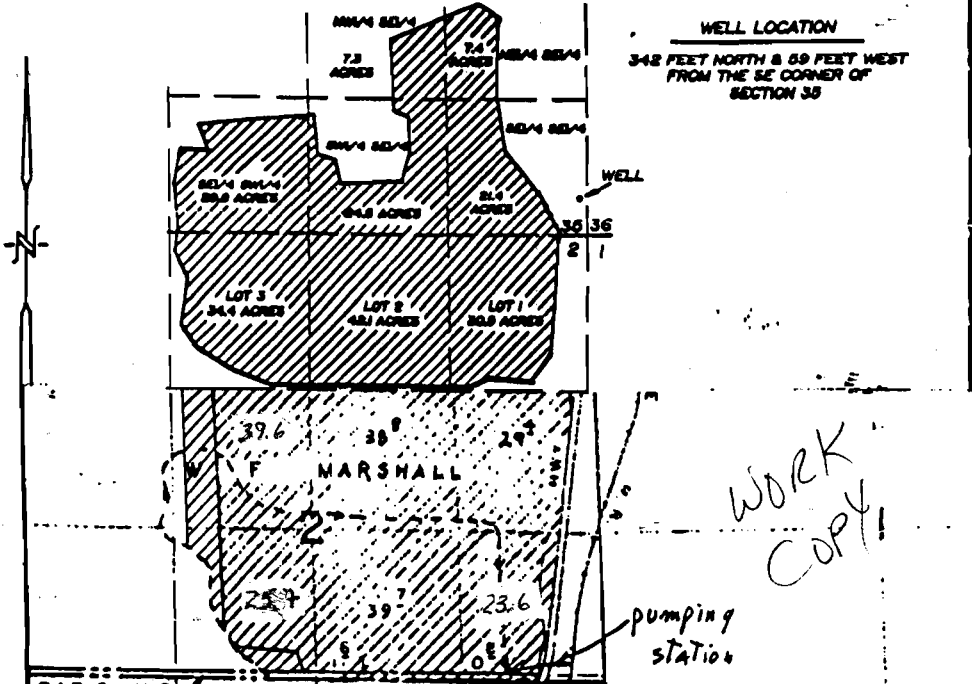
PERMIT #G-12787



MAP PREPARED FOR
GLENN LORENZ
BAR C-L INC.
MAP "B"

WORK COPY

MAP PREPARED FROM
MAP TO ACCOMPANY
WATER RIGHT APPLICATION
FIELD SURVEY



WORK COPY

THE PLACE OF USE IS LOCATED AS FOLLOWS:

D. P.

Township 39 South
Range 10 East, W.M.
Sec 2

- SE 1/4 NE 1/4
- SW 1/4 NE 1/4
- SE 1/4 NW 1/4
- NE 1/4 SW 1/4
- NE 1/4 SE 1/4
- NW 1/4 SE 1/4

S:

