

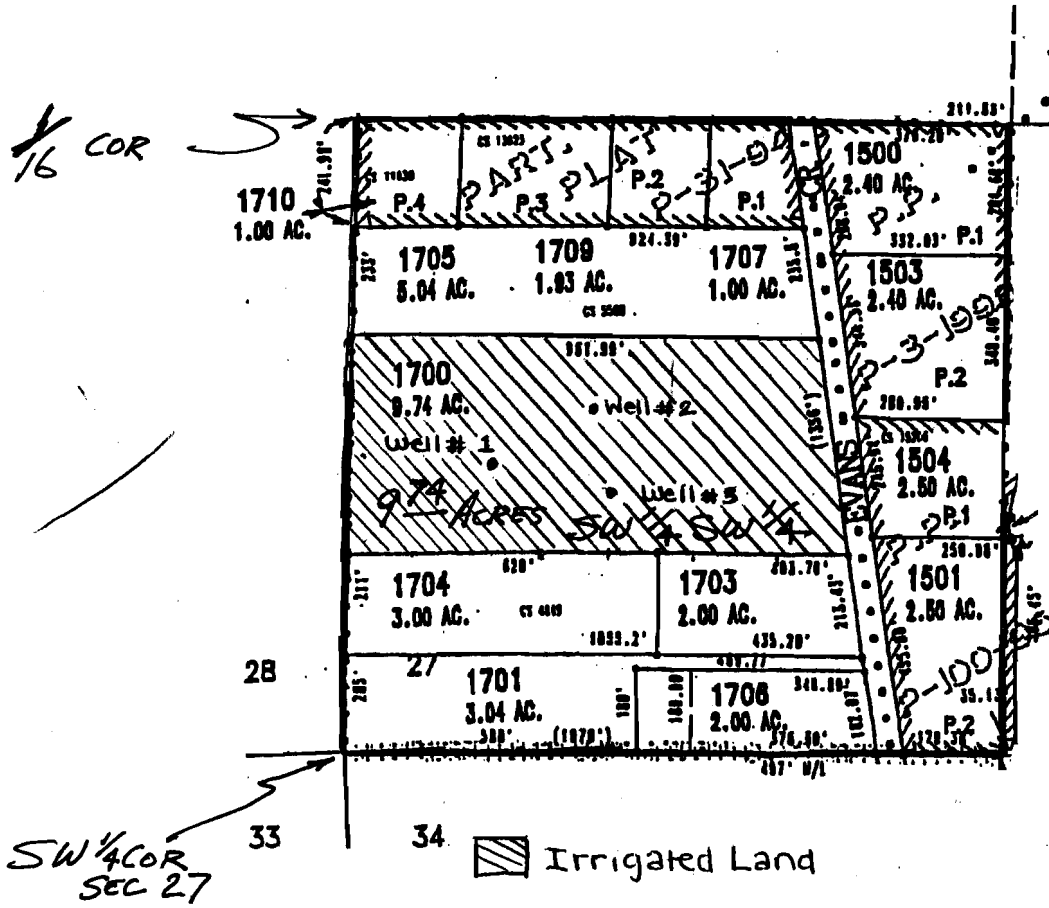
Ground Water Application Map AD Homes

T 35S R 4W S 27
SW 1/4 SW 1/4
Irrigated Land = 9.74 acres

RECEIVED

SEP 07 2004

WATER RESOURCES DEPT
SALEM, OREGON



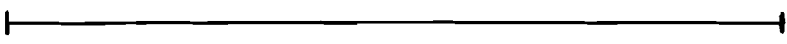
RECEIVED

NOV 04 2004

WATER RESOURCES DEPT
SALEM, OREGON

- Well 1: Located 616' N and 300' E of the SW corner of Section 27
- Well 2: Located 716' N and 500' E of the SW corner of Section 27
- Well 3: Located 548' N and 532' E of the SW corner of Section 27

4 inches = 1,600 feet 1 inch = 400 feet



app # G 16333