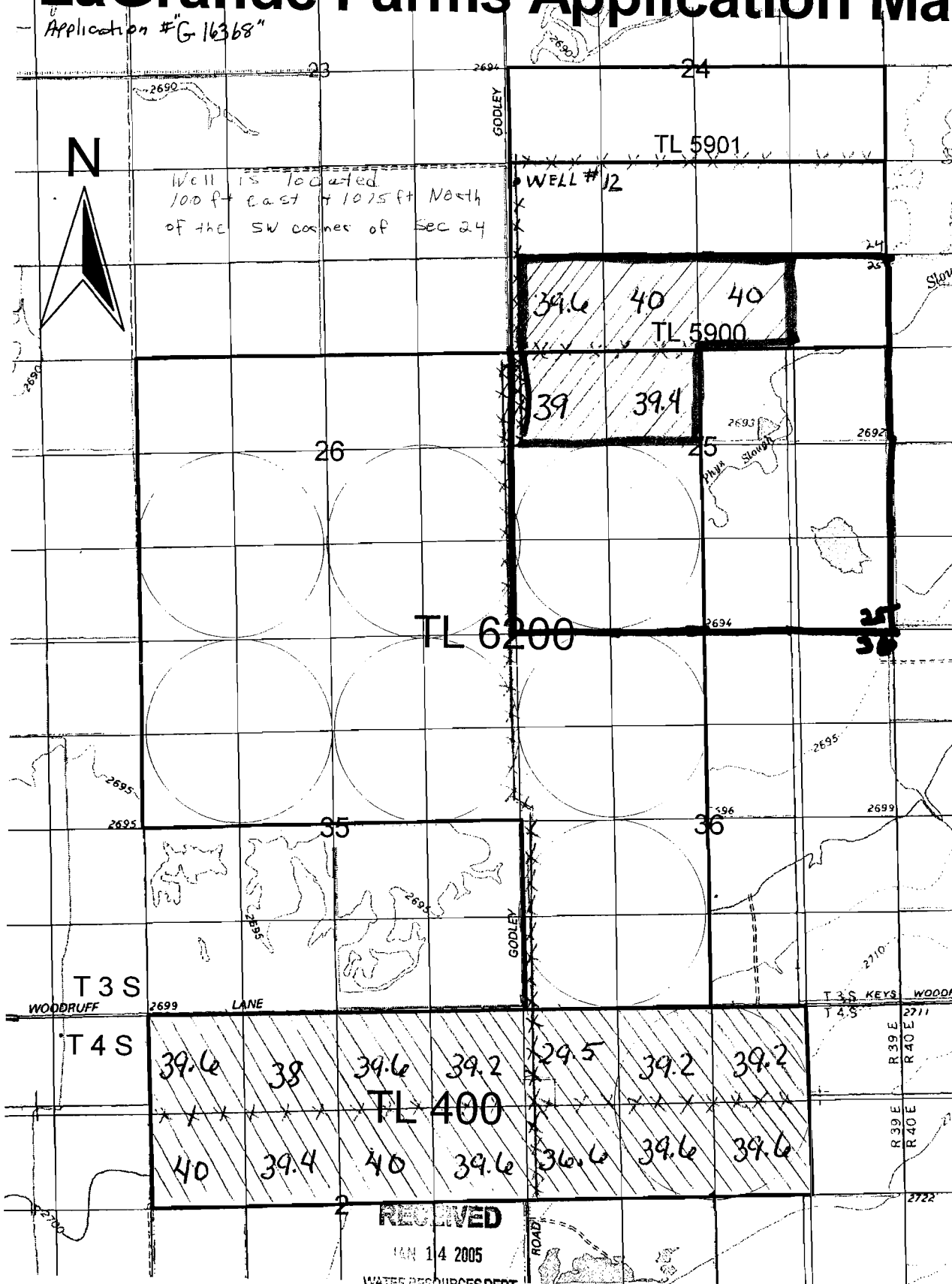


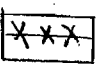


Work Copy T3S 39E 25
 Union County T4S 39E 142
LaGrande Farms Application Ma

Application # "G 16368"



-  Primary
-  Supplemental
-  MAIN LINE PIPE

RECEIVED
 JAN 14 2005
 WATER RESOURCES DEPT
 SALEM, OREGON

WELL #12 45.28537326° LATITUDE
 -117.89086031° LONGITUDE
 app # G 16368

Scale 1" = 1320