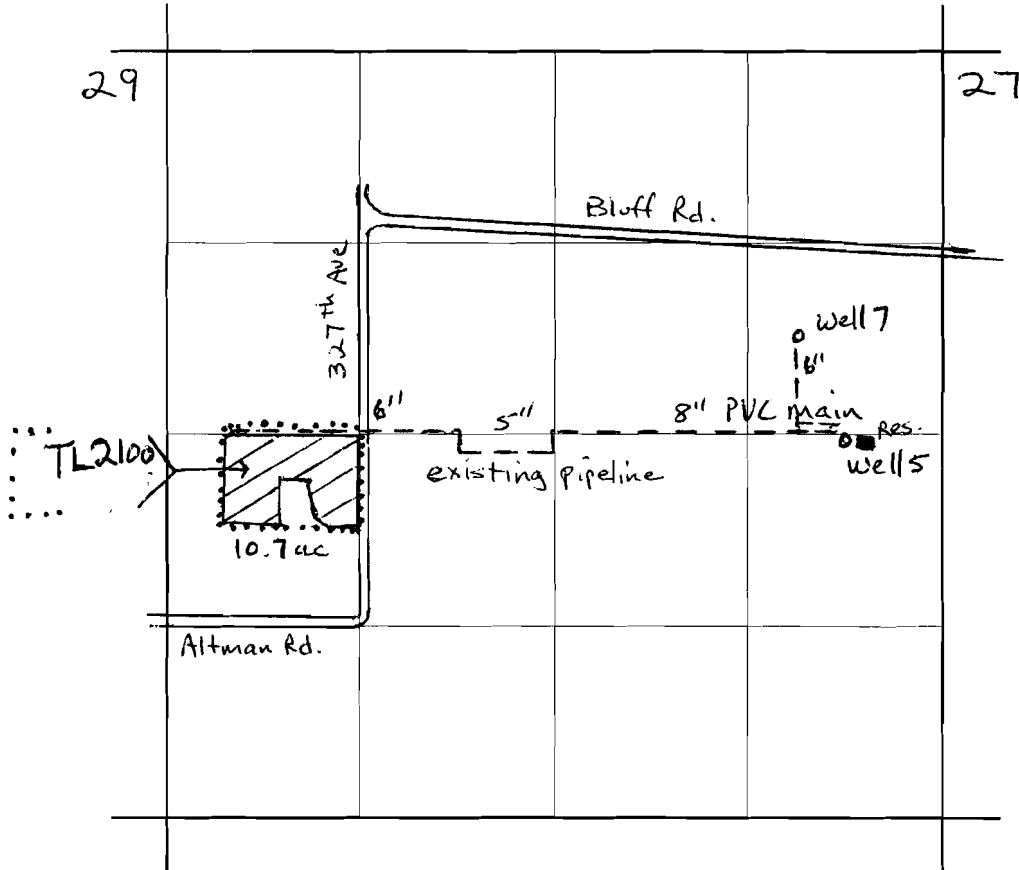


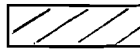
T. 1 S., R. 4 E., W.M.
Section 28



RECEIVED

FEB 14 2005

WATER RESOURCES DEPT
SALEM, OREGON

 Nursery operations

Scale: 1" = 1320'

Groundwater application for

J. Frank Schmidt & Son Co.



Well 5 is 2600' N. and 580' W. of SE corner of Section 28

Well 7 is 3350' N. and 820' W. of SE corner of Section 28

app # G 16391