

Clackamas County

FILED NOS
2000

Rhoads Rhody Ranch

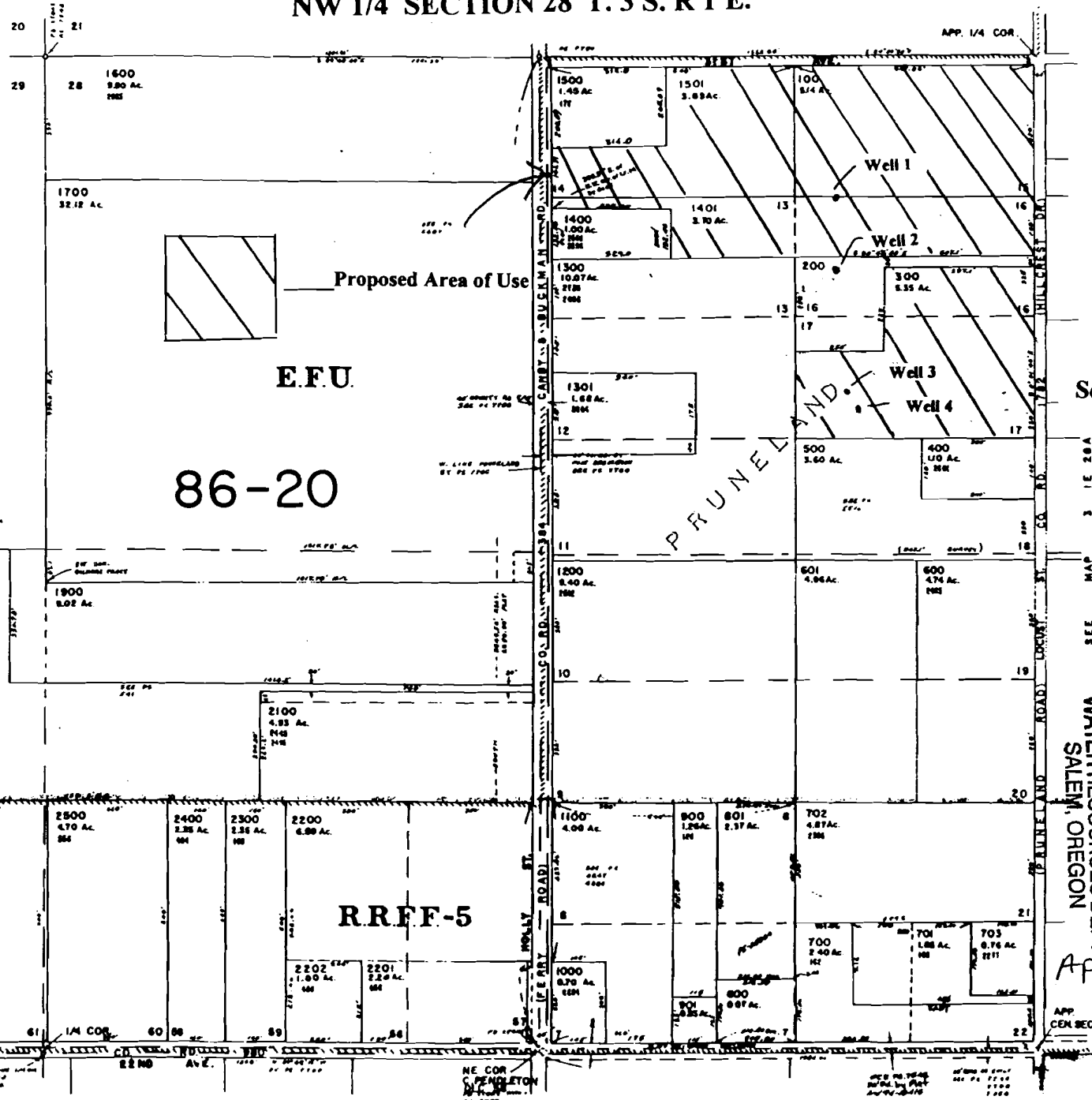
17.88 Acres in the
NE 1/4, NW 1/4 Sec. 28 T. 3 S. R 1 E.

- TL 100 - 5.14 Ac
- TL 300 - 5.35 Ac
- TL 1401 - 3.70 Ac
- TL 1501 - 3.69 Ac

POA Locations From the
NE Corner of the NW 1/4:

- 1 - 375' S & 528' W
- 2 - 550' S & 575' W
- 3 - 850' S & 514' W
- 4 - 870' S & 465' W

NW 1/4 SECTION 28 T. 3 S. R 1 E.



Scale: 1" = 400'

RECEIVED

MAY 23 2005

WATER RESOURCES DEPT
SALEM, OREGON

APP NOG-16165