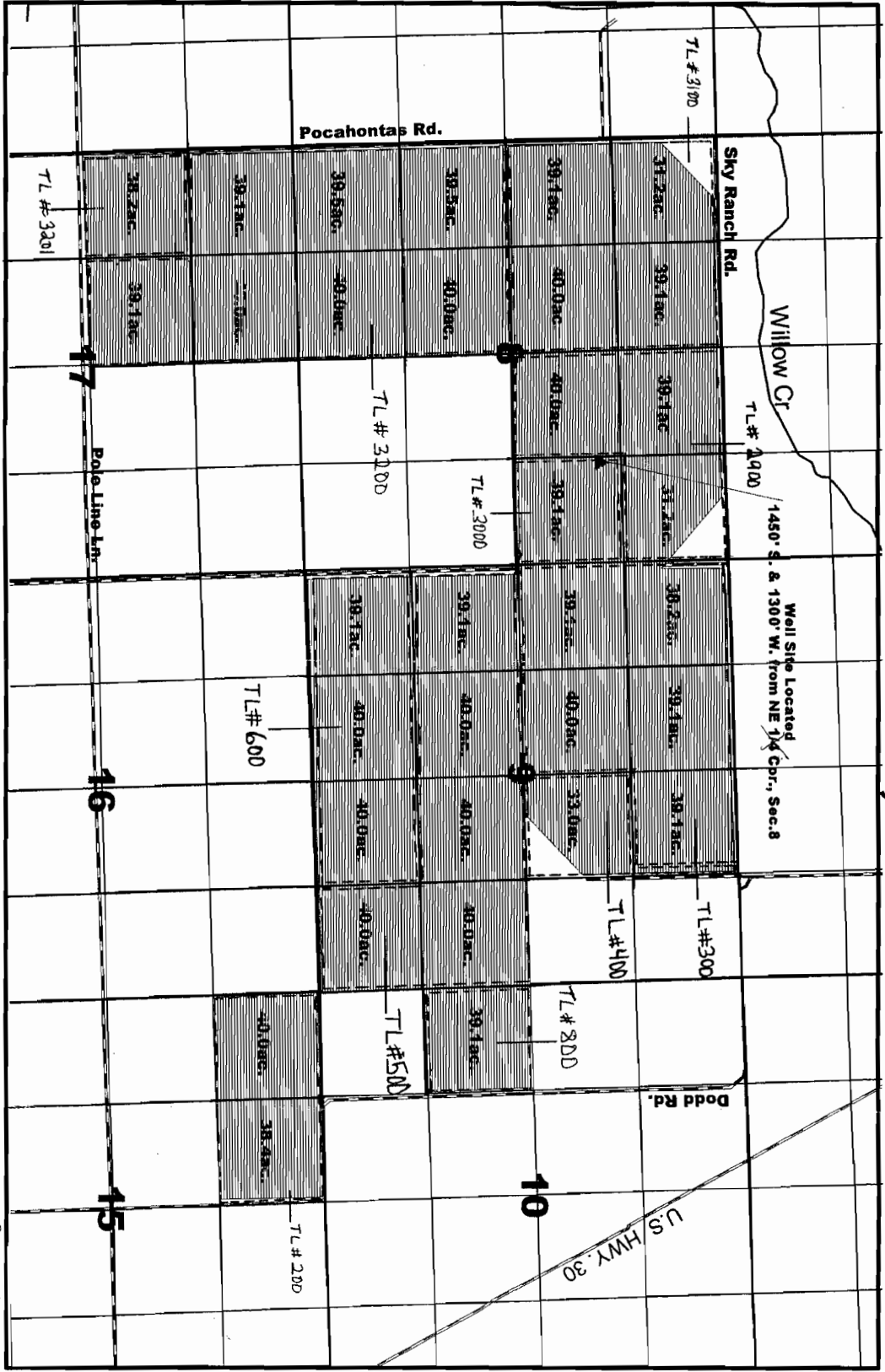


T. 8 S. R. 39 E., W.M.



RECEIVED
 JAN 9 2005
 WATER RESOURCES DEPT
 SALEM, OREGON

Supplemental Irrigation From Well

MAP TO ACCOMPANY APPLICATION FOR GROUND WATER

Applicants: Brad & June Allen
 December, 2004

app # G-16360

1" = 1320'

