

WILLAMETTANS ORGANAZATIONAL CAMP

EXISTING UTILITIES

LEGEND:

EXISTING WATER

NOTES

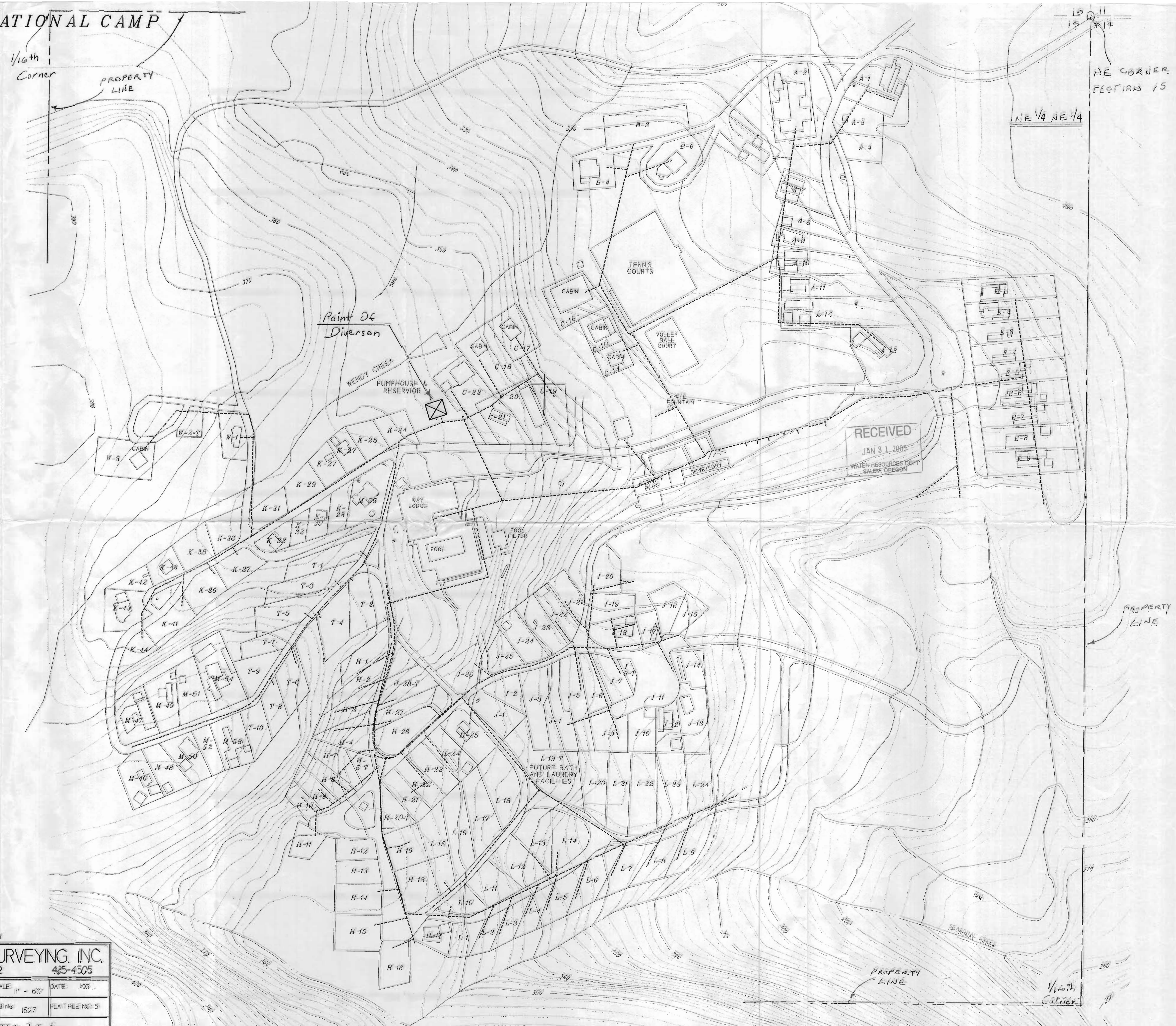
1. Point of Diversion is 524' south and 875' west of NE Corner of Section 15.
2. Entire site is within 1/16 section (NE 1/4 of NE 1/4). Approximately 5 acres are irrigated throughout park (small yards, open areas, etc)



1" = 60'

WATER RIGHTS APPLICATION
January 28, 2005

APPLIC #
G - 16379
PERMIT #
G - 16015



1527.qcd



DESIGNED: DBM	POAGE ENGINEERING & SURVEYING, INC.	
DRAWN: DBM	P.O. BOX 2527 EUGENE, OR 97402 485-4505	
REVISED: JULY 15, 1993	PROJECT: WILLAMETTANS	SCALE: 1" = 60' DATE: 1/93
AS BUILT 12-26-95 JI MASSA	LOCATION: NE 1/4 OF THE 1/4 OF SEC. 15 T.16S. R.2W. W.M.	UCB No: 1527 PLAT FILE NO: 5
LLG 3-96 WATER DUB 8/04		SHEET No 2 OF 5

1/16th Corner