

7000

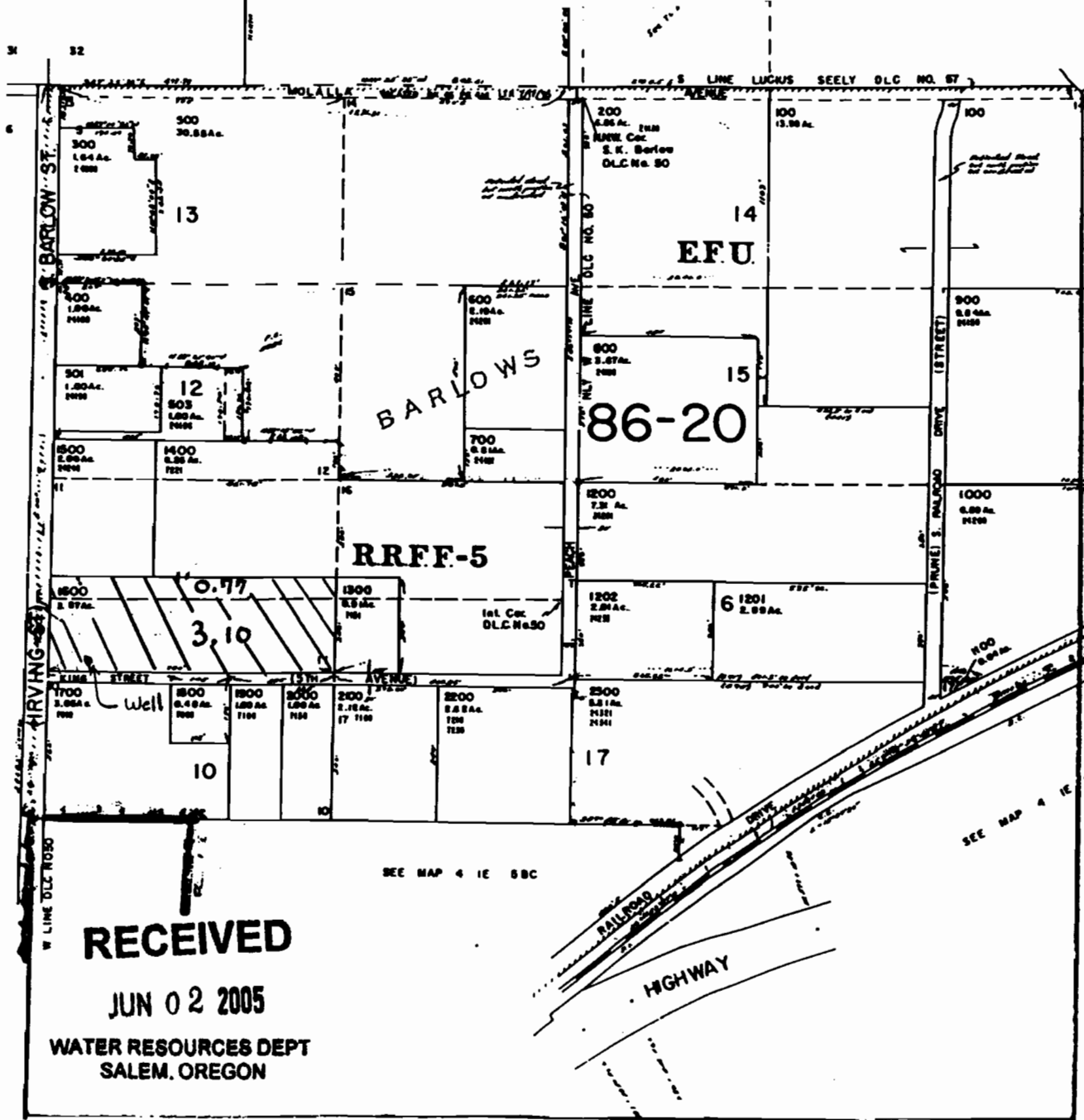
7300

7600

CANCELLED T.L.S. 302

# T. 4 S., R 1 E., SECTION 5, NW 1/4

## CLACKAMAS COUNTY WILLAMETTE BASIN



Sean & Barbara McVicker

POA Location:

1440' S. and 150' E.

From NW 1/4, T. 4S., R. 1 E.,

Section 5

Irrigated acres:

0.77 NW 1/4, NW 1/4

3.10 SW 1/4, NW 1/4

T. 4 S., R. 1 E., Sec. 5

Tax Lot: 1600

apno  
G-16476

Scale: 1" = 400'

RECEIVED  
OVER THE COUNTER

**RECEIVED**

JUN 02 2005

WATER RESOURCES DEPT  
SALEM, OREGON