

THIS MAP WAS PREPARED FOR
ASSESSMENT PURPOSE ONLY

SECTION II T4S R4W W.M.
YAMHILL COUNTY

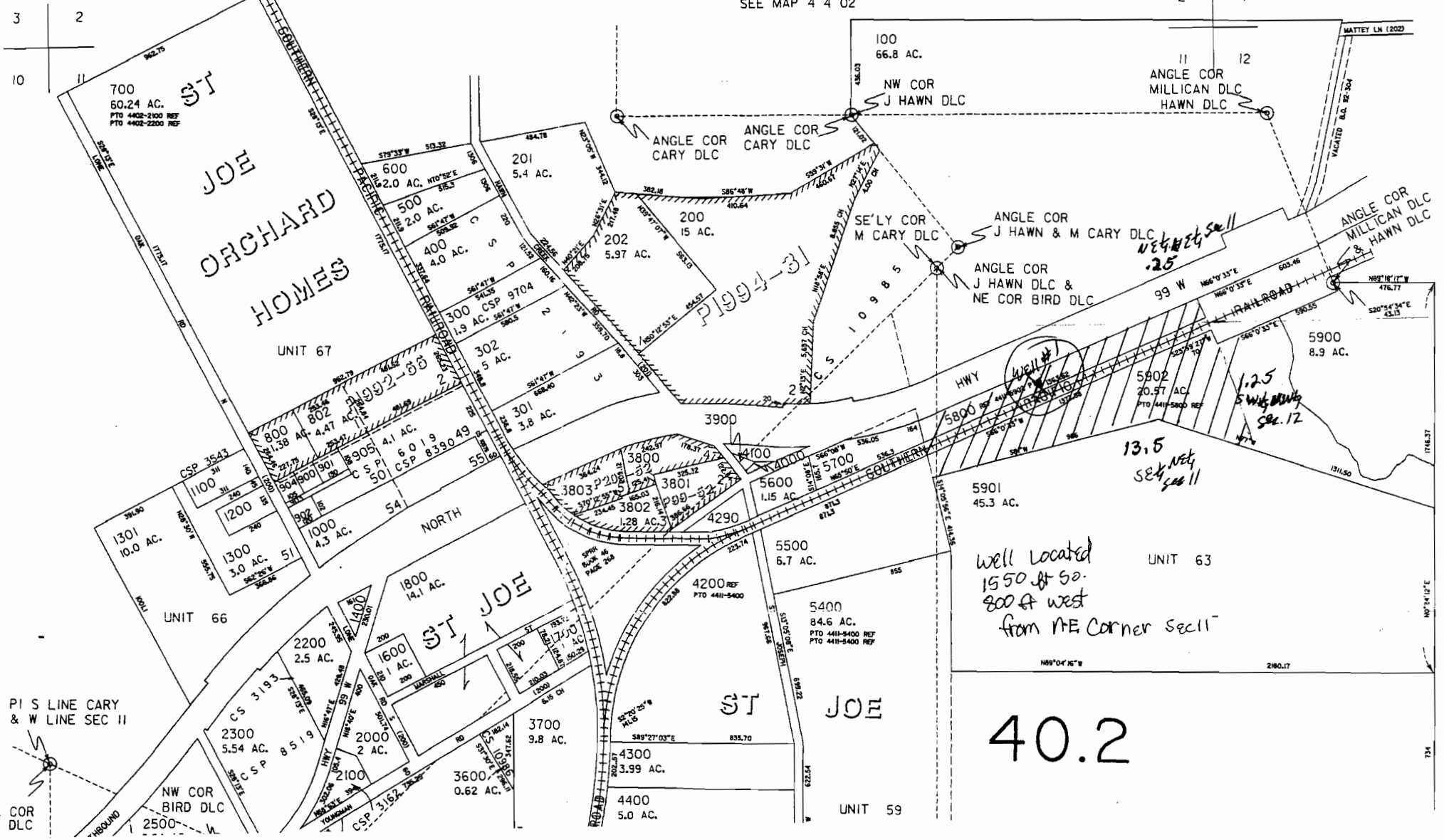
1" = 400'

APP # G 16469
Per # G

RECEIVED
MAY 25 2005
WATER RESOURCES DEPT
SALEM, OREGON

FI

SEE MAP 4 4 02



40.2