

APPLICATION MAP IN THE NAME OF

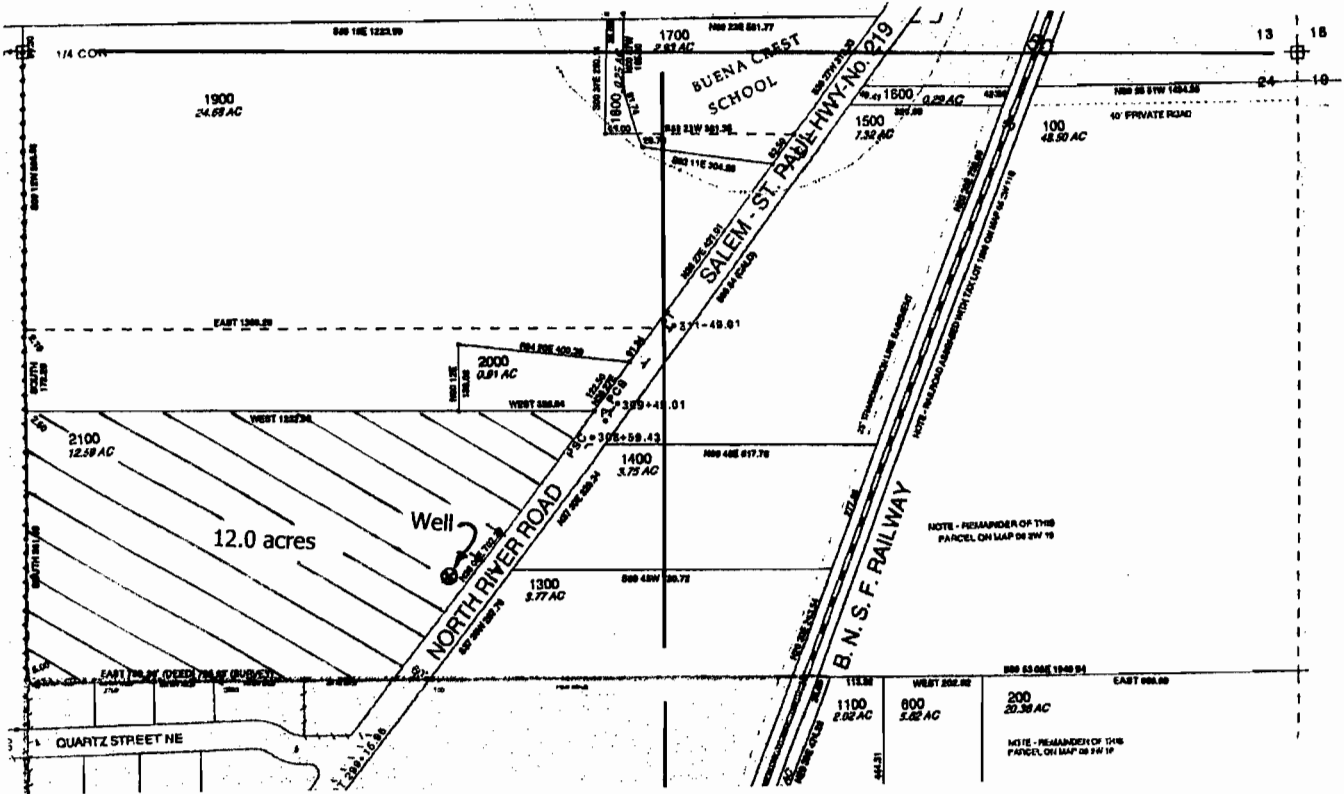
John P. W. Zielinski

T 6 S R 3 W, W.M.
NW 1/4 NE 1/4 Section 24

RECEIVED

MAR 11 2005

WATER RESOURCES DEPT
SALEM, OREGON



Well: 1085' S & 865' E of the N 1/4 corner Section 24

scale 1" = 400'



Don Knauer Consulting
PO Box 5416
Salem, OR 97304
503-585-8474

app # G16408