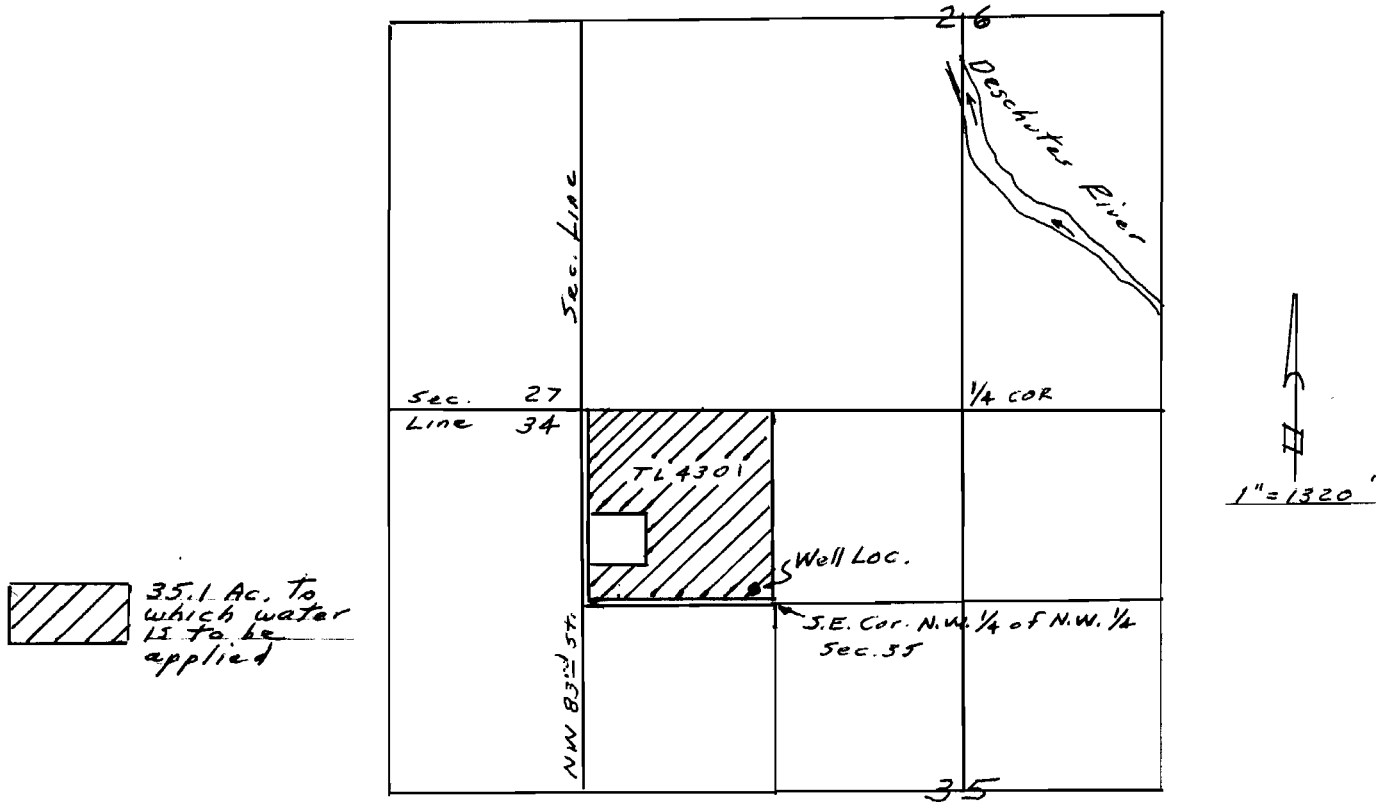


MAP FOR GROUND WATER PERMIT
 APPLICATION SUBMITTED BY GRANT D.
 AND JACQUELINE FLEMING - N.W. 1/4 of N.W. 1/4
 OF SEC. 35, T14S, R12W, W.M. (T.L. 4301)
 E



Well Location:
 35' N, 100' W of S.E. Cor.
 N.W. 1/4 of N.W. 1/4 Sec. 35,
 T. 14S, R. 12E, W.M.

app # G-16367

RECEIVED
 JAN 11 2005
 WATER RESOURCES DEPT
 SALEM, OREGON