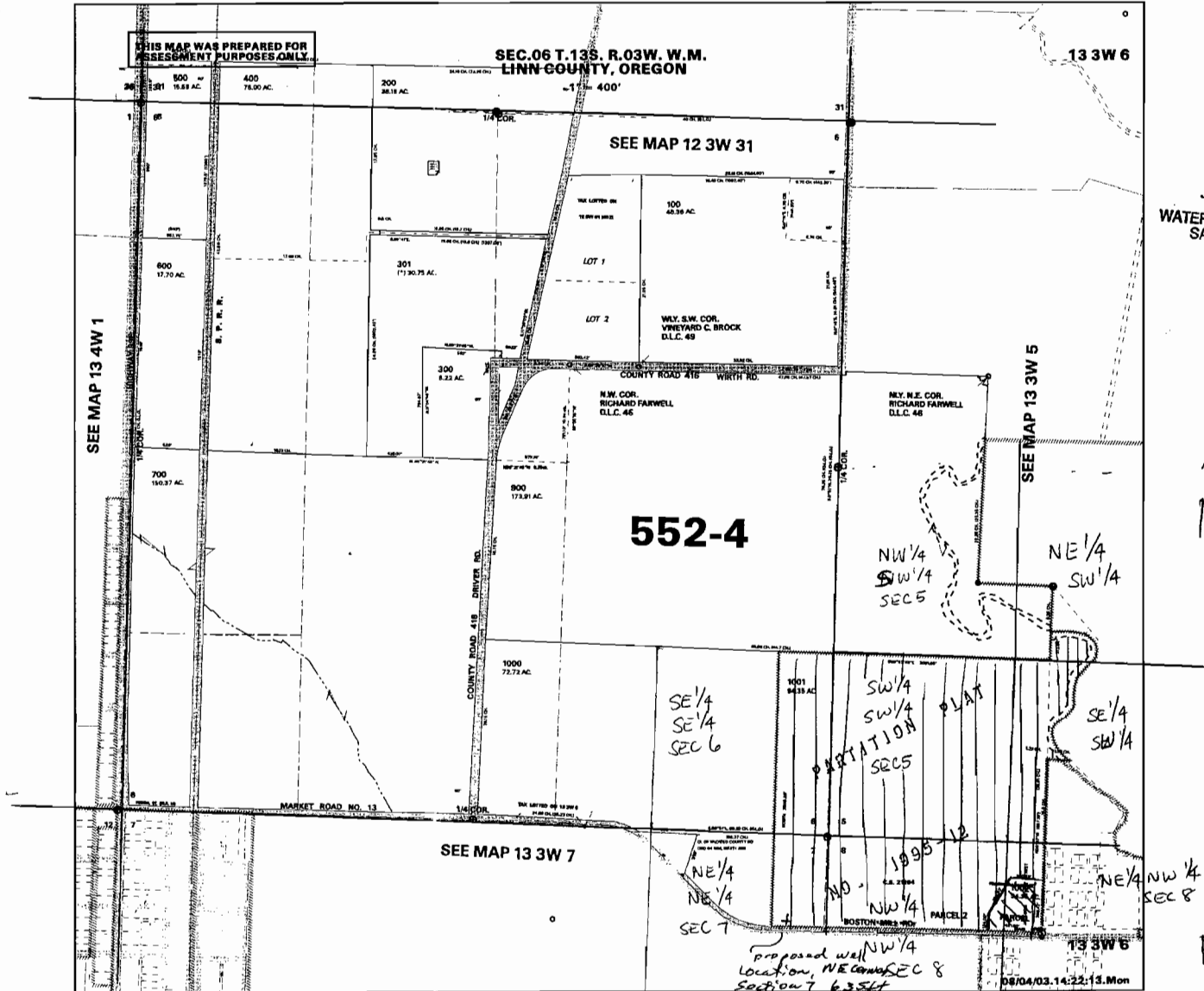


Approx SCALE 1" = 800 FEET

THIS MAP WAS PREPARED FOR ASSESSMENT PURPOSES ONLY.

SEC.06 T.13S. R.03W. W.M. LINN COUNTY, OREGON

13 3W 6



RECEIVED

JUL 05 2005

WATER RESOURCES DEPT SALEM, OREGON

NESW 1 ac.
 NWSW
 SW SW 40.0 ac
 SE SW 6.2 ac

SECS

SESE 16.2 ac

SEC 6

NENE 8.3 ac

SECT

NENW 3.1 ac
 NWNW - 19.2 ac

SEC 8

SE 1/4
SE 1/4
SEC 6

SW 1/4
SW 1/4
SEC 5

SE 1/4
SW 1/4

NE 1/4
NE 1/4
SEC 7

NE 1/4 NW 1/4
SEC 8

Proposed well NW 1/4
 Location, NE corner SEC 8
 Section 7 635ft
 South & 288ft West.

parcels out.

Appl. G-16452