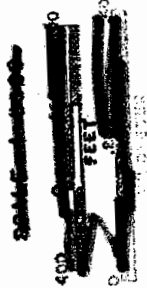


SECTION 08 T.41S. R.11E. W.M.
KLAMATH COUNTY

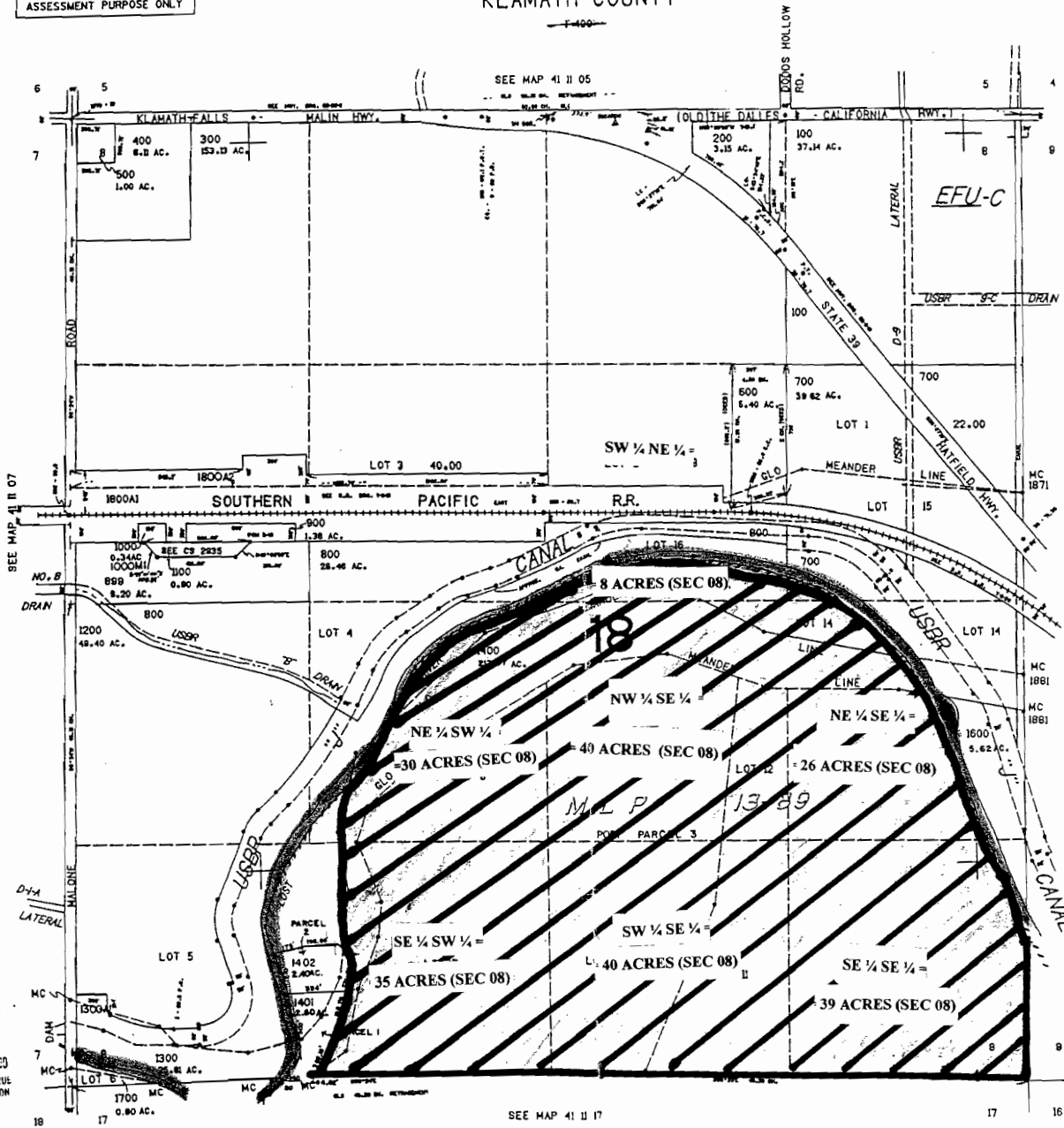
41 11 08

THIS MAP WAS PREPARED FOR
ASSESSMENT PURPOSE ONLY



ditches / canal

WORK
COPY
1" = 600 ft



tax lot#

- 4111-00800-01400
- 4111-00800-01500
- 4111-00800-01700

SW-NE	8	Ac
SE NE	1	✓
NW-SW	0	Ac
NE SW	30	✓
SW SW	0	✓
SE SW	35	✓
NW SE	40	Ac
NE SE	26	✓
SW-SE	40	✓
SE SE	39	✓

Proposed well #1
cated 1/4 mile N of
SW corner of Section 17

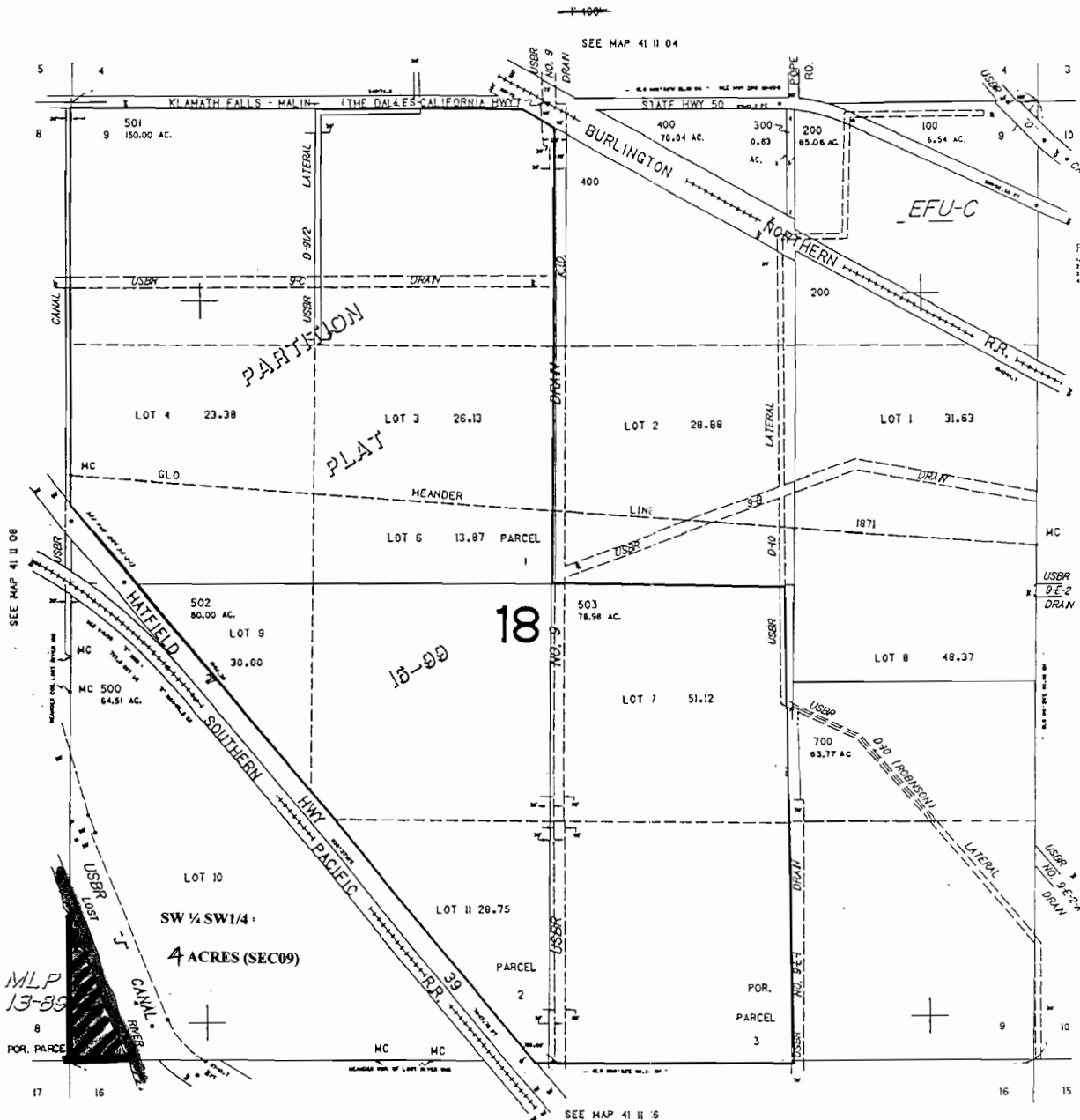
RECEIVED
NOV 13 2005
DEPT. OF REVENUE
STATE OF OREGON

app no G-14531

219
RECEIVED
SEP 08 2005
WATER RESOURCES DEPT
SALEM, OREGON

RECEIVED
AUG 24 2005
WATER RESOURCES DEPT
SALEM, OREGON

41 11 09



tax lot #
4111-00900-00600

SW 1/4 SW 1/4
4 ~~336~~ Ac of 40 Ac

WORK COPY

Revised APPROX SCALE
1" = 600 FT.

RECEIVED
SEP 08 2005
WATER RESOURCES DEPT
SALEM, OREGON

RECEIVED
AUG 24 2005
WATER RESOURCES DEPT
SALEM, OREGON

Proposed well #1
located 1/4 mile
N of SW corner
section 17

MLP
13-89

MAY 01 2003
STATE OF OREGON

APP NO 6-165,21

41 11 09

N
↑

ASSESSMENT PURPOSE ONLY

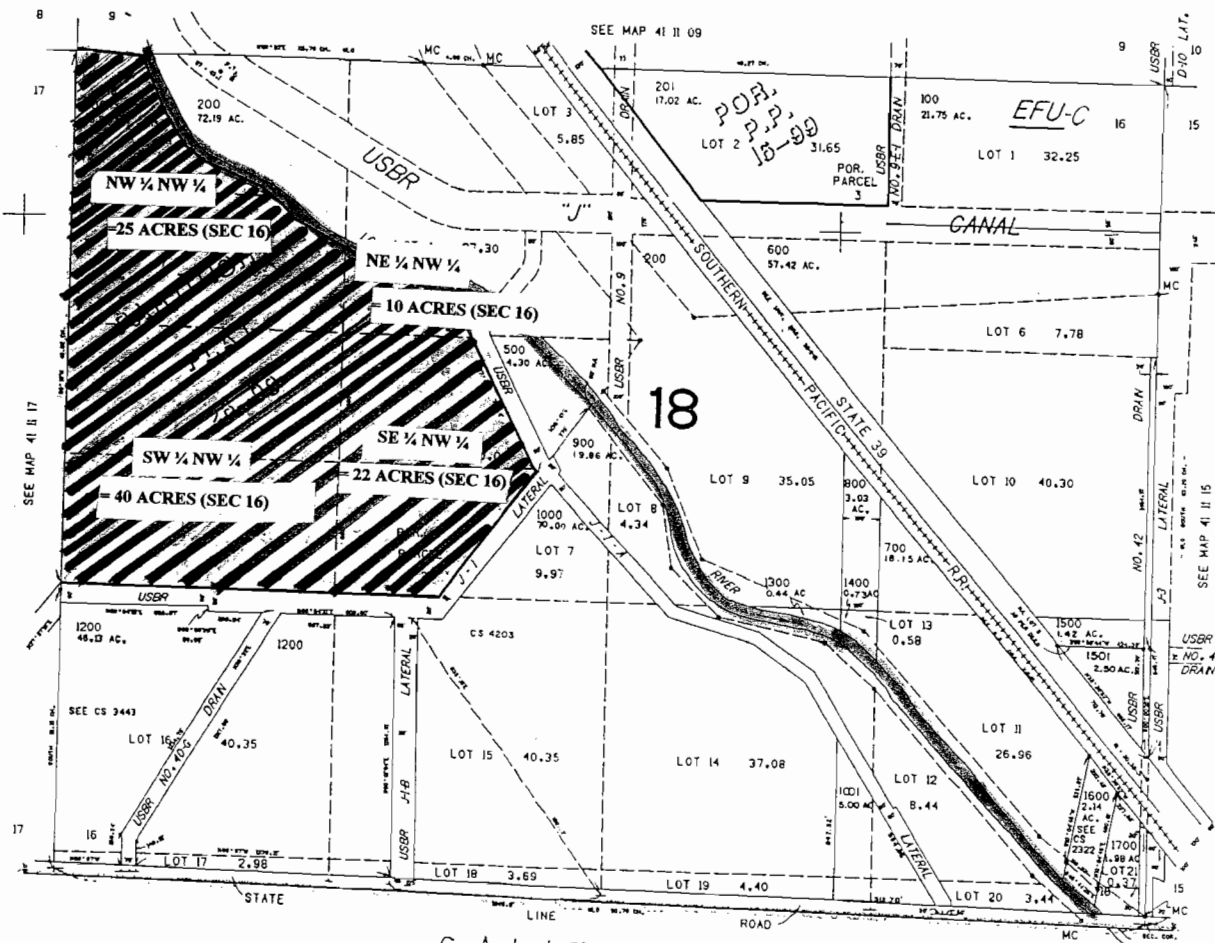
SECTION 10 T.41S. R.1E. W.M.
KLAMATH COUNTY

41 11 16



ditches/canal

WORK
COPY



CANCELLED NO.

300
1100

Tax lot #

4111-01600-00400
4111-01600-00100

NW NW 25 Ac.
NE NW 10 Ac
SW NW 40 Ac
SE NW 22 Ac

97

proposed well #1
located 1/4 mile N of
SW corner of section 17

RECEIVED
MAY 01 2003
DEPT. OF REVENUE
STATE OF OREGON

REVISED APPROX SCALE
Scale = 1" = 500'

CALIFORNIA

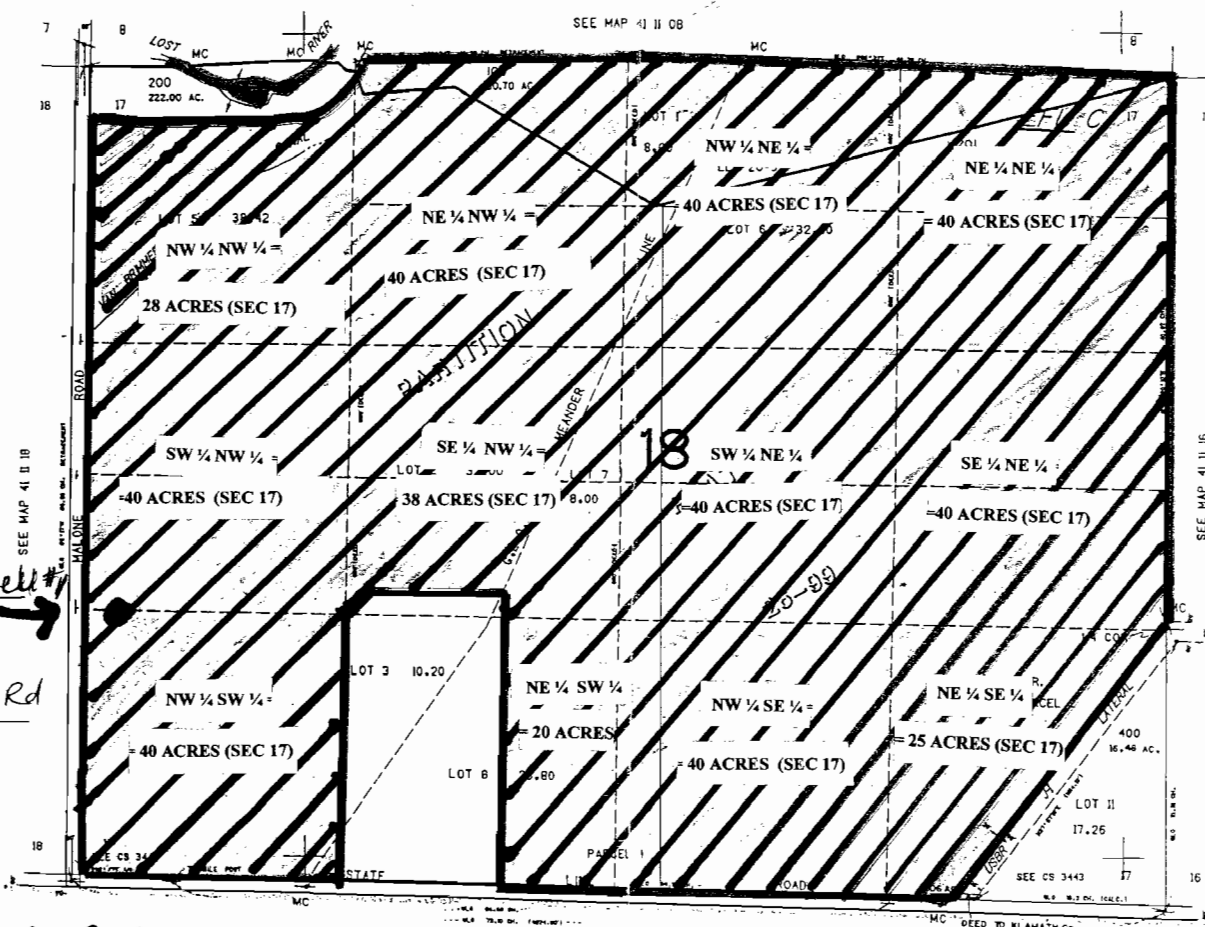
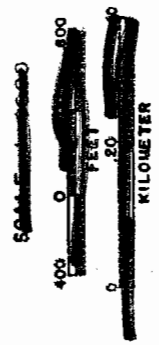
RECEIVED
SEP 08 2005
WATER RESOURCES DEPT
SALEM, OREGON

RECEIVED
AUG 24 2005
WATER RESOURCES DEPT
SALEM, OREGON

200 No G-14531

17,000

122,000



ditches

Well #1
100ft. E of Malone Rd
1/4 mi. N of Stateline Rd
SW Corner of Section 17

proposed Well #1
POD

CANCELLED NO.
300

Tax lot #
4111-1700-00100
4111-1700-00200
4111-1700-00201

NW NW	28	Ac
NE NW	40	✓
SW NW	40	✓
SE NW	38	✓
NW NE	40	Ac.
NE NE	40	✓
SW NE	40	✓
SE NE	40	✓
NW - SW	40	Ac
NE SW	20	✓
NW SE	40	✓
NE SE	25	✓

WORK COPY

CALIFORNIA

RECEIVED
SEP 08 2005
WATER RESOURCES DEPT
SALEM, OREGON

RECEIVED
AUG 24 2005
WATER RESOURCES DEPT
SALEM, OREGON

431 Ac

REVISED APPROX. SCALE
Scale 1" = 600'

REGISTERED
MAY 01 2003
DIV. OF REVENUE
STATE OF OREGON

000006-11.521

000