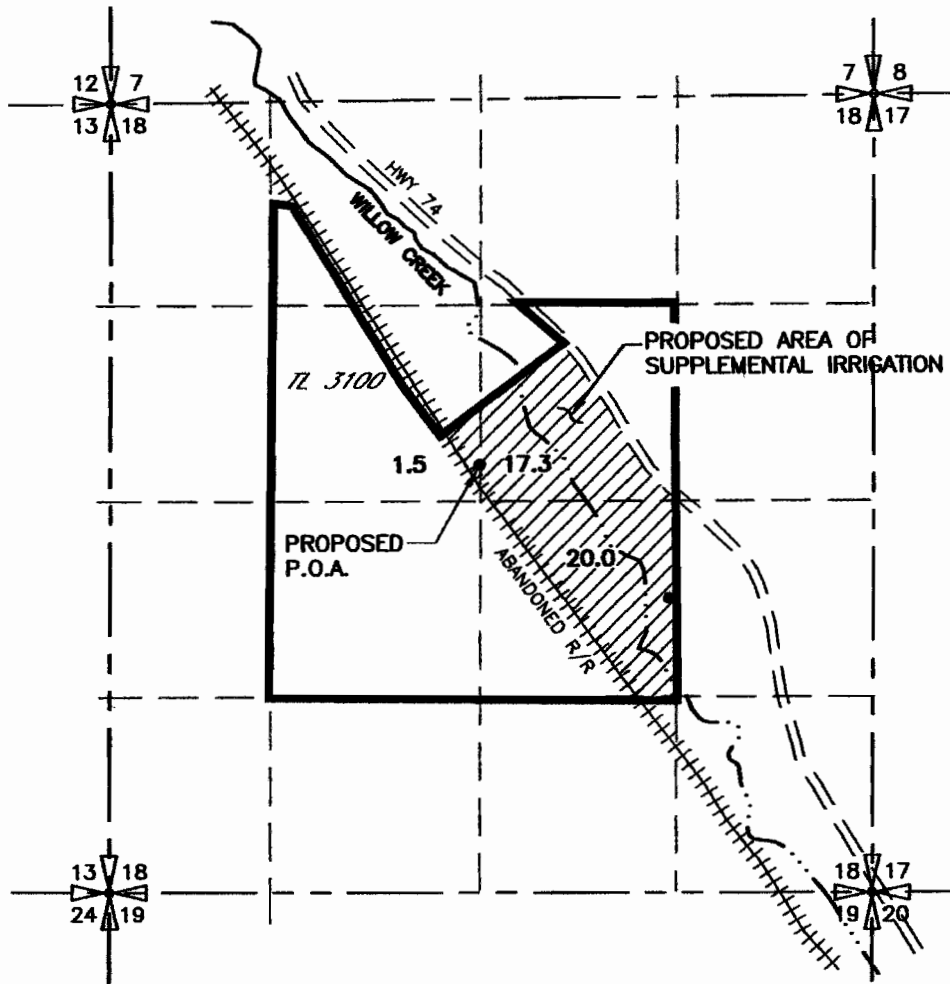
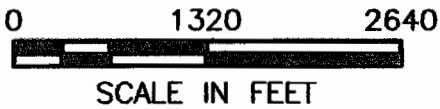


**AMENDED DECEMBER 19, 2005
GROUND WATER RIGHT
APPLICATION MAP G-16508
FOR FRANK REA
T1S, R25E WM**



PROPOSED P.O.A.
WELL LOCATED 250'N FROM THE
CENTER OF SEC 18



NOTE:

RECEIVED

DEC 23 2005

WATER RESOURCES DEPT
SALEM, OREGON

