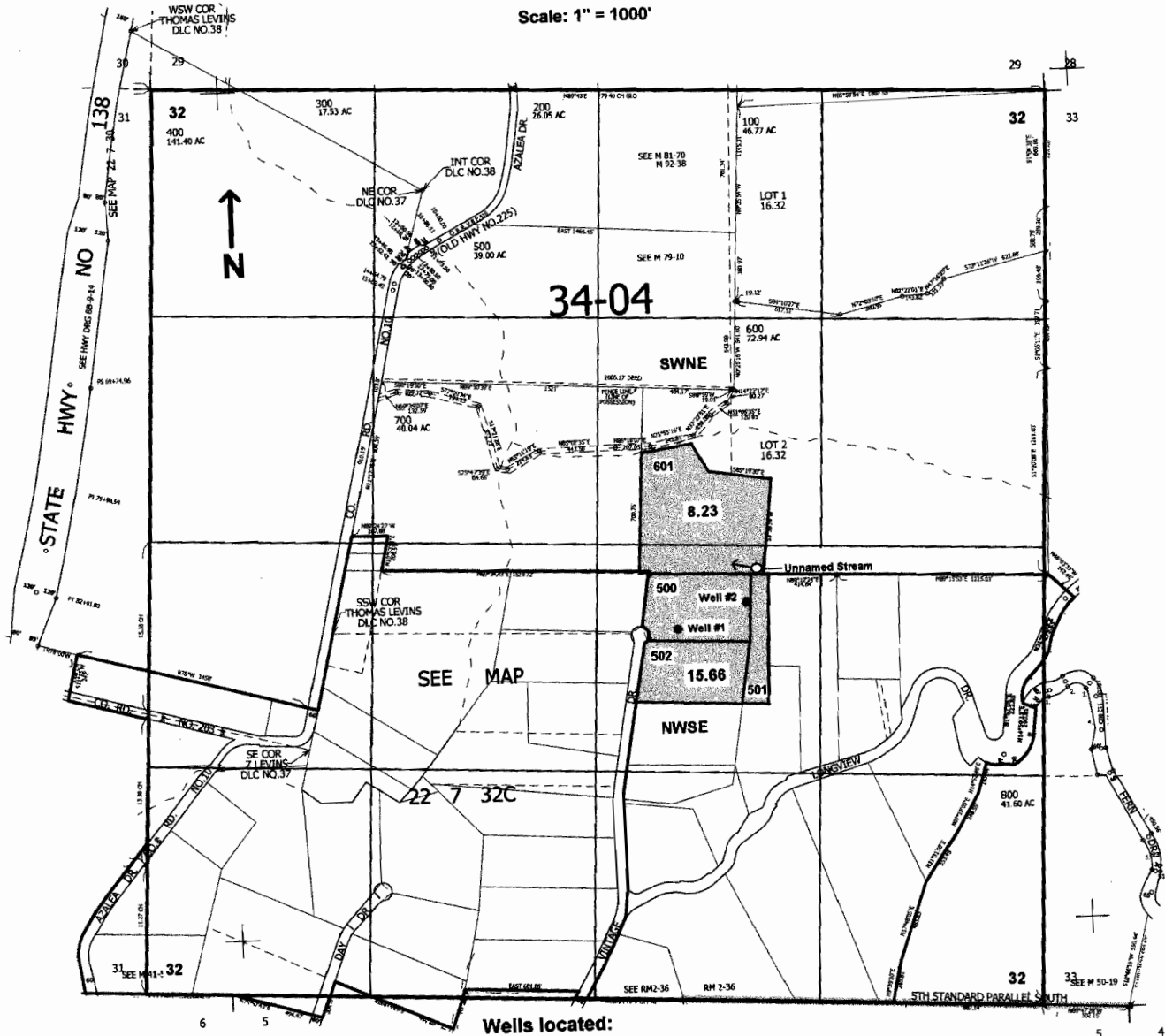


SEC.32 T.22S. R.7W. W.M.  
DOUGLAS COUNTY

Scale: 1" = 1000'



Wells located:

- #1- 500 ft. S. and 480 ft. E. } from the center of Sec. 32
- #2 - 330 ft. S. and 900 ft. E. }

**RECEIVED**

OCT 04 2005

WATER RESOURCES DEPT  
SALEM, OREGON

Appl. D-16547