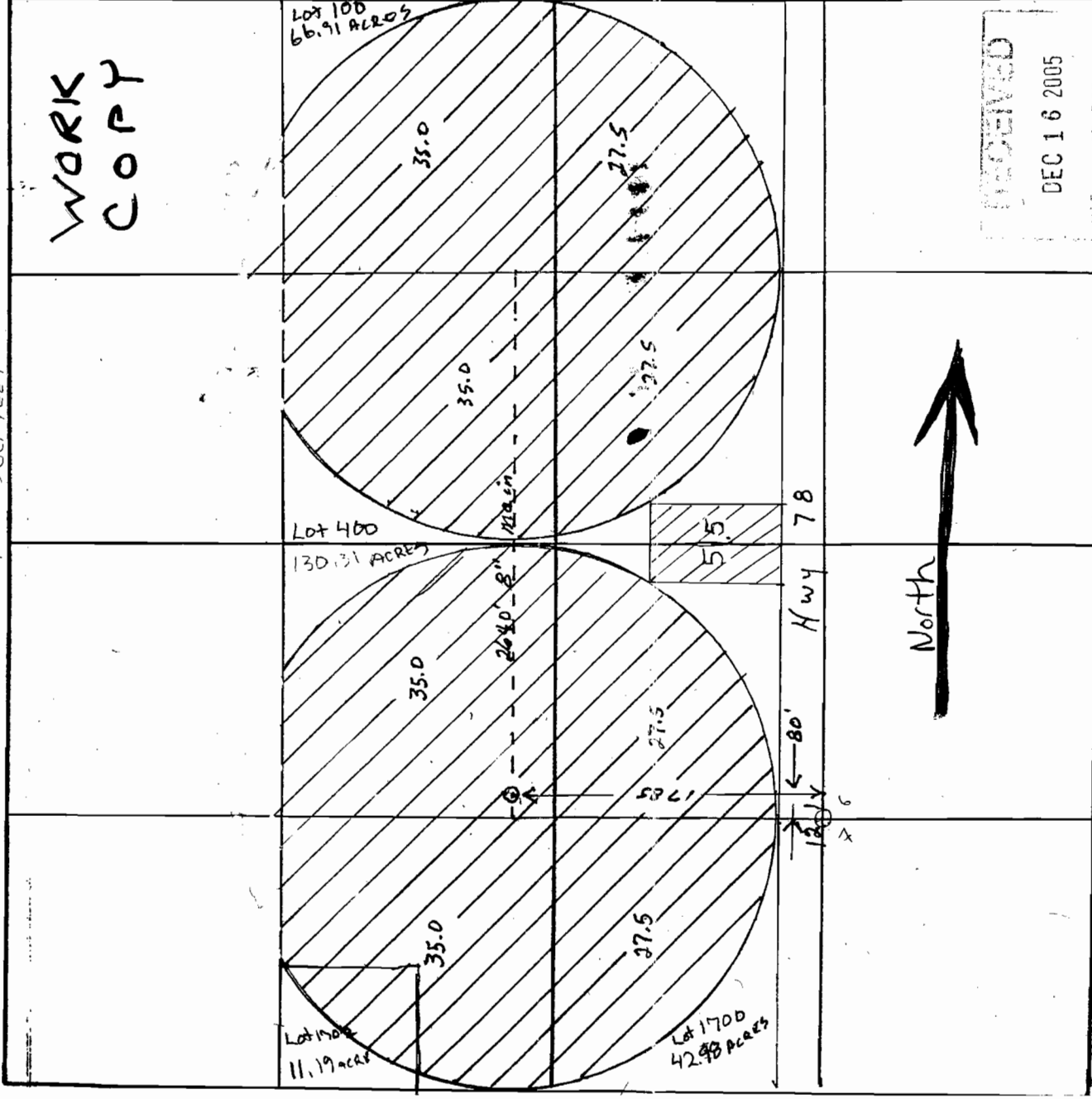


SECTION PLAT

Section 12-1 Township 26-S Range 33-E

County of Harney State of OR
REVISED SCALE
1" = 500 FEET



appno G-116583

RECEIVED
MAY 30 2006
WATER RESOURCES DEPT
SALEM, OREGON

RECEIVED
JUN 28 2006
WATER RESOURCES DEPT
SALEM, OREGON