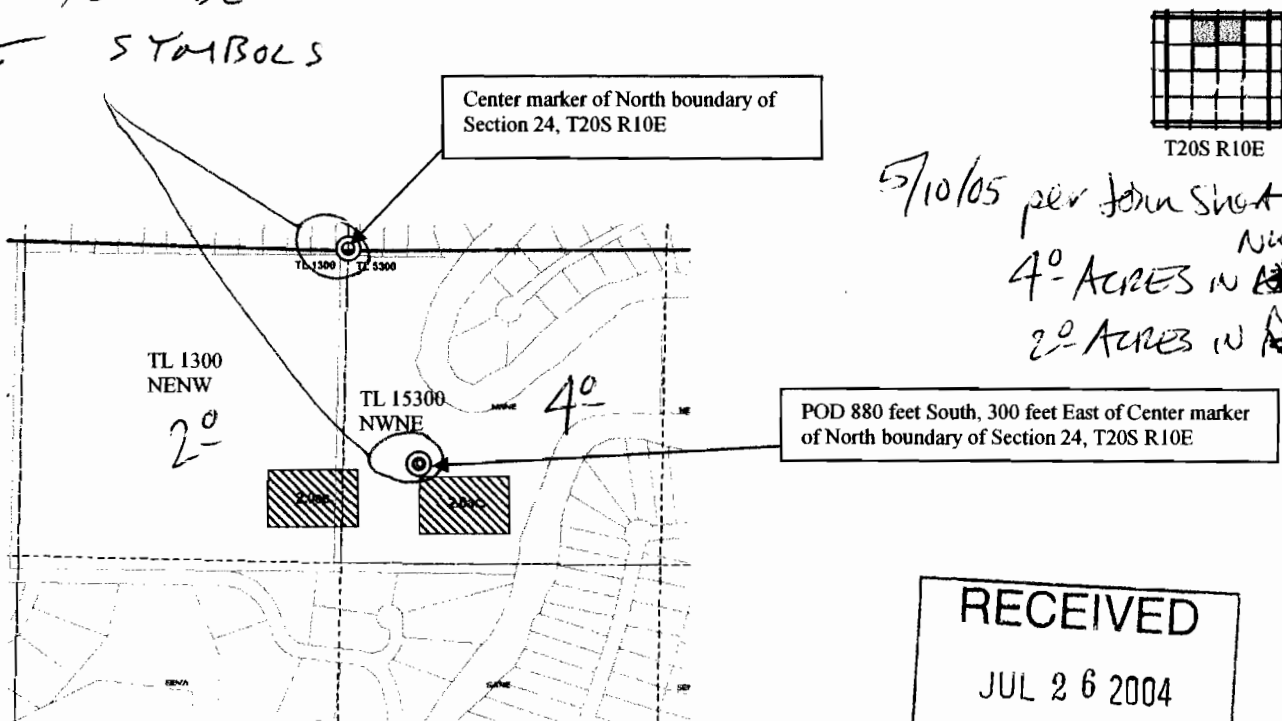


NEED TO BE
UNIQUE SYMBOLS



5/10/05 per John Short
 NWNE
 4⁰ ACRES IN ~~TL 1300~~
 2⁰ ACRES IN ~~TL 15300~~

RECEIVED
 JUL 26 2004
 WATER RESOURCES DEPT
 SALEM, OREGON

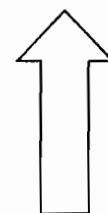
Application Map for Groundwater Permit
 For
 Clifford Brooks

Proposed Place of Use Approximate Well Location

T20S R10E Section 24, NE 1/4, NW 1/4, Tax Lot 1300 and
 NW 1/4, NE 1/4, Tax Lot 15300

1 inch equals 800 feet

July 23, 2004



NORTH

Deschutes Irrigation, LLC

P.O. Box 1830
 Bend, OR 97709
 541-322-9528
 shortsales@usa.com

app no. G 16284

ALL TOTAL OF ACRES
 LISTED BY 1/4 1/4
 IS NOT EASY TO READ
 FOR ACRES
 SPLIT BY 1/4 1/4
 HOW ACCURATE