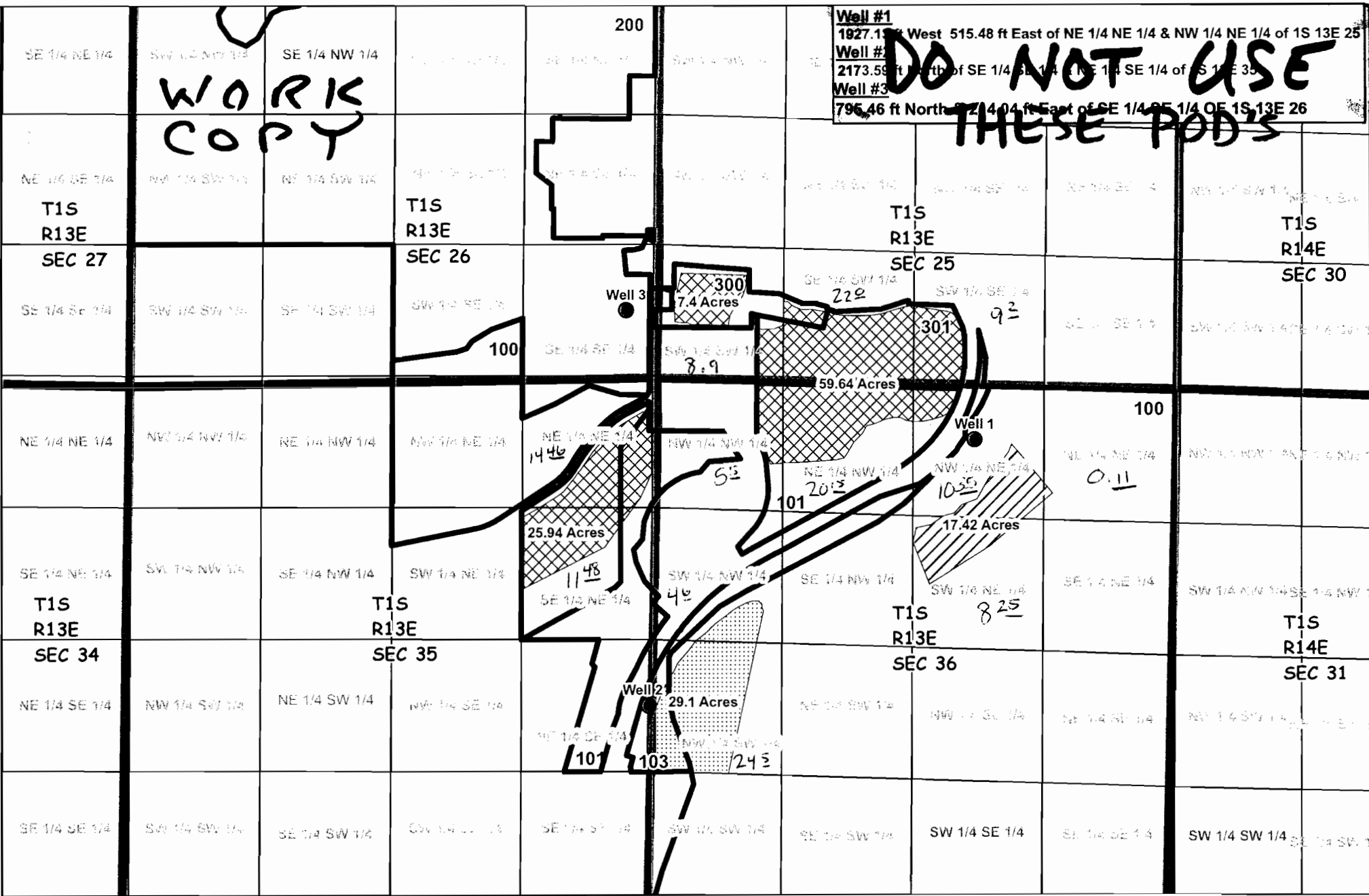


WORK COPY

Do NOT USE THESE POD'S

Well #1
1927.15 West 515.48 ft East of NE 1/4 NE 1/4 & NW 1/4 NE 1/4 of 1S 13E 25
Well #2
2173.59 ft North of SE 1/4 SW 1/4 & NE 1/4 SE 1/4 of 1S 13E 35
Well #3
795.46 ft North & 214.04 ft East of SE 1/4 SE 1/4 OF 1S 13E 26



Legend

Taxlots	Well #1	Well Location
Qtr Sections	Well #2	
Sections	Well #3	

RECEIVED
MAY 23 2005
WATER RESOURCES DEPT
SALEM, OREGON

1 inch equals 1,320 feet

This product is for informational purposes and may not have been prepared for, or be suitable for legal, engineering, or surveying purposes. Users of this information should review or consult the primary data and information sources to ascertain the usability of the information.

APP No G-16470 Permit No