

Sec. 24 T6N.R.34E.W.M.  
UMATILLA COUNTY  
1"=400'

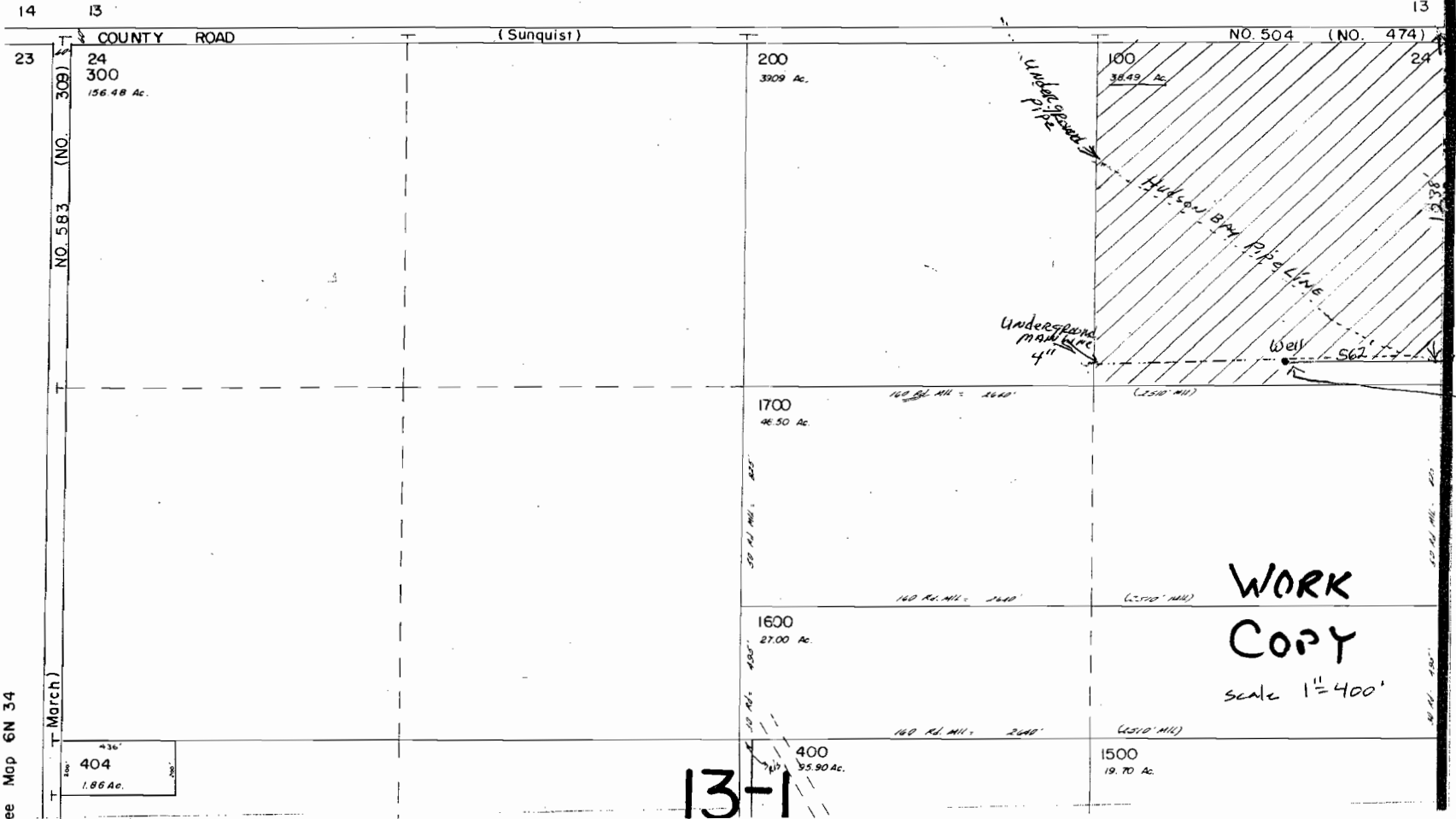
FEB 08 2006  
WATER RESOURCES DEPT  
SALEM, OREGON

6N 34 24  
TAX Lot - 100



Aerial Photo No. NZ-6P-22

See Map 6N 34



Section  
MARKER  
Well is Located 1238's And  
562' W of the NE Corner of  
6N-34 - Section 24 TAX Lot 100

WORK  
COPY  
scale 1"=400'

13-1

See Map 6N 34

Appno G-16623

Map 6N 35 19