

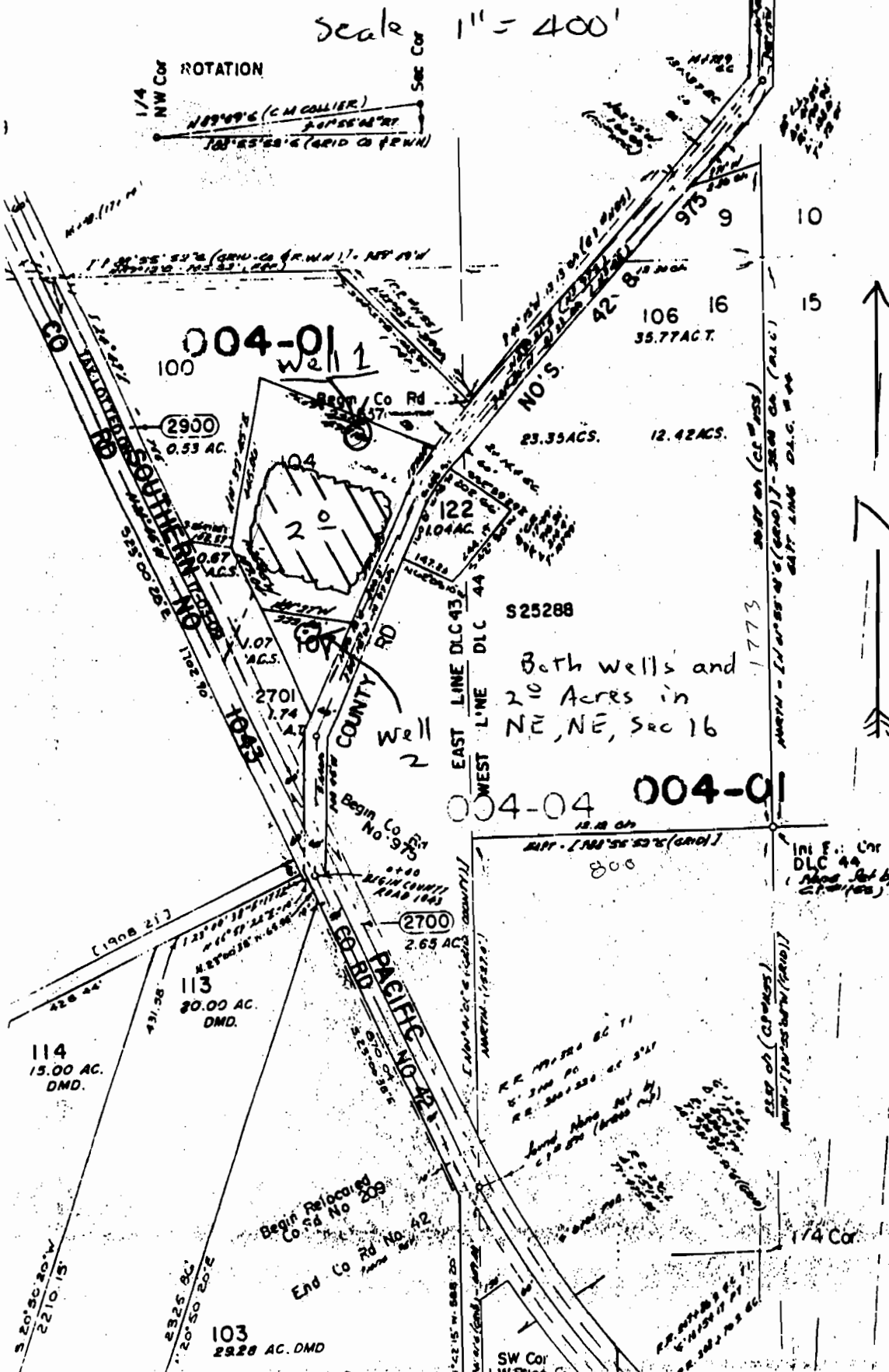
T 17 S R 3 W Sec 16

3 W.W.M.

This map is made solely for the purpose of assisting in locating the premises herein described. Western Pioneer Title of Lane County assumes no liability for variations, if any, in dimensions and locations ascertainable by actual survey.

17 03 16
& INDEX

Scale 1" = 400'



CANCELLED

112
119
110
108

TL 1402	100' 31" S	56' 27" 100' W
TL 1601	6' 27" 40' W	41' 1'
	7' 27" 40' W	40' 7"
	8' 27" 40' W	39' 2"
	9' 27" 40' W	38' 6"
	10' 27" 40' W	37' 0"
	11' 27" 40' W	35' 4"
	12' 27" 40' W	34' 0"
	13' 27" 40' W	32' 4"
	14' 27" 40' W	30' 8"
	15' 27" 40' W	29' 2"
	16' 27" 40' W	27' 6"
	17' 27" 40' W	26' 0"
	18' 27" 40' W	24' 4"
TL 120	18' 27" 40' W	22' 8"
	19' 27" 40' W	21' 2"
	20' 27" 40' W	19' 6"
	21' 27" 40' W	18' 0"
	22' 27" 40' W	16' 4"
	23' 27" 40' W	14' 8"
	24' 27" 40' W	13' 2"
	25' 27" 40' W	11' 6"
	26' 27" 40' W	10' 0"

Both wells and
20 Acres in
NE, NE, Sec 16

PACIFIC HIGHWAY NO. 1-5
4301 S
1090' W
Well 2
960' S
1240' W
of NE Cor
Sec 16

RECEIVED
JAN 13 1906
WATER RESOURCES DEPT
SALEM, OREGON

app no G-16598