

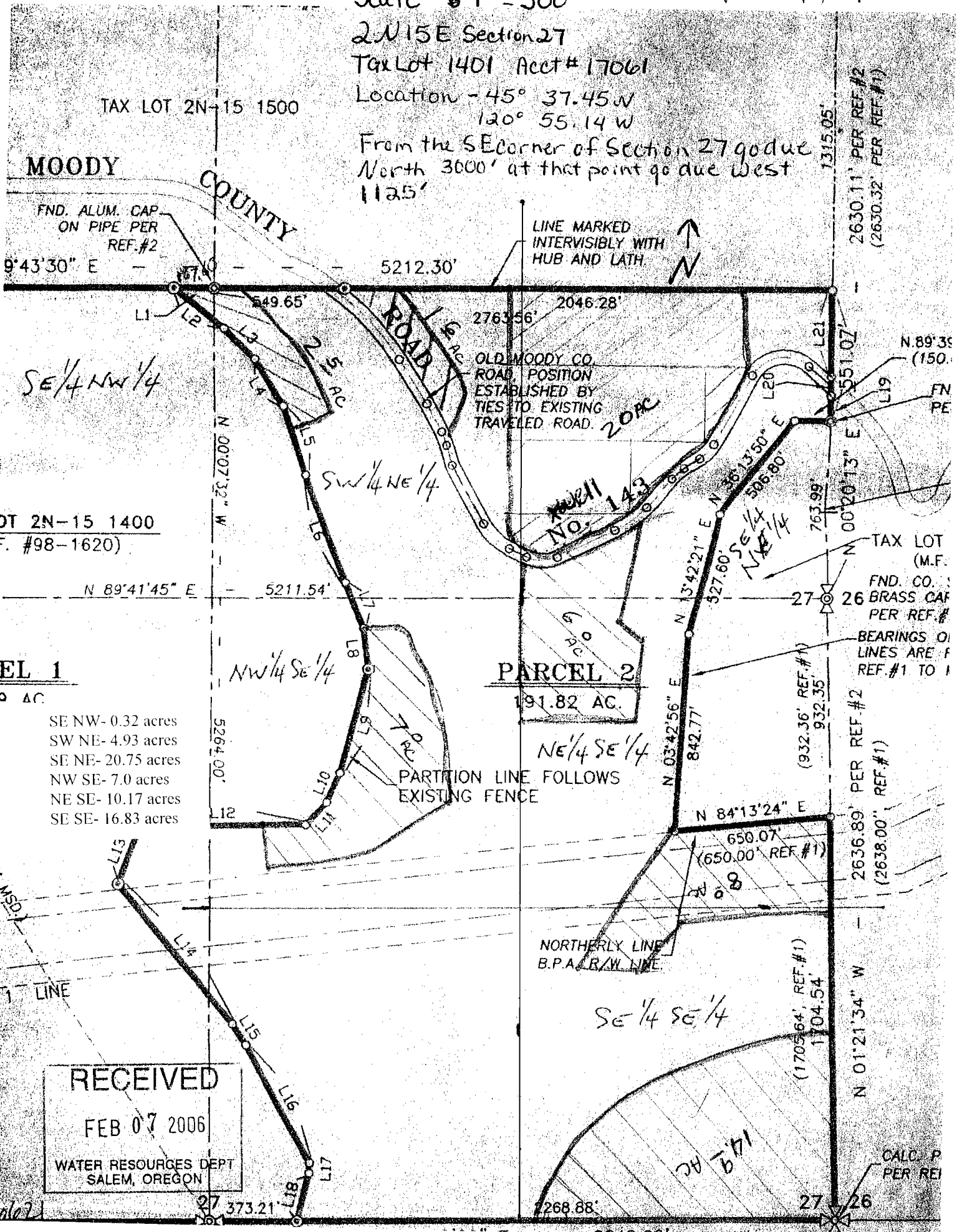
John E Williams
Laurie A. Williams

TOTAL GCHERES
WWT COPY #1

Scale 1" = 500

2N15E Section 27
Tax Lot 1401 Acct # 17061

Location - 45° 37.45' N
120° 55.14' W
From the SE corner of Section 27 go due
North 3000' at that point go due West
1125'



TAX LOT 2N-15 1500

MOODY COUNTY

FND. ALUM. CAP
ON PIPE PER
REF.#2

9°43'30" E

5212.30'

LINE MARKED
INTERVISIBLY WITH
HUB AND LATH



L1

549.65'

2763.56'

2046.28'

1315.05'

2630.11' PER REF.#2
(2630.32' PER REF.#1)

SE 1/4 NW 1/4

ROAD NO. 143

OLD MOODY CO.
ROAD POSITION
ESTABLISHED BY
TIES TO EXISTING
TRAVELED ROAD.

N.89°35'
(150.0)

N 00°07'32" W

SW 1/4 NE 1/4

ROAD NO. 20 RC

L21

00°20'13" E

551.07'

TAX LOT
(M.F.)

FND. CO. 26
BRASS CAP
PER REF.#

BEARINGS OF
LINES ARE FROM
REF.#1 TO 1

DT 2N-15 1400
F. #98-1620)

N 89°41'45" E

5211.54'

EL 1

o AC.

- SE NW- 0.32 acres
- SW NE- 4.93 acres
- SE NE- 20.75 acres
- NW SE- 7.0 acres
- NE SE- 10.17 acres
- SE SE- 16.83 acres

NW 1/4 SE 1/4

PARCEL 2
191.82 AC.

NE 1/4 SE 1/4

PARTITION LINE FOLLOWS
EXISTING FENCE

N 03°42'56" E

842.77'

(932.36' REF.# N
932.35')

2636.89' PER REF.#2
(2638.00" REF.#1)

N 84°13'24" E

650.07'
(650.00" REF.#1)

NORTHERLY LINE
B.P.A. R/W NINE

SE 1/4 SE 1/4

(1705.64' REF.#1
1704.54')

N 01°21'34" W

1704.54'

CALC. P
PER REI

RECEIVED

FEB 07 2006

WATER RESOURCES DEPT
SALEM, OREGON

27 373.21'

1268.88'

27 26