

RECEIVED

MAY 17 2006

WATER RESOURCES DEPT  
SALEM, OREGON

DASHED LINES  
INDICATE IRRIGATED  
ACREAGE.

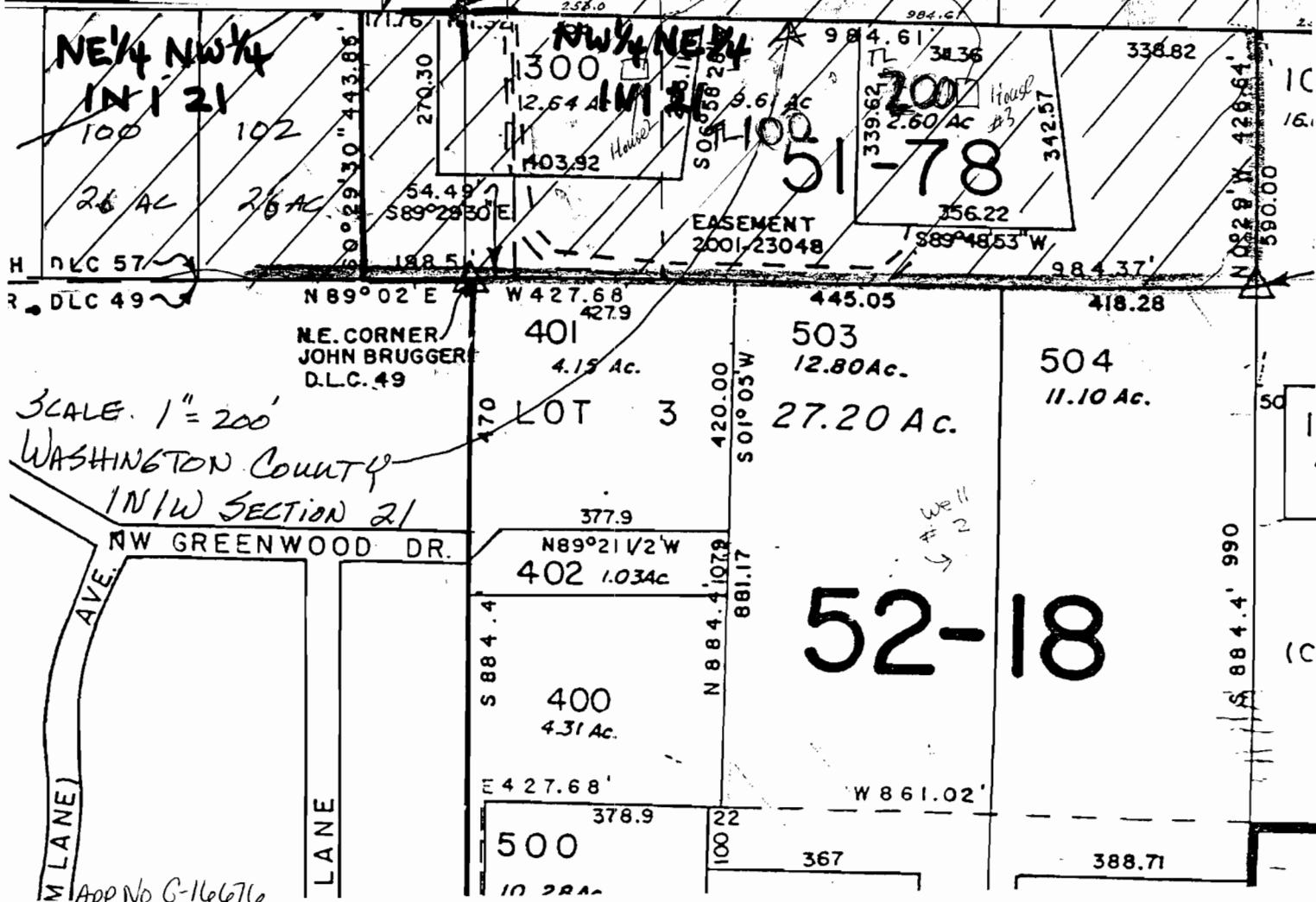
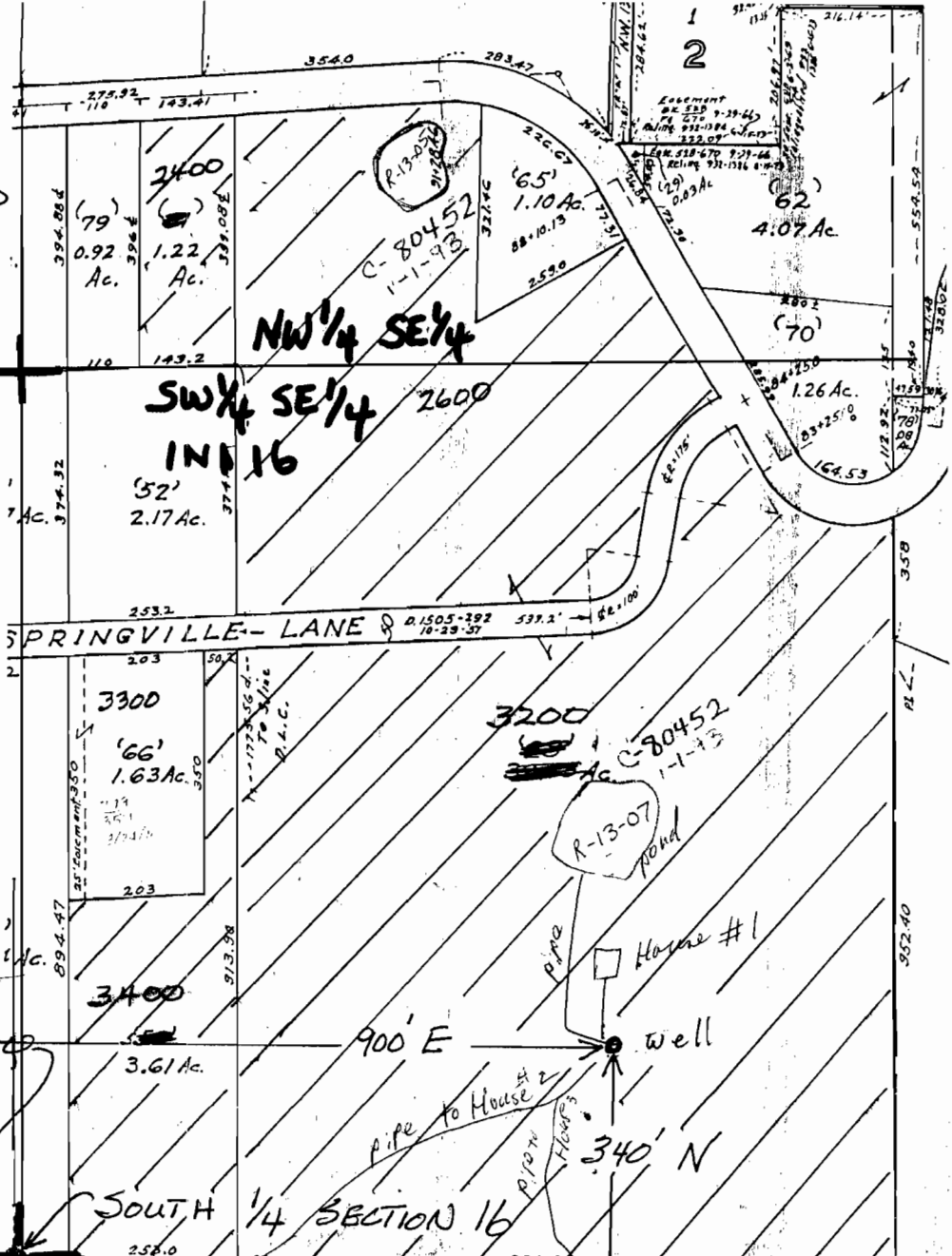
RECEIVED

MAY 24 2006

WATER RESOURCES DEPT  
SALEM, OREGON



MULTNOMAH COUNTY  
1N1W SECTION 16  
SCALE 1" = 200'



52-18

App No G-16676