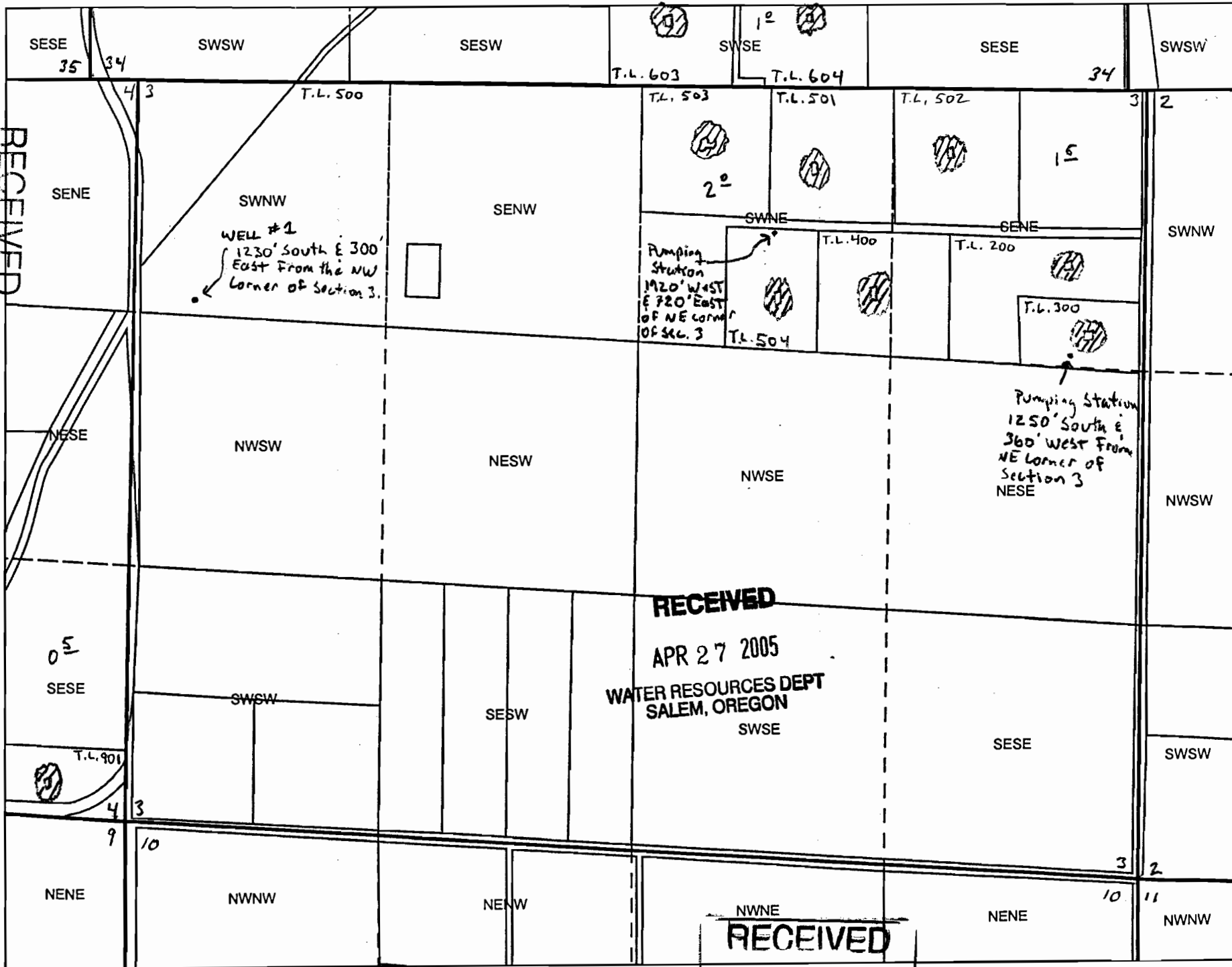


WATER RESOURCES DEPT.
SALEM, OREGON

JUN 13 2005

RECEIVED



RECEIVED
APR 27 2005
WATER RESOURCES DEPT
SALEM, OREGON
SWSE

NWNE
RECEIVED
APR 15 2005
WATER RESOURCES DEPT
SALEM, OREGON

1 inch equals 660 feet
0 170 340 680 1,020 1,360 Feet



G-16483

⊗ = Place of use

16S 14E Sec3