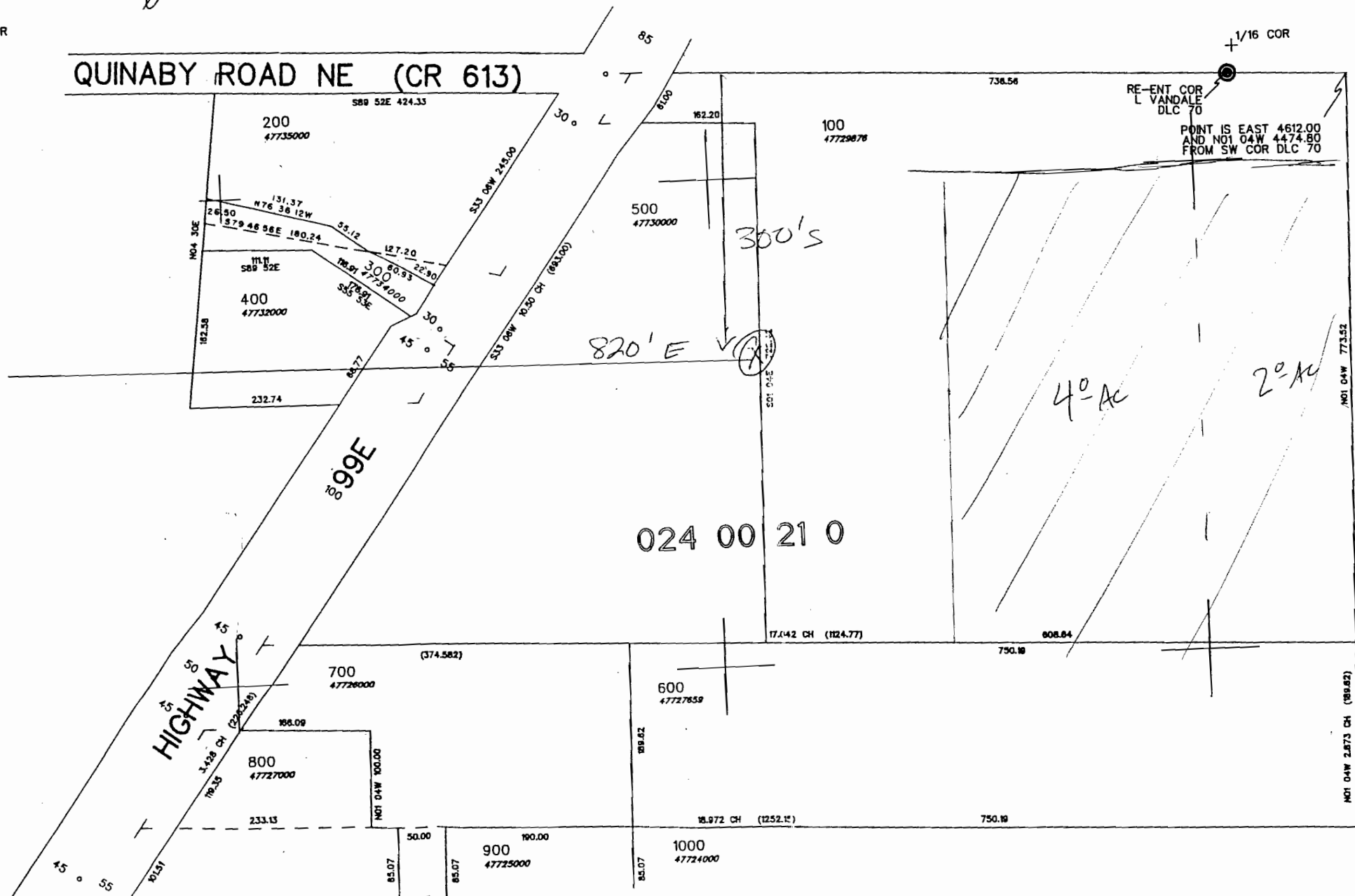


NW1/4 SW1/4 SEC.20 TWP.6S. RGE.2W. WM  
MARION COUNTY, OREGON

CANCELLED NUMBERS  
201  
301

SEE MAP 6 2W 20

W  
1/4 COR



024 00 21 0



1"=100'  
31-MAR-92

RECEIVED

AUG 11 2006

WATER RESOURCES DEPT  
SALEM OREGON

SEE MAP 6 2W 20

appno G-10767