

WORK COPY (CAR)



Scale = 1" = 400'

MAP

T. 6N., R. 35E., Sec. 22 (SENE)

T. 6N., R. 35E., Sec. 22 (D) NENE

See Map 6N 35 22B

Well Location:

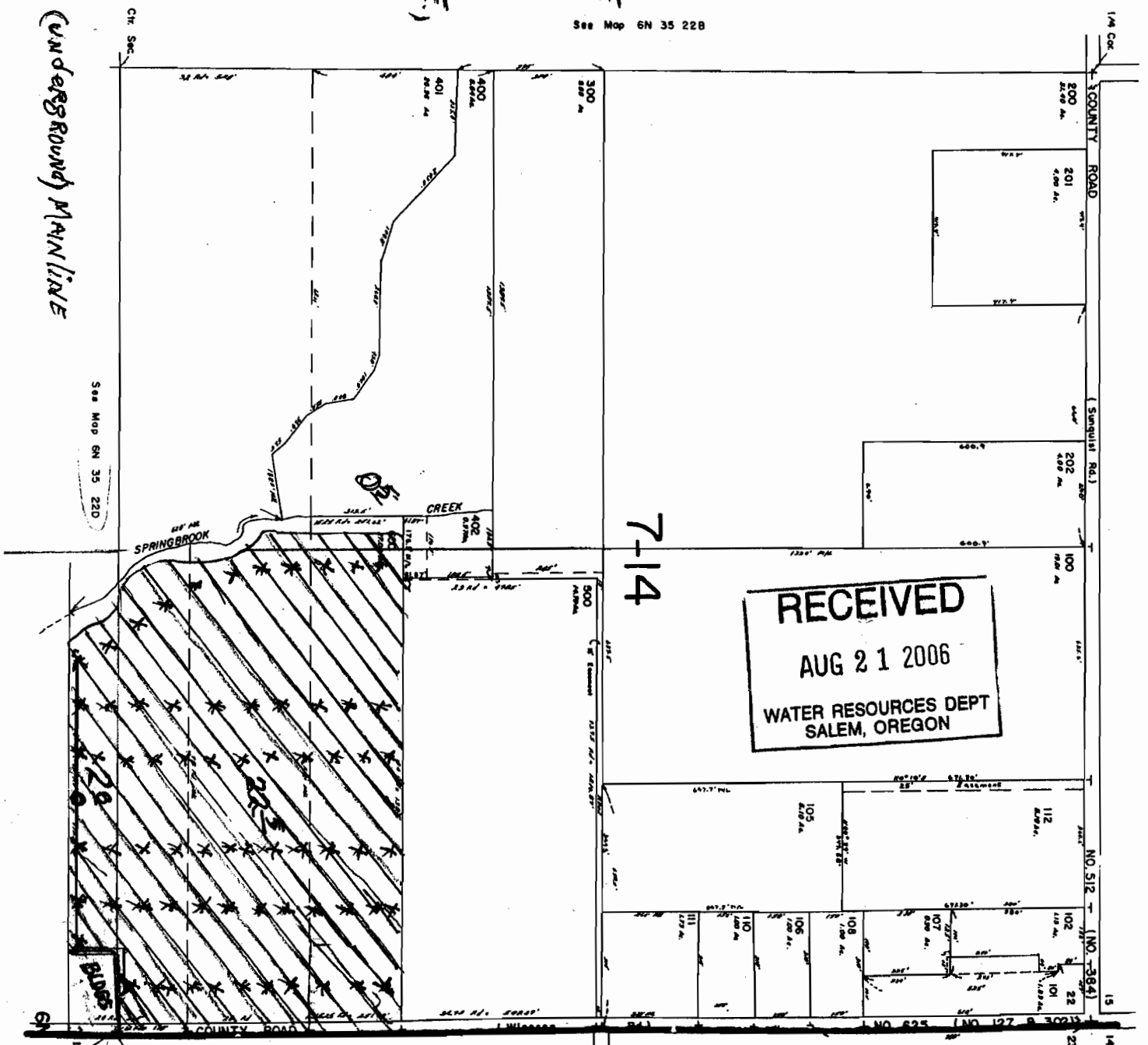
129' So. & 640' W. from the E 1/4 Cor. of T. 6N., R. 35E., Sec. 22 NENE, T1 600 Umatilla County, Basin 7.

Key: POA 0

25.8 ac Supl. Pipelines Riser Handlines

(Underground) Mainline

app no G-16711



RECEIVED
AUG 21 2006
WATER RESOURCES DEPT
SALEM, OREGON

CANCELLED
TL 03
100
700
301

See Map 6N 35 23B

6N 35 22A