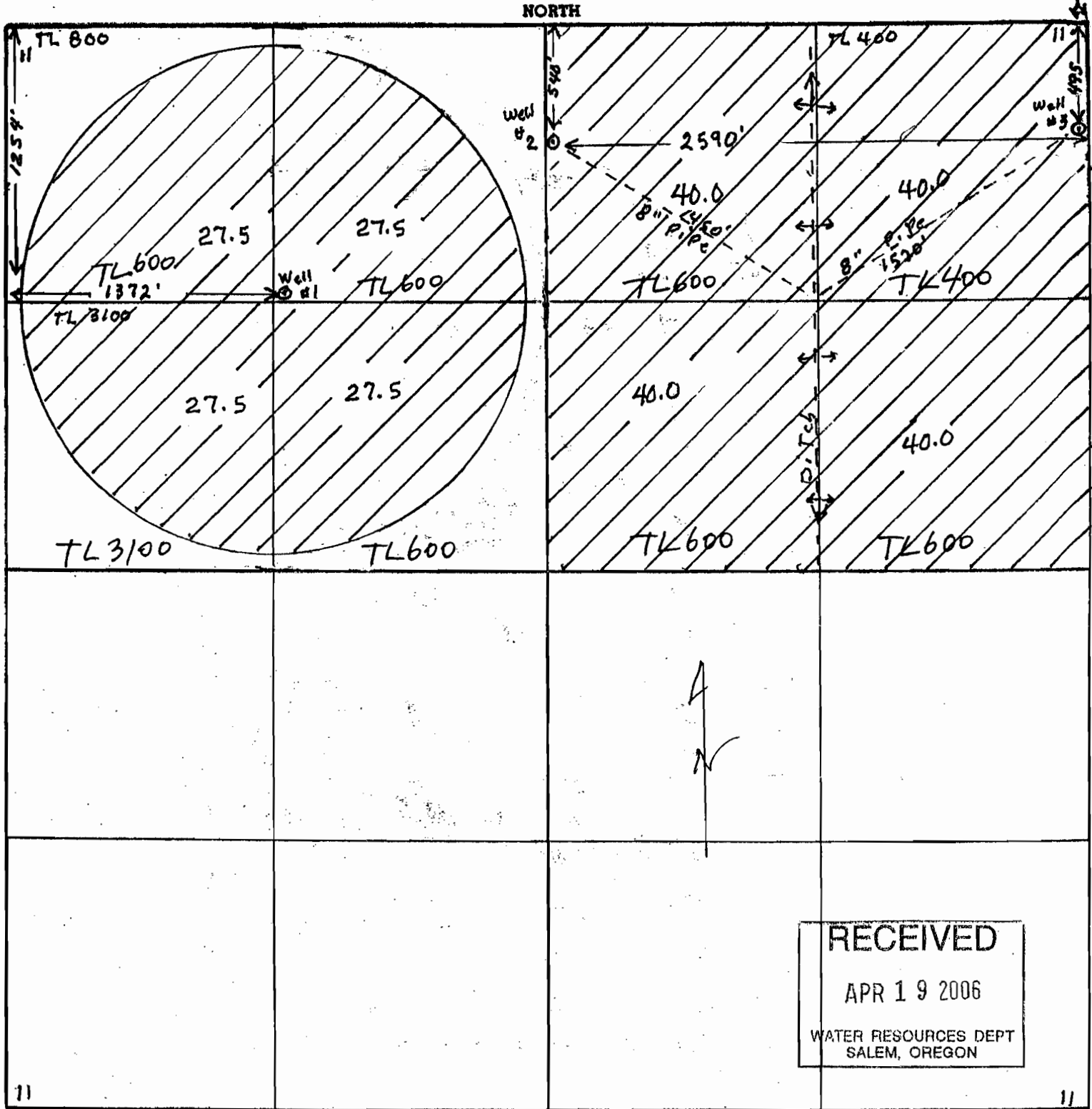


Section 11 Township 26-S Range 30-E

County of Harney State of OR



RECEIVED
 APR 19 2006
 WATER RESOURCES DEPT
 SALEM, OREGON

Remarks scale - 8" = 1 mile - 660) -

RECEIVED
 MAY 12 2006
 WATER RESOURCES DEPT
 SALEM, OREGON

RECEIVED
 DEC 18 2006
 WATER RESOURCES DEPT
 SALEM, OREGON

SECTION FLA1

WORK COPY

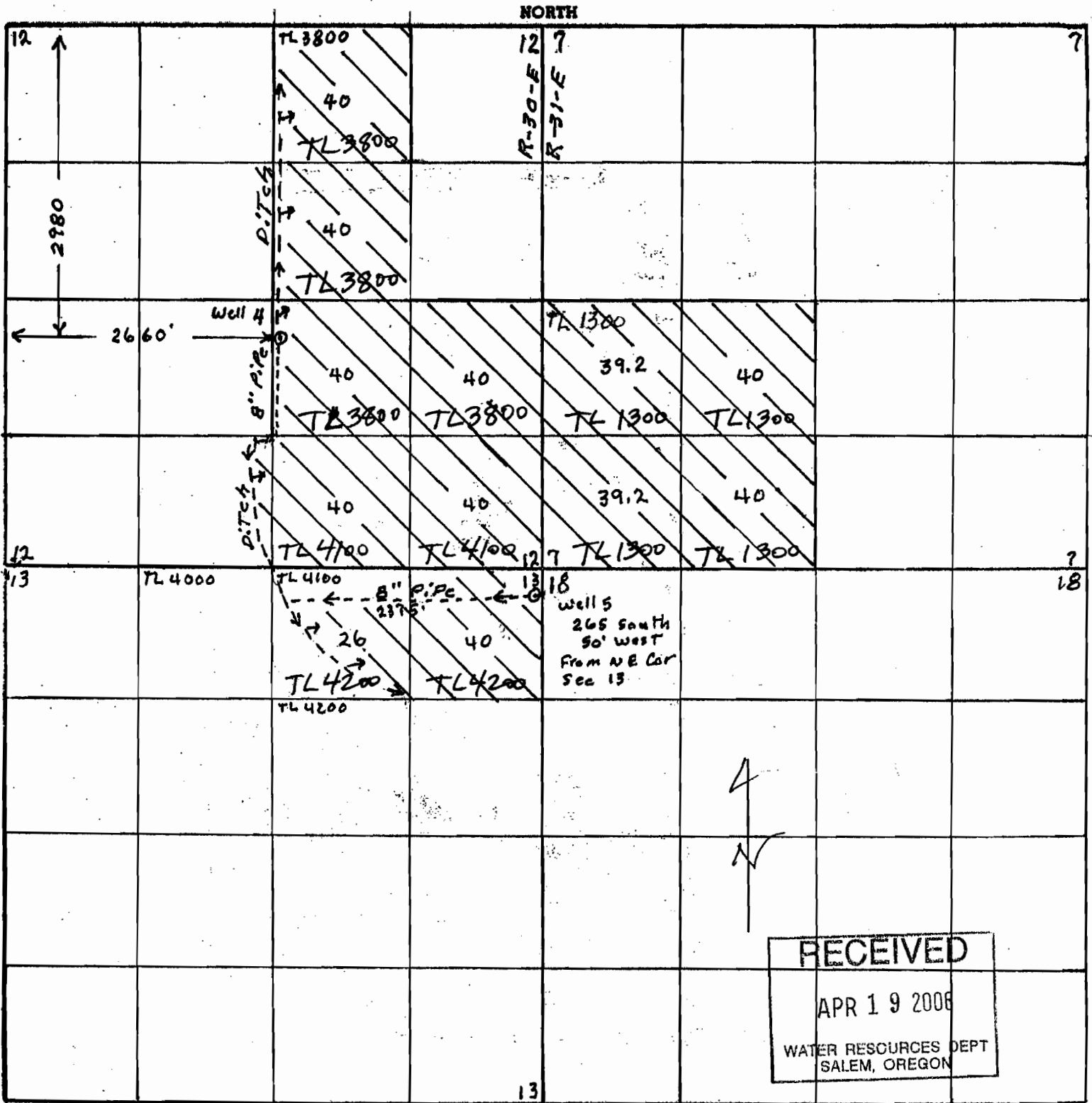
Section 12-13-7

Township 26-5

Range 30 & 31 E

County of Harney

State of OR



RECEIVED
 APR 19 2006
 WATER RESOURCES DEPT
 SALEM, OREGON

Remarks scale - 4" = 1 mile - 660' -

RECEIVED
 MAY 12 2006
 WATER RESOURCES DEPT
 SALEM, OREGON

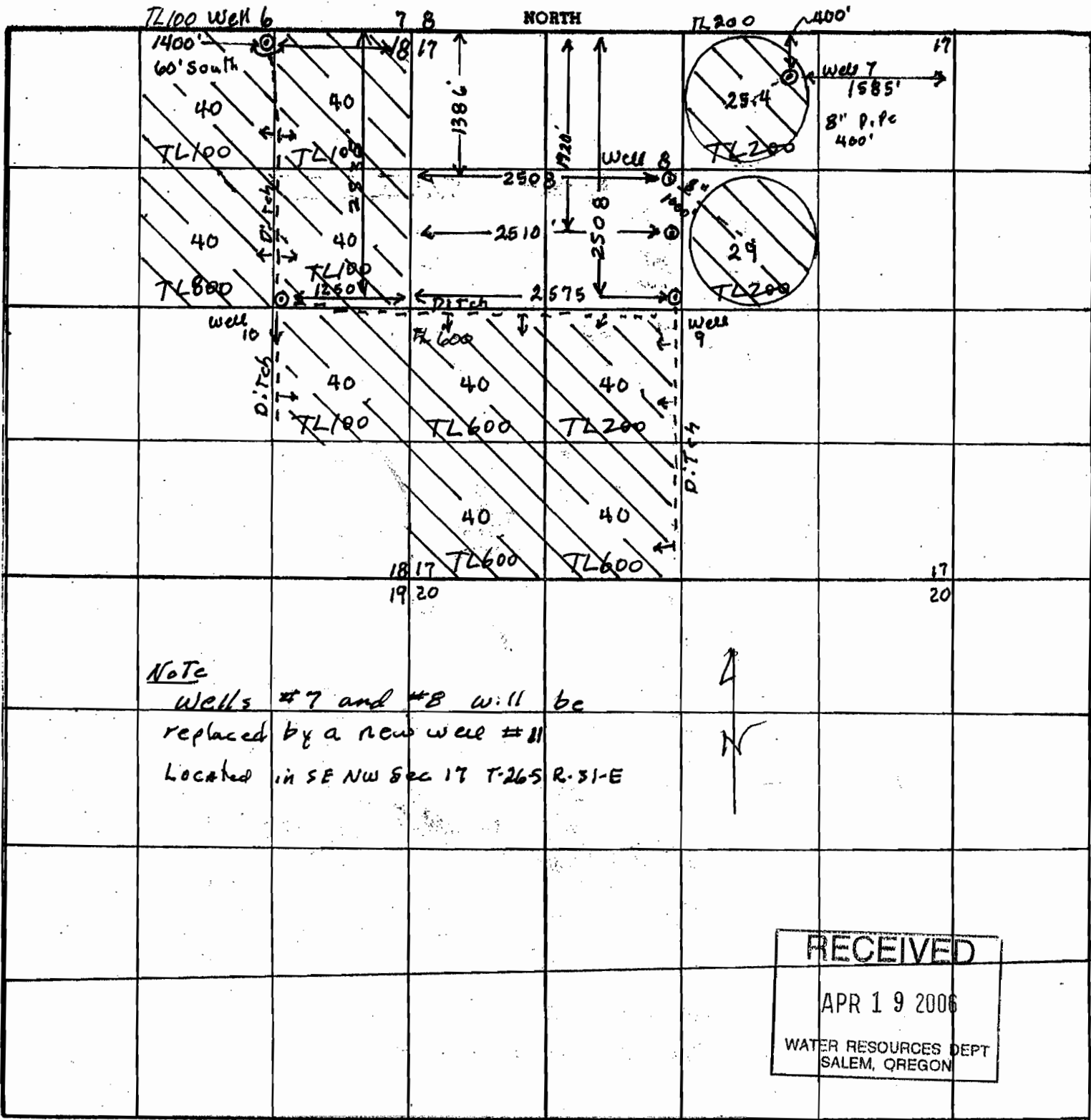
Section 17 & 18

Township 26-S

Range 31-E

County of Harney

State of OR



Note
 Wells #7 and #8 will be
 replaced by a new well #11
 Located in SE NW Sec 17 T-26S R-31-E

RECEIVED
 APR 19 2006
 WATER RESOURCES DEPT
 SALEM, OREGON

Remarks scale 4" = 1 mile (660')

RECEIVED

DEC 18 2006

WATER RESOURCES DEPT
 SALEM, OREGON

RECEIVED

MAY 12 2006

WATER RESOURCES DEPT
 SALEM, OREGON