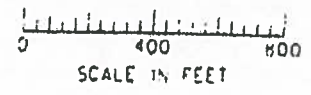


THIS MAP WAS PREPARED FOR ASSESSMENT PURPOSE ONLY

SECTION 27 T.15. R.25E. W.M. MORROW COUNTY 1" = 600'

IS 25 27 LEXINGTON

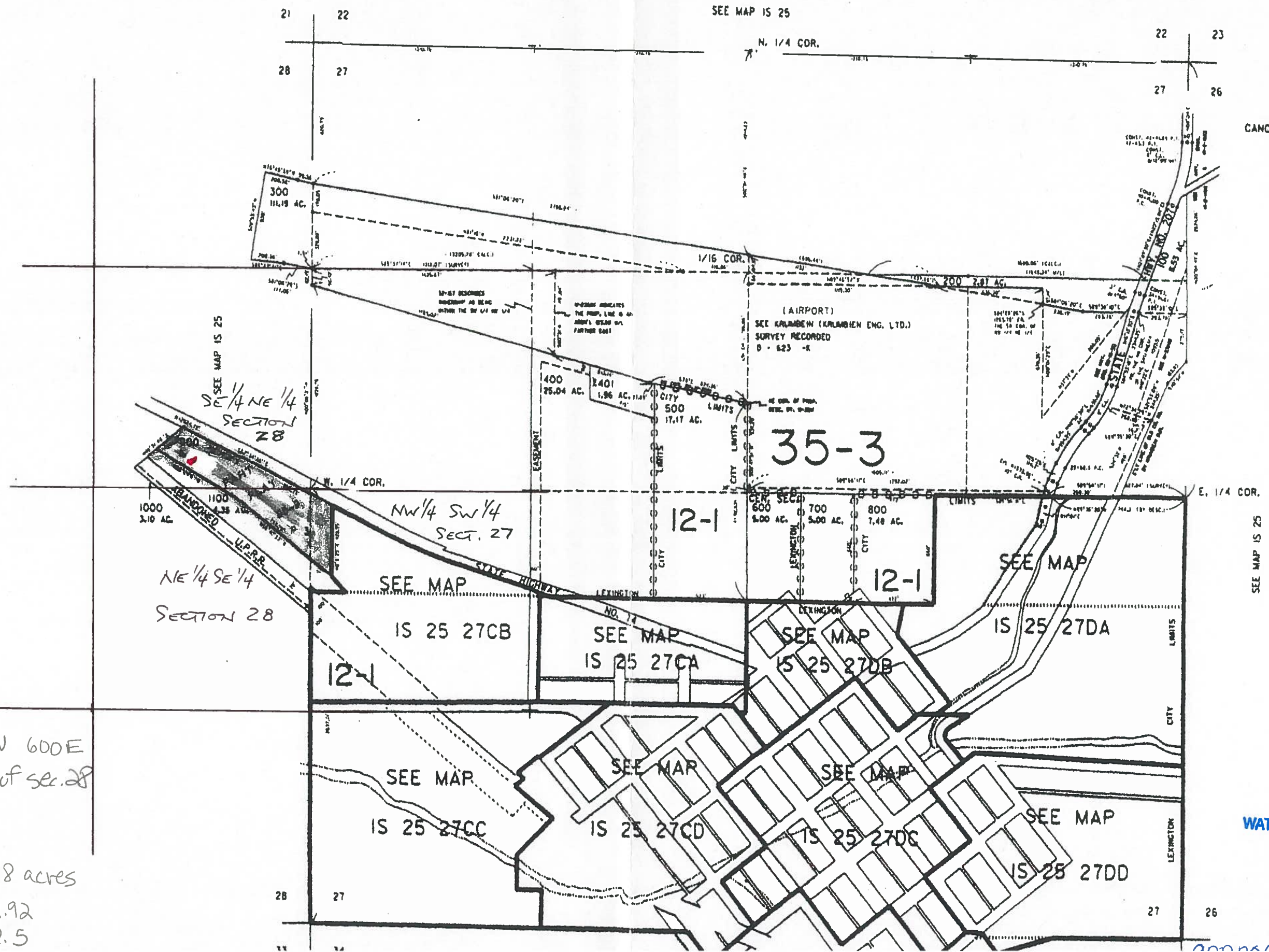


REVISED COLLECTED APPROX SCALE 1" = 600 FEET

● = well

Well is 150ft. N 600E from SW corner of sec. 28

W 1/2 SW 1/4 sec. 27 - 1.18 acres  
NE 1/4 SE 1/4 sec. 28 - 2.92  
SE 1/4 NE 1/4 sec. 28 - 2.5



RECEIVED NOV 28 2006

CANCELLED NO. 5 T.L. 1101

RECEIVED DEC 18 2006 WATER RESOURCES DEPT SALEM, OREGON

2006-11-11