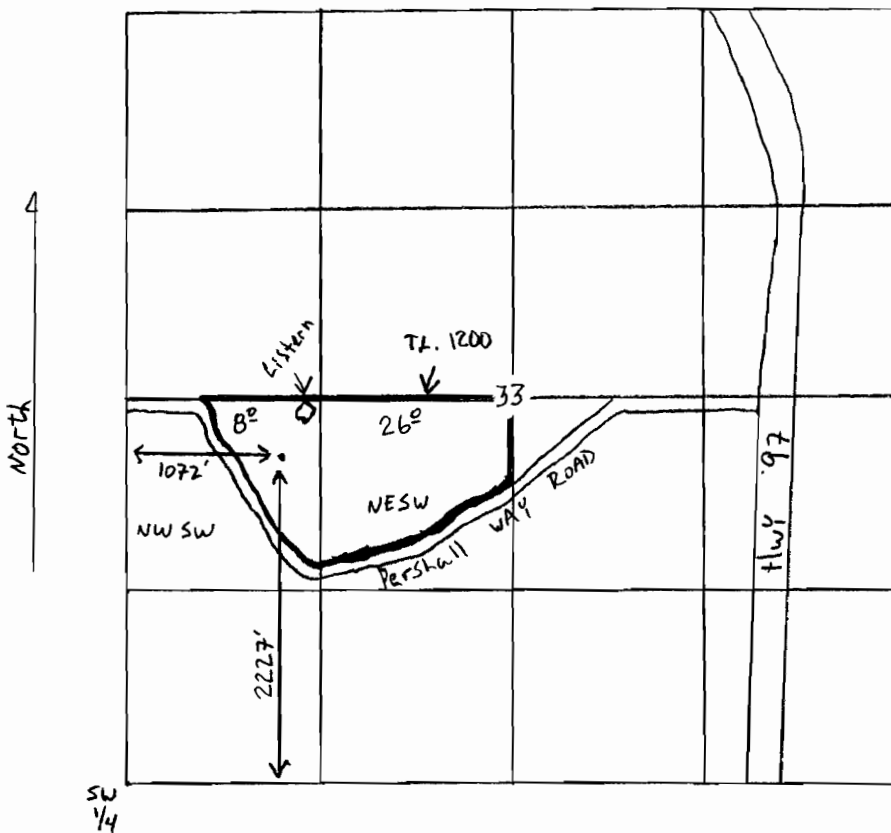


Groundwater Application For Jack  
Robinson & Sons.

Township 14 South Range 13 East Section 33, W.M.

POU. - 8° NWSW 26° NESW Industrial  
All within tax lot 1200



Scale 1" = 1320'

POD (well #1) - 1072' East and 2227' North of  
the SW 1/4 of Section 33, Township 14 South  
Range 13 East, Section 33, W.M.

Appl. G-16519

**RECEIVED**

AUG 22 2005

WATER RESOURCES DEPT  
SALEM, OREGON